

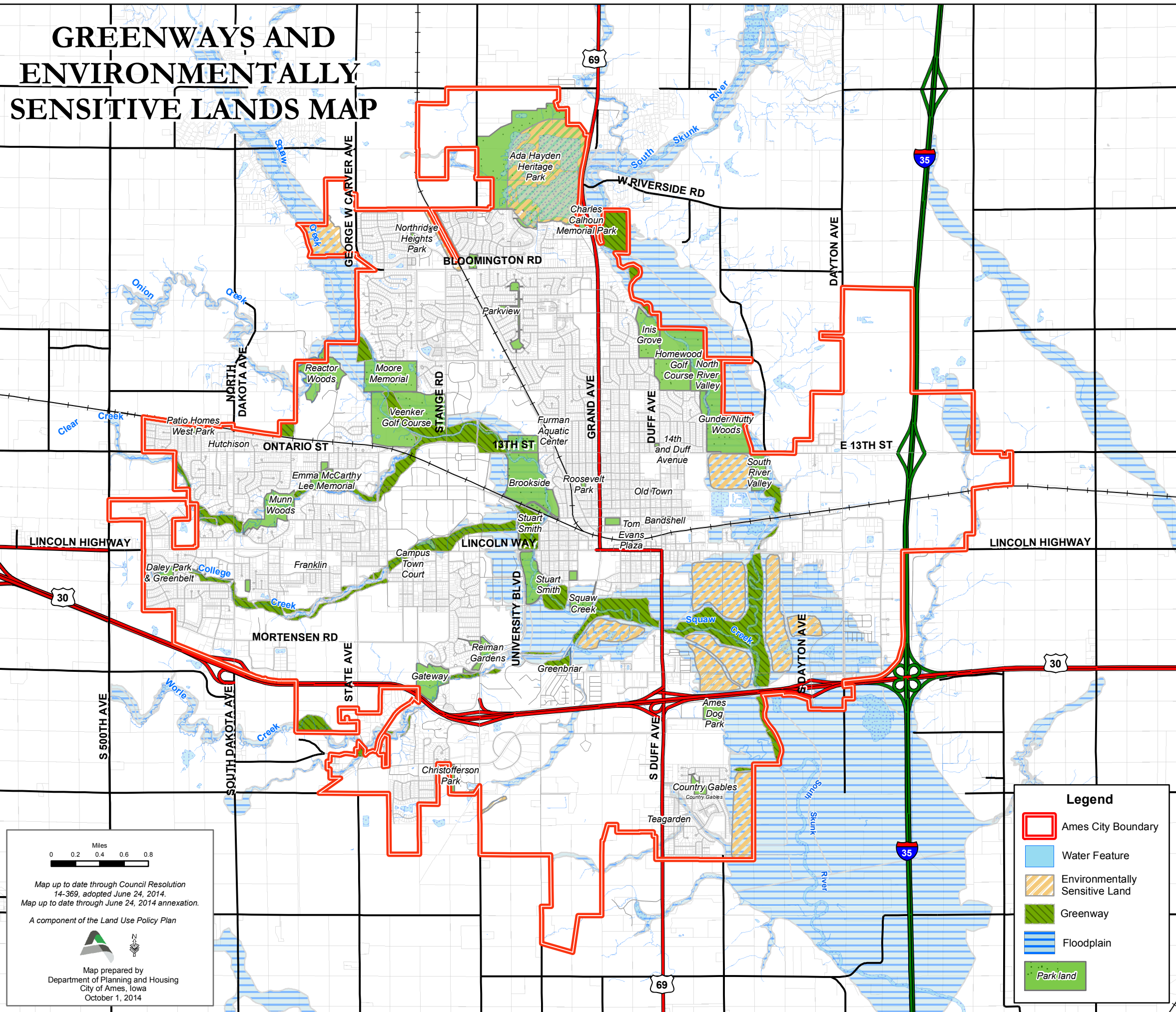
Summary Text from Land Use Policy Plan

**Greenway** - The designation involves streamways, plus parks and open space linkages to create a continuous "greenway" system through designated areas of the community (*Land Use Policy Plan, Chapter Two: Land Use p. 32*).

**Environmentally Sensitive Areas** - The designation involves flood prone areas, wetlands, water bodies and designated natural resources that should be protected from detrimental use. Included are areas previously identified as "Floodway" and "Floodplain"; plus selective natural resources from the "Natural Resources Inventory". Areas designated "Environmentally Sensitive Areas" may or may not be suitable for development. In the event that development is determined to be appropriate, special requirements may be necessary to ensure environmental compatibility (*Land Use Policy Plan, Chapter Two: Land Use p. 32*).


The Greenways and Environmentally Sensitive Lands Map identifies a greenway system that encompasses portions of environmentally sensitive areas. These stream-ways and natural resources are recommended for protection and use as passive recreational areas. Linking them together with the City's existing parks and open space creates a greenway system serving the entire community (*Land Use Policy Plan, Chapter Five: Parks, Recreation, and Open Space p. 98*).

**Natural Resource Recommendations** - The corridors that these resources occupy should provide a connected and continuous greenway. These corridors benefit existing wildlife by protecting their habitat, and they also offer a means of linking the community with a linear park system that would benefit all residents. These corridors can provide safe pedestrianways and bikeways that can increase the cohesion of





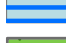



0 0.2 0.4 0.6 0.8  
 Miles

Map up to date through Council Resolution  
 14-369, adopted June 24, 2014.  
 Map up to date through June 24, 2014 annexation.  
 A component of the Land Use Policy Plan

  
 Map prepared by  
 Department of Planning and Housing  
 City of Ames, Iowa  
 October 1, 2014

**Legend**

-  Ames City Boundary
-  Water Feature
-  Environmentally Sensitive Land
-  Greenway
-  Floodplain
-  Parkland