



Figure 1. An 1882 photo showing the north side of Onondaga (Main) Street from the corner of Onondaga and Douglas Avenue. This photo shows Ames Drug Store on the corner was operated by S. O. Osborn. The next store to left, built in 1867 by D. and S. L. Lucas, was purchased in 1868 by D. A. Bigelow and H. C. Huntington. These men joined in partnership with George G. Tilden in 1869. Tilden became sole owner of that mercantile business in 1883. The next brick building to the left was built by Bigelow, Huntington, and Tilden in 1873 as they expanded their clothing business. (Farwell T. Brown Photo Archive 5.23A.4)

NORTH SIDE ONONDAGA STREET, AMES, IOWA.



Figure 2. Showing the north side of Onondaga Street sometime before 1910. The Odd Fellows Building is the tall building on the very left. The Tilden Block buildings in right-center were built in 1883. (Farwell T. Brown Photographic Library 10.42.1-2)



Figure 3. One of the earliest photographs of Ames' Main Street (Onondaga) taken in 1875 (Farwell T. Brown Photographic Archive 91A.492.1-2)



Figure 4. An 1897 photograph showing the typical wood-frame buildings which were present at the east end of Onondaga Street. Soon after, this style of building was replaced with the brick standard that remains prominent throughout the district. (Farwell T. Brown Photographic Archive #8.33.4)



Figure 6. This 1900 photo shows the northeast corner of Onondaga Street (now Main) and Kellogg Avenue. The corner (far left) building was built in 1891 by Professor J. L. Budd and Judge John L. Stevens. The Opera House occupied the entire second floor of this building with a capacity for 600. Grove and Zenor Grocery Store (afterwards, Grove Bros., then J.J. Grove) occupied the west half of the first floor until 1916. J. B. Elliott's furniture store first occupied the east half. The building was divided in 1903 when sold to J. E. Davis and A. L. Potter. A firewall was then built through the second floor making this into two buildings. The A. L. Potter Hardware Store can be seen in this photo, occupying the east half of the building. (Farwell T. Brown Photo Archive 10.41.1)



Figure 7. A panoramic view of the intersection of Main Street and Douglas Avenue (Library of Congress 2007660925 <https://www.loc.gov/item/2007660925/>)



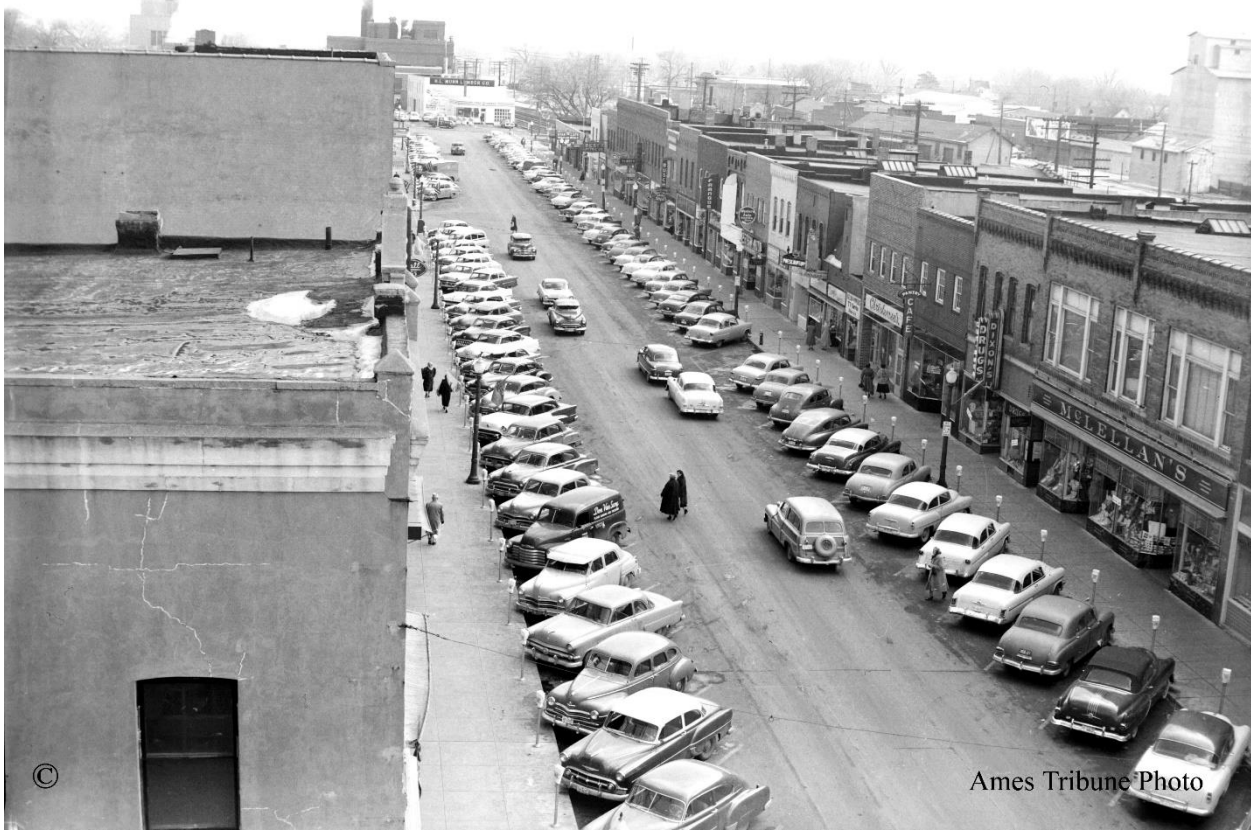


Figure 8. Circa 1900 photo of the Dinkey at the downtown terminal. (Farwell T. Brown Photo Archive 29.145A.2)



Figure 9. A 1939 Photo of Main Street looking east. The Sheldon-Munn Hotel is on the left at northwest corner of Main and Kellogg; the Rainbow Coffee Shop is at the northeast corner. On the southeast corner is the Ames Trust and Savings Bank. The streetcar tracks had been bricked over sometime after 1929 as seen in this picture. (Farwell T. Brown Photo Archive, 128.703.2-6)





Ames Tribune Photo

Figure 10: Ames Main Street in 1958 looking east from the intersection of Kellogg and Main. Shows facades of Main Street buildings on the south side. (*Ames Tribune Photo Archive*)



Figure 11. Postcard picture of the Sheldon Munn taken between 1917 and 1919, from Farwell Brown's "Postcards of Ames, Iowa, and Environs" collection (Farwell T. Brown Photographic Archive 79.413.3-5)

Municipal Bldg., Ames, Iowa.



Figure 12. Postcard photo of the Municipal Building taken shortly after its completion (Farwell T. Brown Photographic Archive 63.319.1-2)

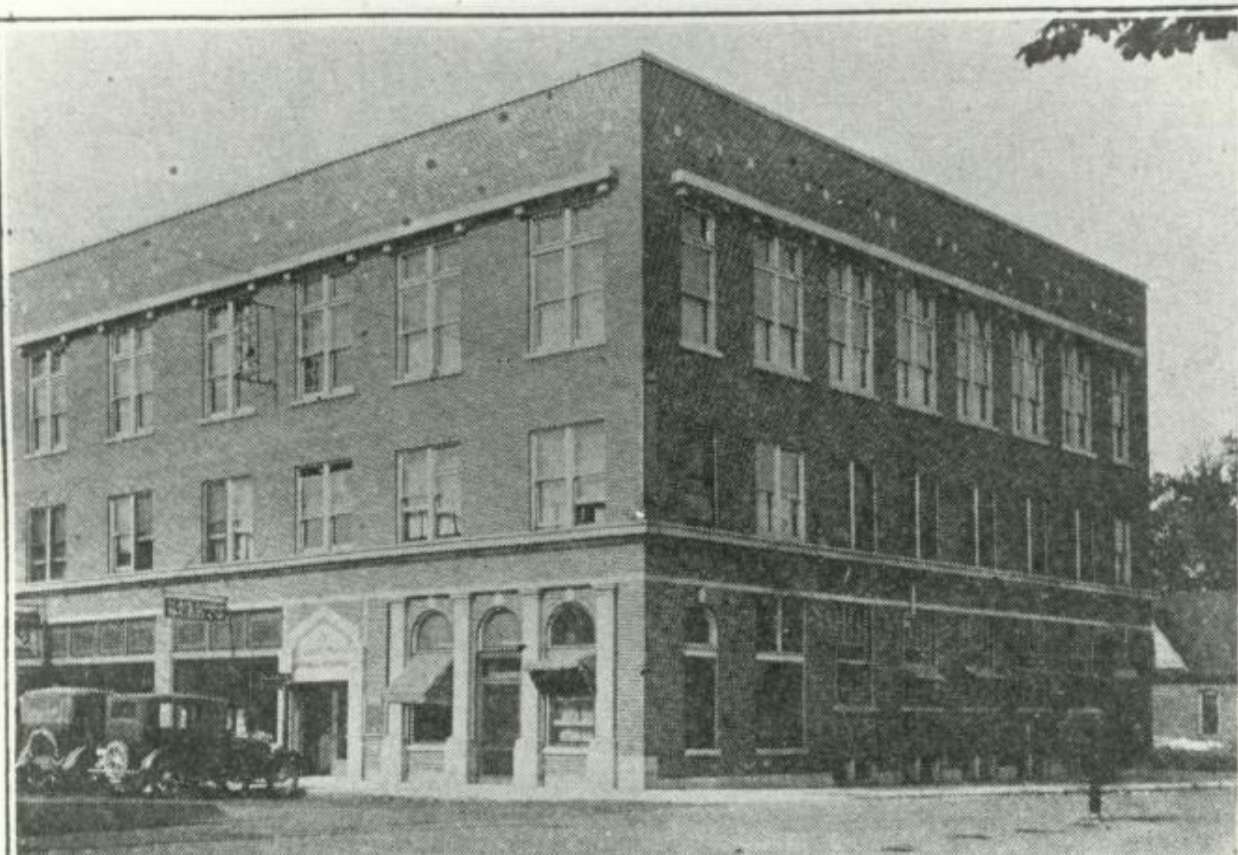


Figure 13. Photograph of the Masonic Building taken c.1919 (Farewell T. Brown Photographic Archive 96.521.1-3)