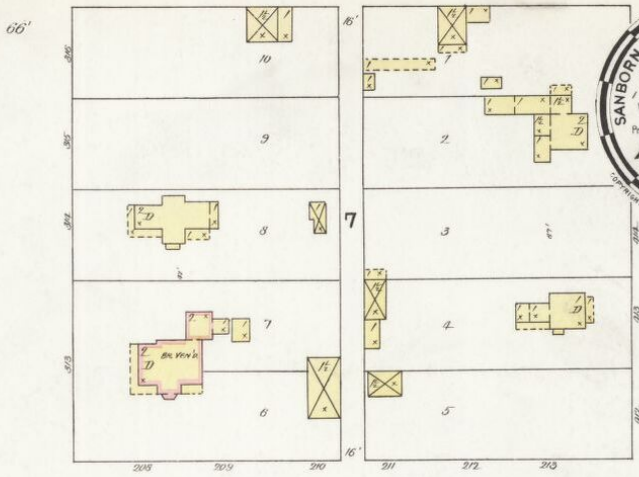
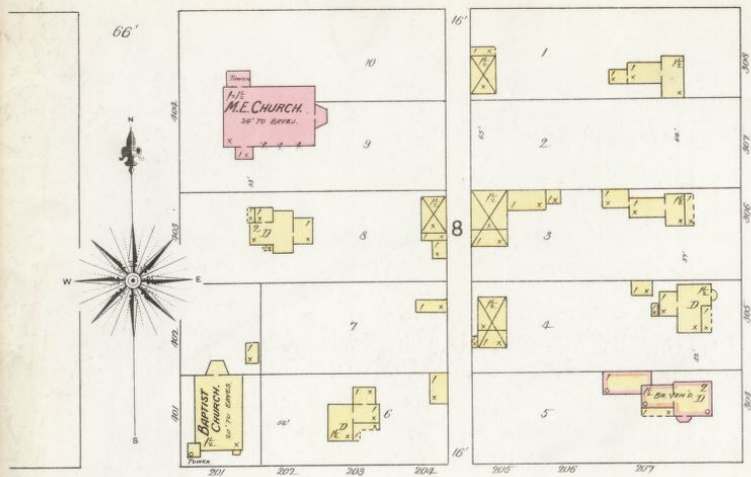


2 1927

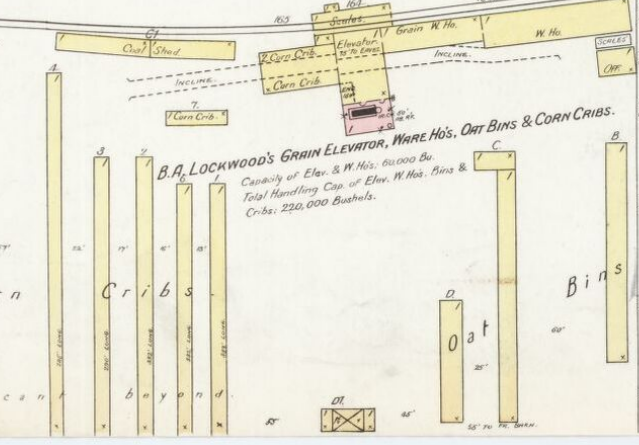
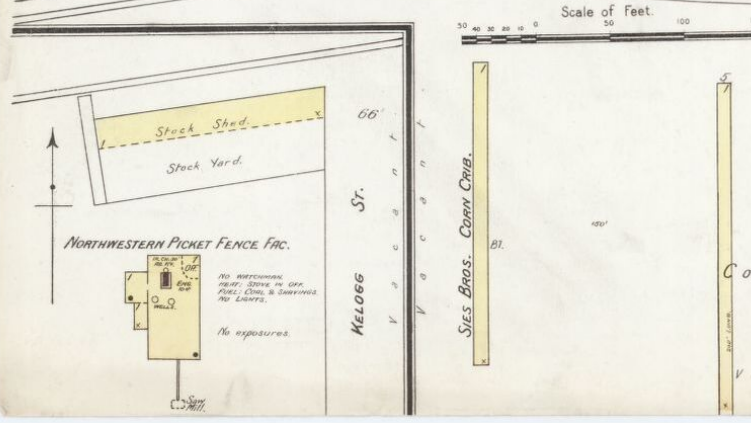
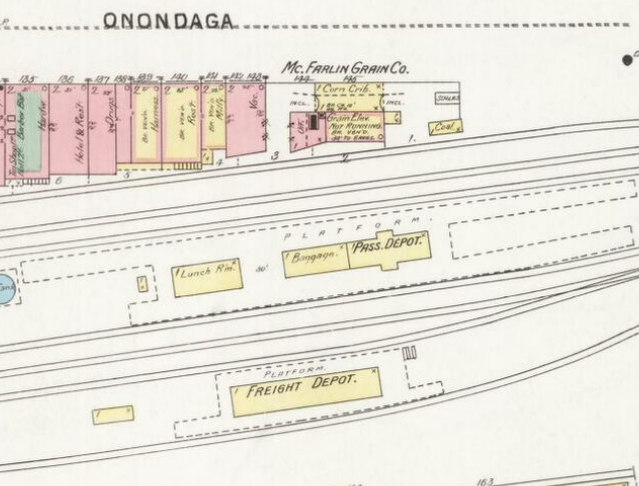
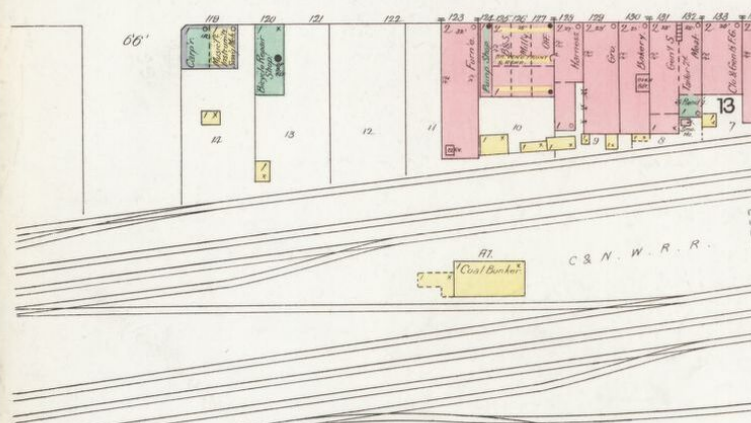
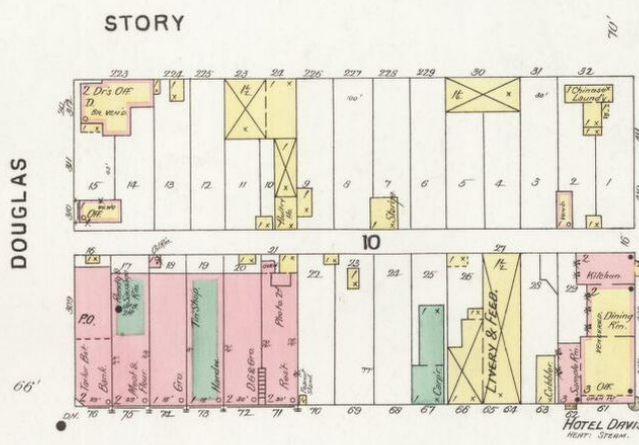
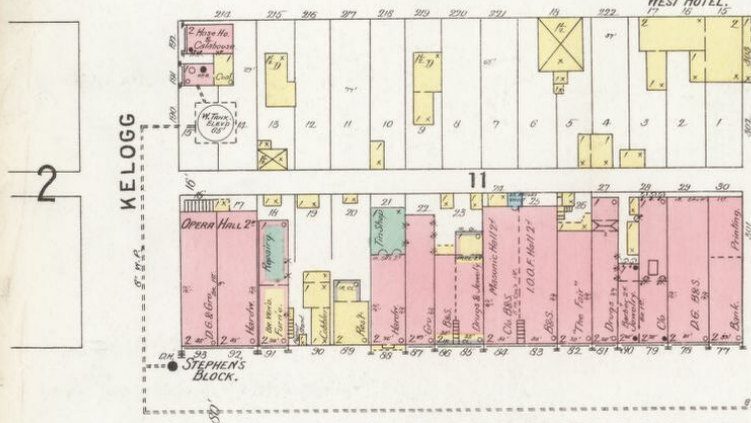
IOWA

1 (202) 2 SHEETS

SANBORN-PERRIS MAP CO. LIMITED
 174 E. Broadway
 NEW YORK
 Population 2000
 10 Steam & Windmill Engines
 1 Independent Hoist Lact
 Water Facilities Sea Moors
 Prevailing Winds from N.W.
AMES *LES.*
 Survey Co.
 FEB. 1896.
 SCALE 50 FT. TO AN INCH
 CORRECTED BY THE SANBORN-PERRIS MAP CO. LIMITED



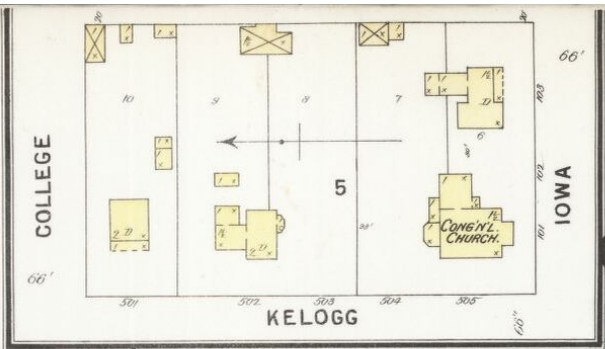
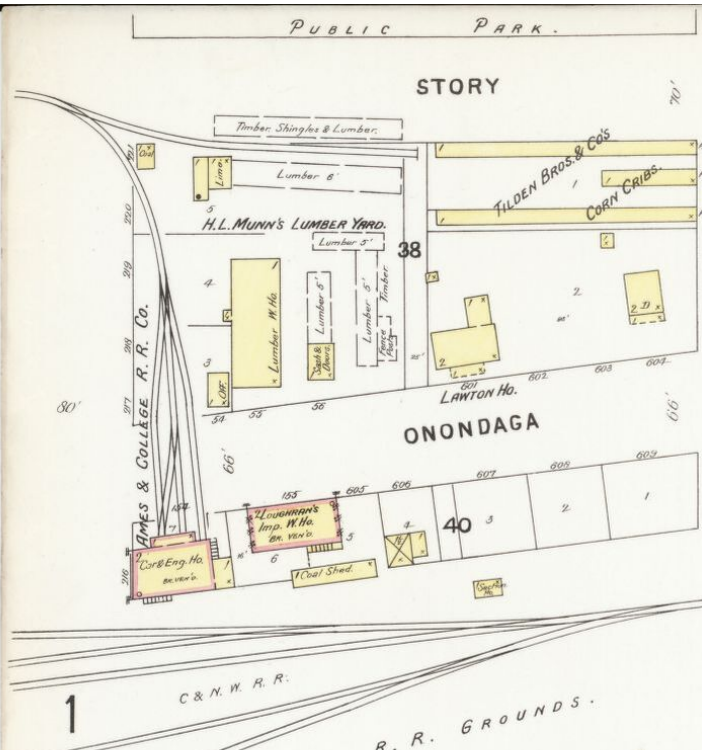
NOTE.
 Water Facilities:
 WATER WHEELS: 1000' WHEEL, 400' DIAM.
 SHIP LIFT: 100' DIAM. STEEL, 100' HIGH.
 WATER PUMP: 24" DIAM. 10' HIGH.
 17" DIAM. STEEL, 10' HIGH.
 FROM: 100' DIAM. STEEL, 10' HIGH.
 17" DIAM. STEEL, 10' HIGH.
 Fire Department:
 100' DIAM. STEEL, 10' HIGH.
 17" DIAM. STEEL, 10' HIGH.



KEY
 FIRE WALL OR ROOF
 FRAME PARTITION
 OPENING & HIGH ROOF
 WOODWORK - SHEET METAL
 STABLE
 WINDOW IN 1ST STORY
 1 1/4" DIA.
 4" DIA.
 STILES COLORED YELLOW AND FRAME
 RED BRICK
 BLUE STONE
 BROWN IRON
 BROWN ADHES
 GREEN SPECIALS
 MARKED (S) ARE COULT LINES
 (D) INDICATE RELATIVE HEIGHTS
 ALTERNATE LINES NOT ARE ACTUAL
 CONDUCTIVE - UNUSUAL
 BROWN LINE NEAR BILLS WOOD CORNICE
 SOLID METAL

Scale of Feet.

SOUTH ST. (ARBITRARY)



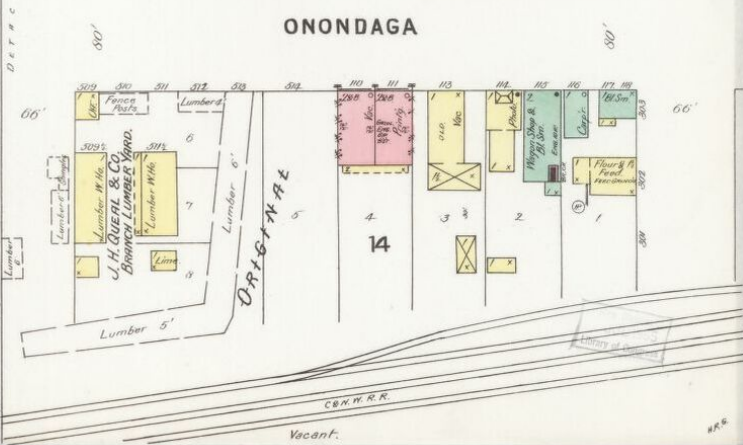
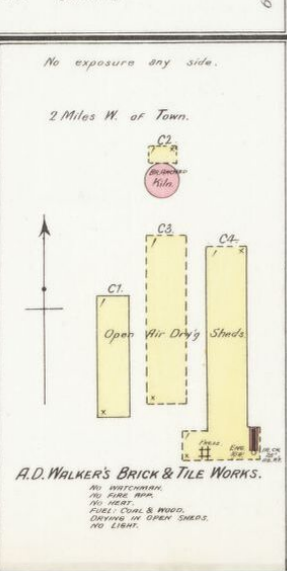
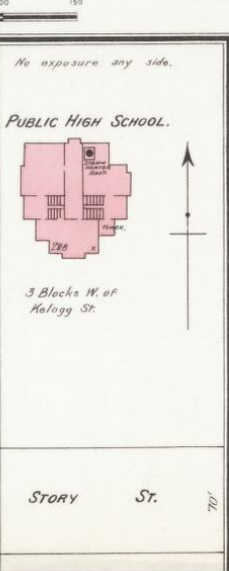
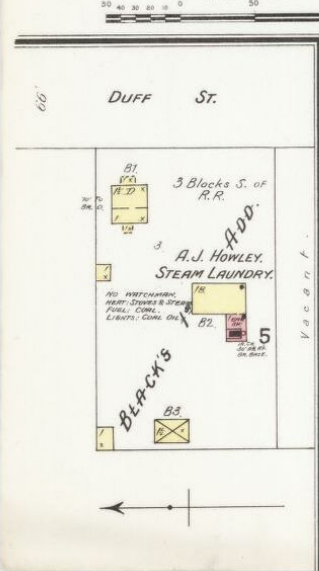
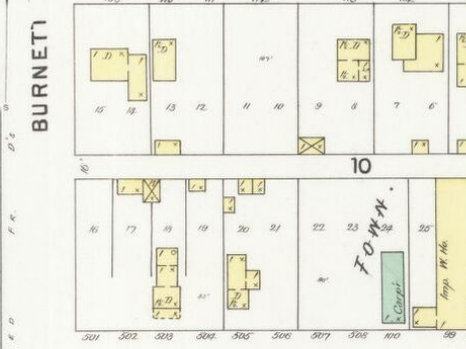
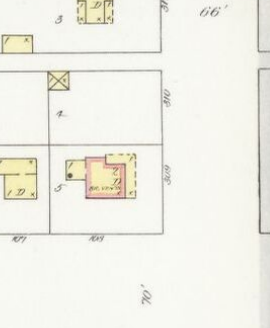
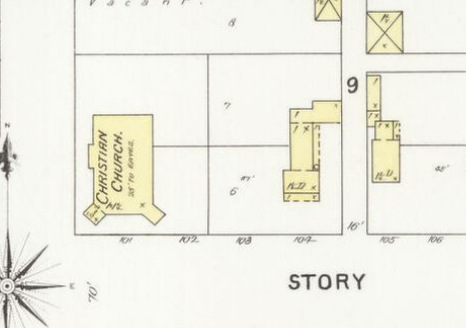
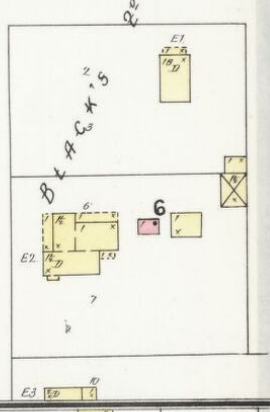
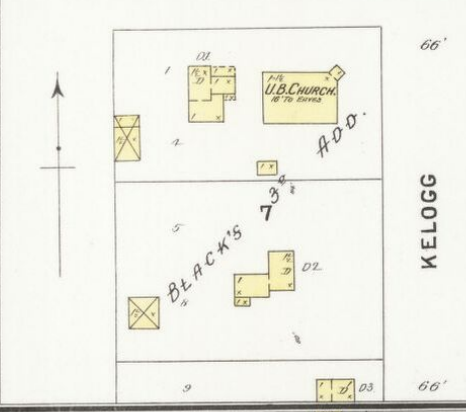
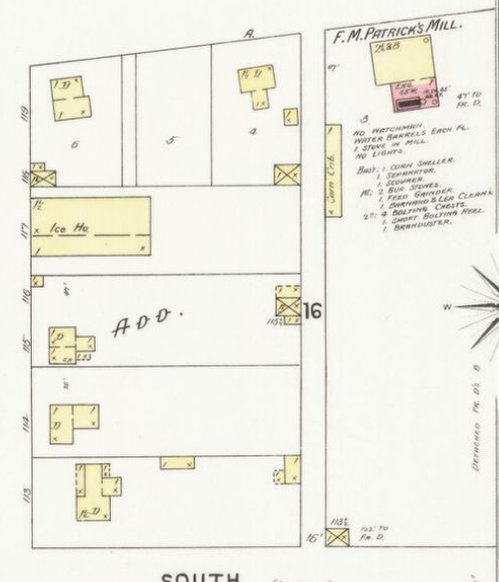
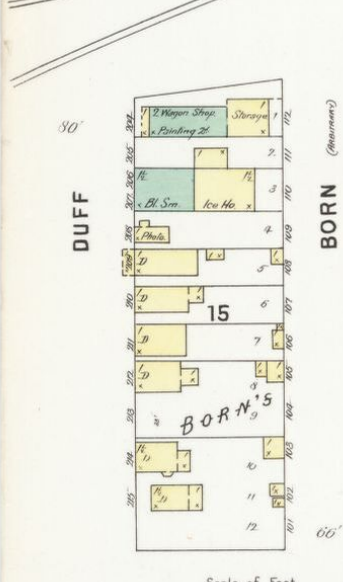
Vacant.

SOUTH SIDE PUBLIC SCHOOL.

FEB. 1896

AMES
IA.

GRANT



Scale of Feet. 0 50 100 150

