

INDEX.

SPECIALS.	NUMBER	NAME	NUMBER
A	1	Northwestern Mfg Co.,	2
A	2	Ames & College E. E. Co's Eng'g, & Electric Light & Water works,	2
A	3	Memorial M. E. Church,	2
B	1	Baptist Church,	2
B	2	Opera Hall,	2
B	3	Oxner, J. D., Feed-mill,	1
C	1 & 3	Public Schools,	1 & 3
C	(new)	C. & N. W. R. R. Depot (old),	2
C	3	Christian Church,	2
C	4	Congregational Church,	2
C	5	Crook Feed-yard,	2
H	1	Hotel Davis,	2
H	2	Howley, A. J., Steam Laundry,	2
L	1	Lawton Hotel,	1
L	2	Lockwood, H. A., Elev. Warehouse, &c.,	1
L	3	Loughran Imp. Warehouse,	1
M	1	Mann & Son, Lumber-yard,	2
N	1	U. B. Church,	1
N	2	Walker, A. D., Brick and Tile Works,	1
N	3	West Hotel,	2
N	4	Wings Model Laundry,	2



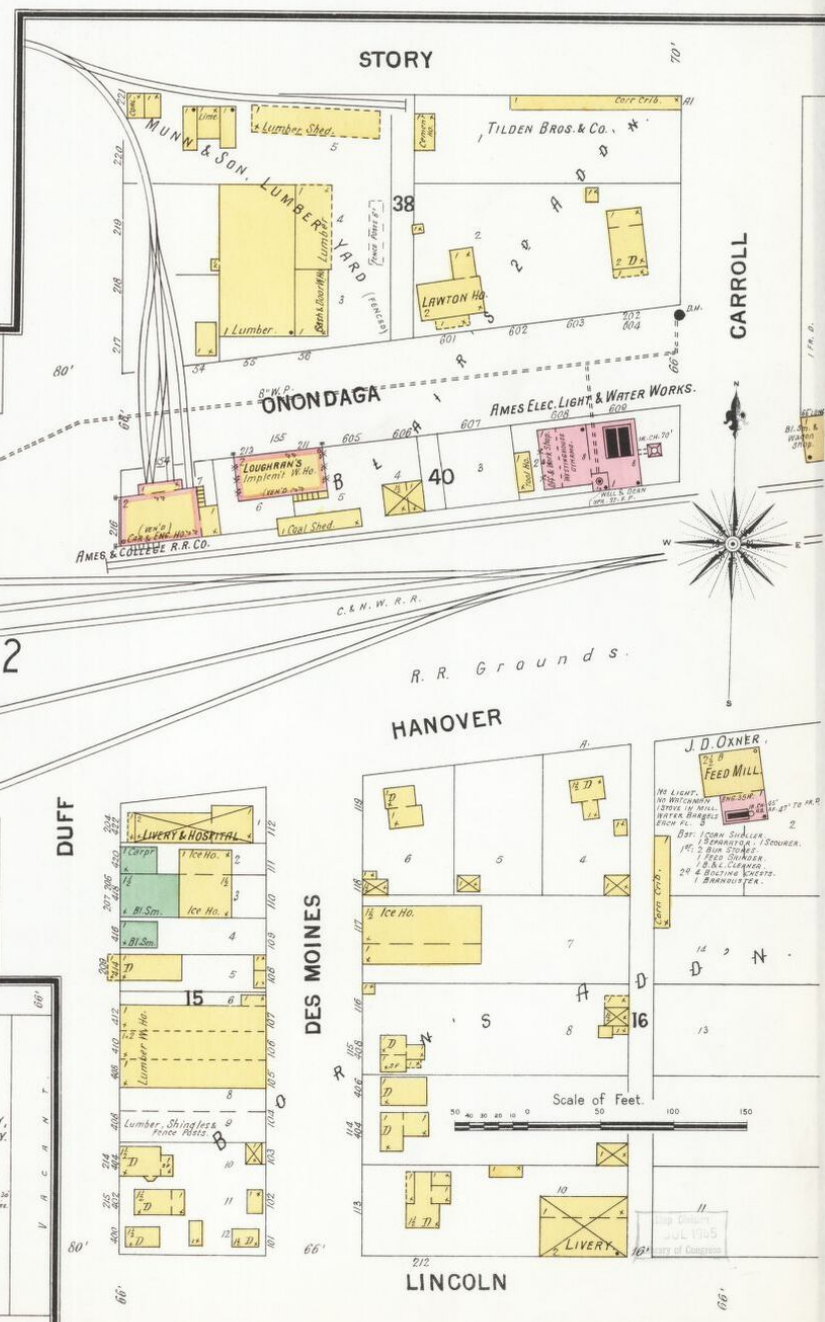
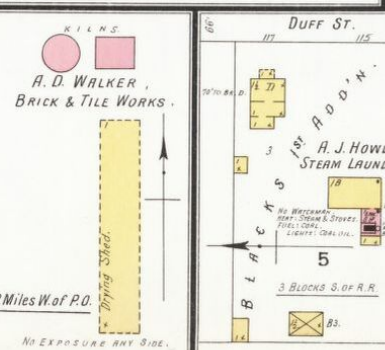
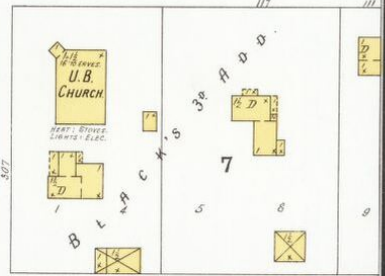
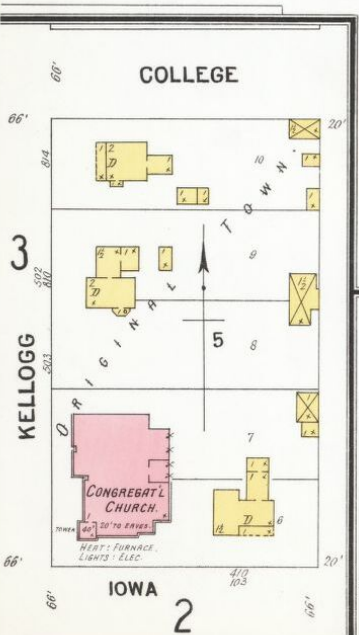
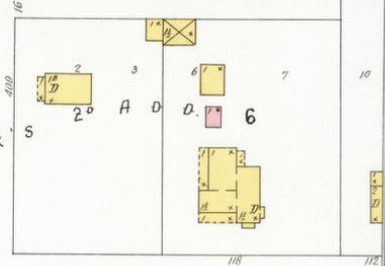
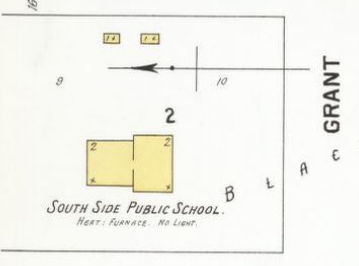
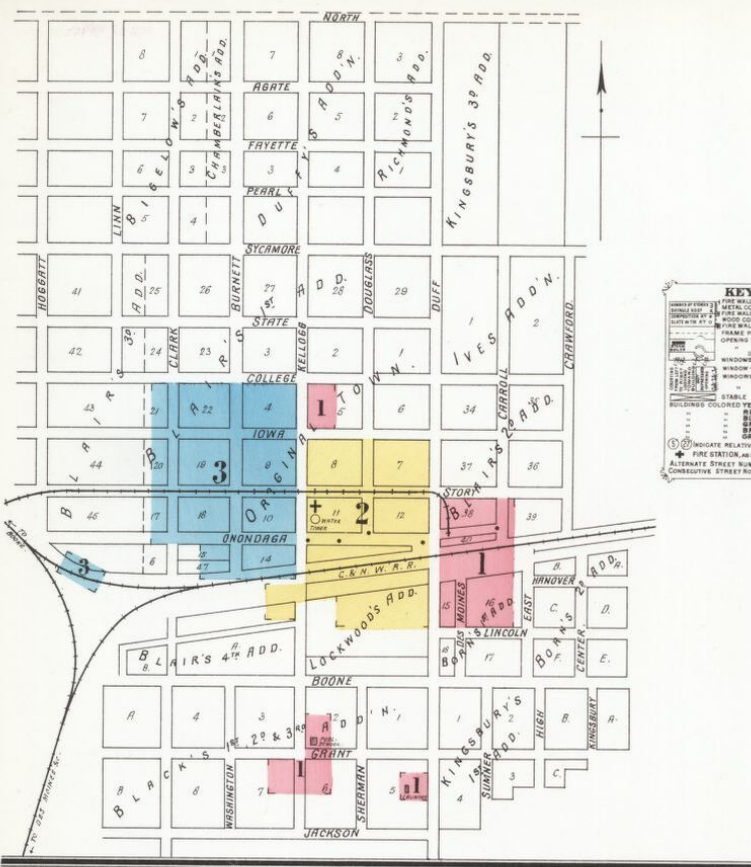
NOTE.

Water Works: Water under Pressure 85 lbs. (No Direct Pressure). Source of Supply: Drilled Wells, 7" diam. 150' deep. One 2000 gallon tank. P. M. Pumps with 1200 5000 Gall. Tank of a 10000 gallon 45 inch 5000 2000 20' diam. 20' high. 1000' 4" Water Main. 500' 2 1/2" W.P.S. Fire Dept. Volunteer. One Hose Cart. 100' 2 1/2" hose.

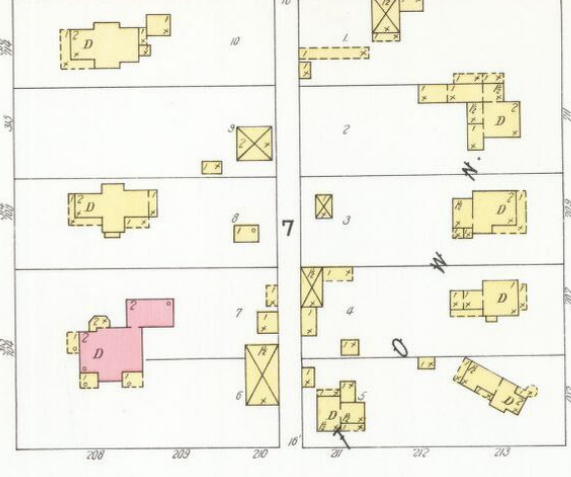
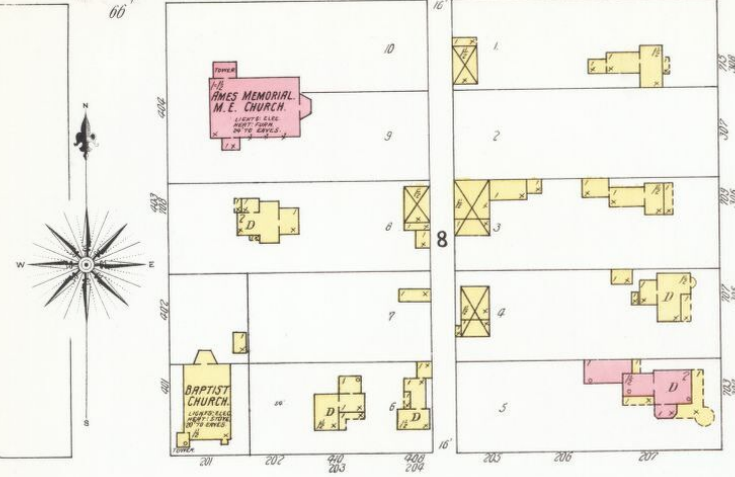
76867
Inventory of Changes
Two Copies Received
NOV 27 1900
NOV 19 1900
NOV 2 1900
FIRST COPY
Second Copy Delivered
ORDER DISCUSS
JAN 2 1901

KEY

STABLE BUILDINGS COLORED YELLOW ANY FRAME
 RED BRICK
 BLUE GRAY IRON
 GREEN BRICK
 SPECIALS
 (C) INDICATE RELATIVE HEIGHTS
 * FIRE STATION AS SHOWN ON KEY MAP
 ALTERNATE STREET NUMBERS ARE ACTUAL
 CONSECUTIVE STREET NUMBERS ARE ARBITRARY



Aug. 1900
AMES
IA.



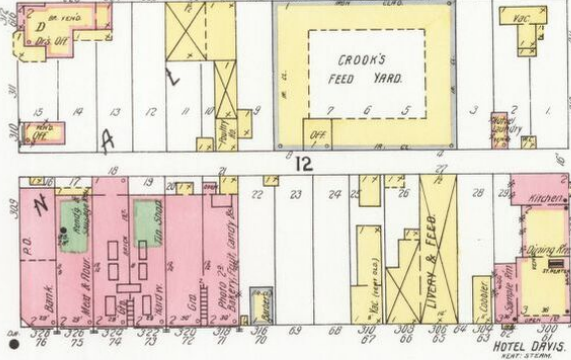
Ames & College R.R. Co.

STORY

KELLOGG

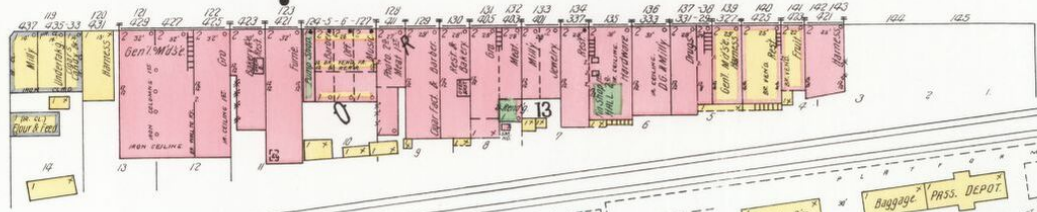
DOUGLASS

DUFF



STEPHENS BLK.

ONONDAGA

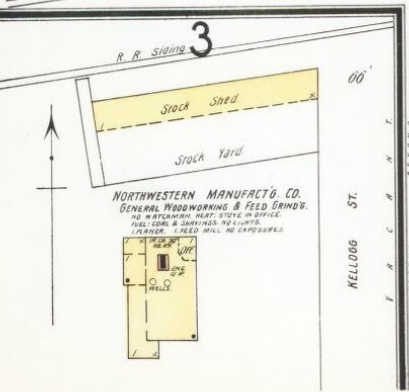


C & N.W. R.R.

BE REMOVED WITH THE RAILROAD. SEE STREET.

FREIGHT DEPOT.

Scale of Feet. 0 50 100 150



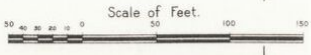
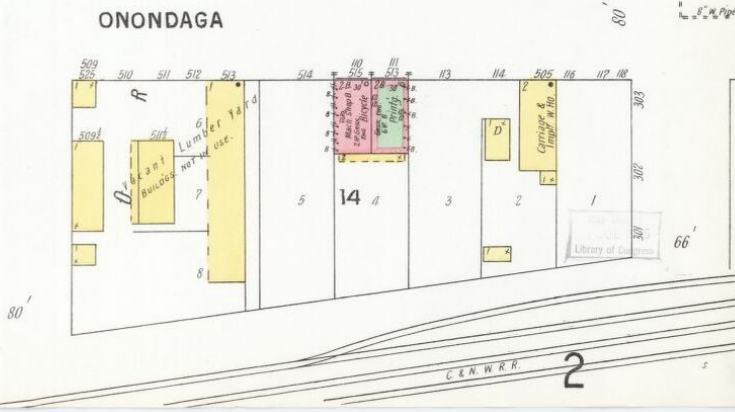
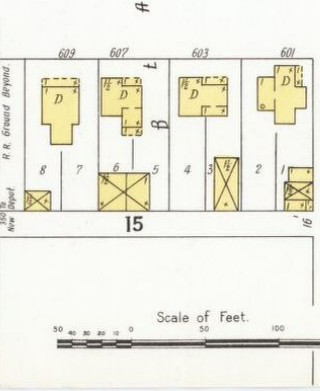
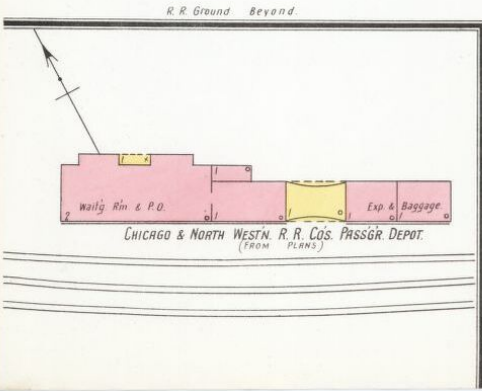
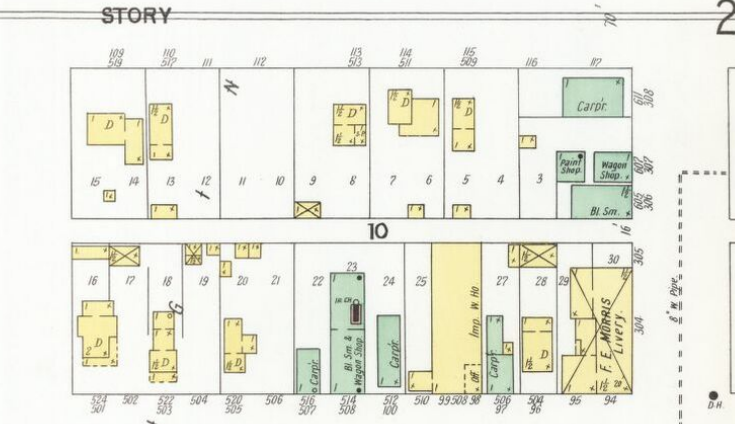
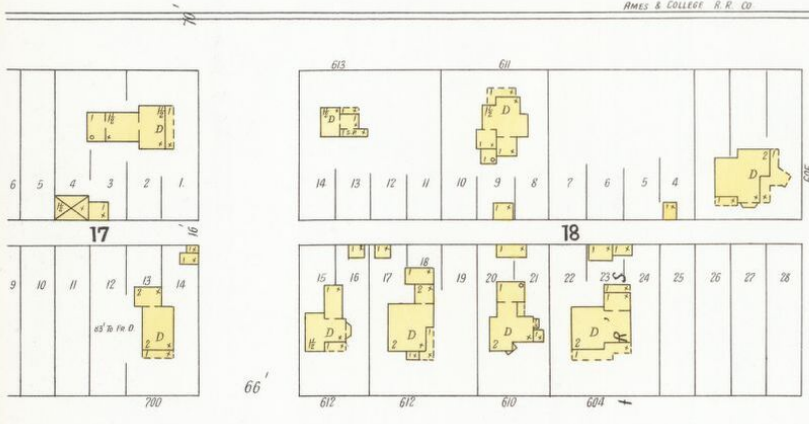
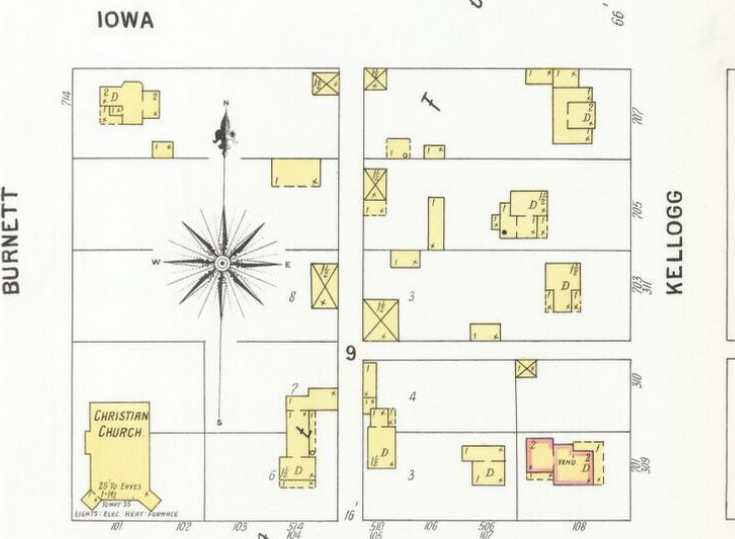
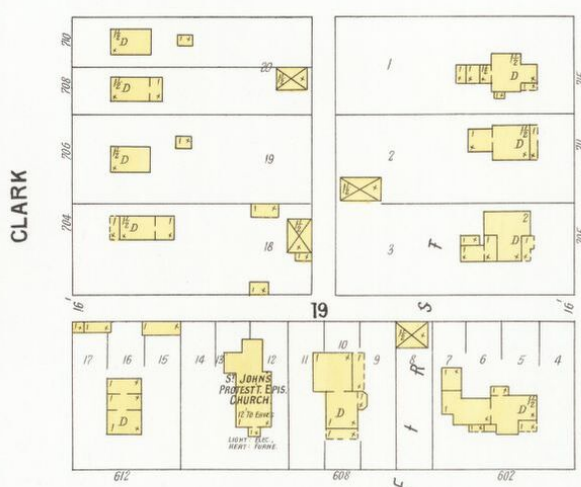
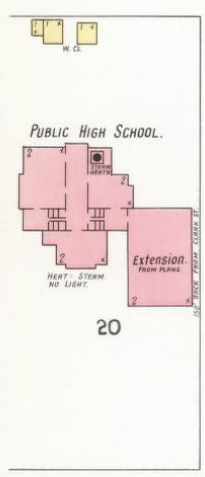
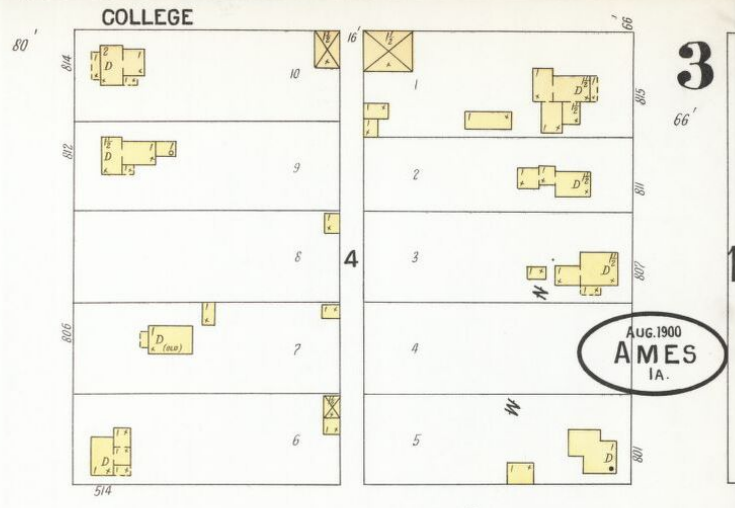
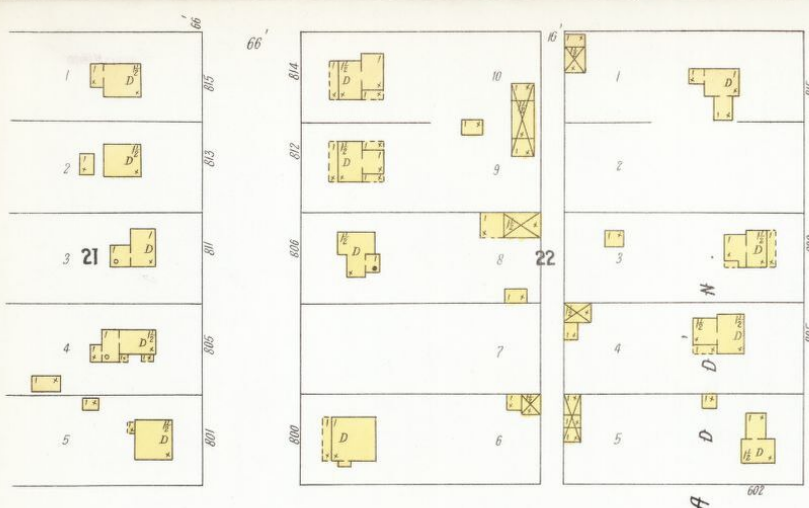
KELLOGG ST.

LOCKWOOD'S

B. A. LOCKWOOD'S GRAIN ELEVATOR, WAREHOUSE, DAT BINS & CORN CRIBS.
 Capacity of Elevator & W.H.s 75,000 Bushels.
 Total Handling Cap. of Elev. W.H.s. Bins & Cribs. 245,000 Bushels.
 1 CORN SPILLER
 1 LUBRIC OIL CLEANER
 1 OAT CLIPPER
 1 REBBER DEPARTMENT

W. H. No. 1

LINCOLN ST.



3

1

KELLOGG

2

10

ONONDAGA

Library of Books

2