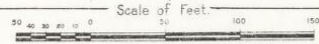
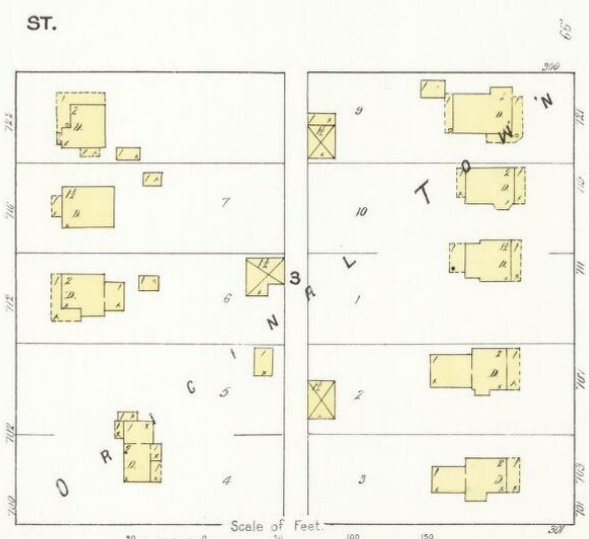
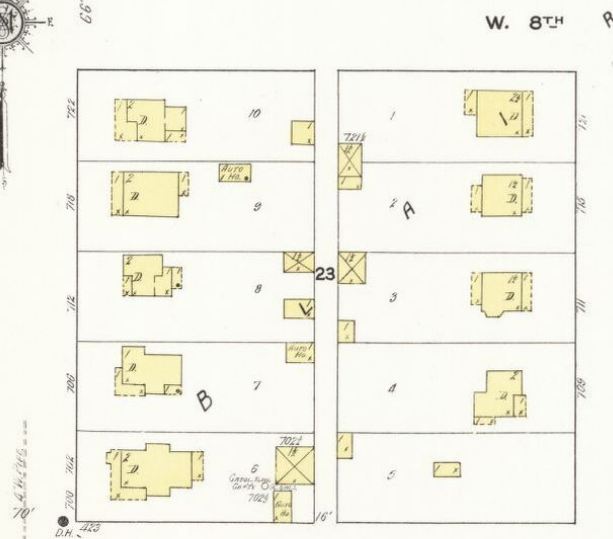
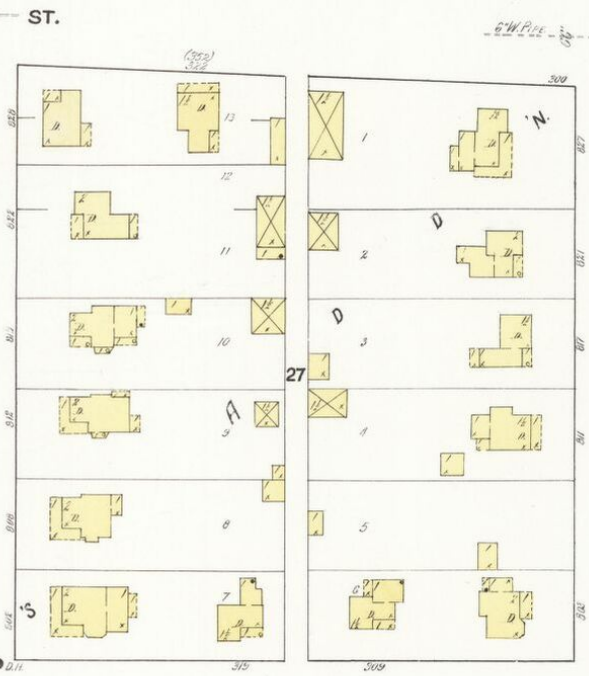
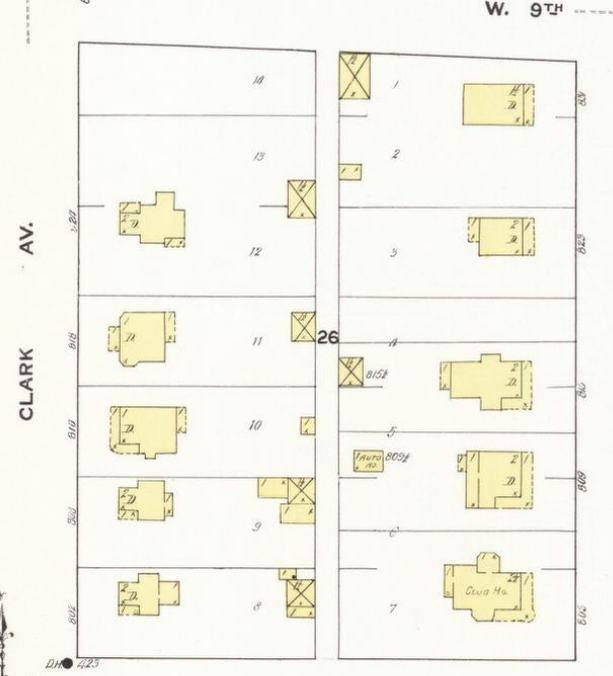
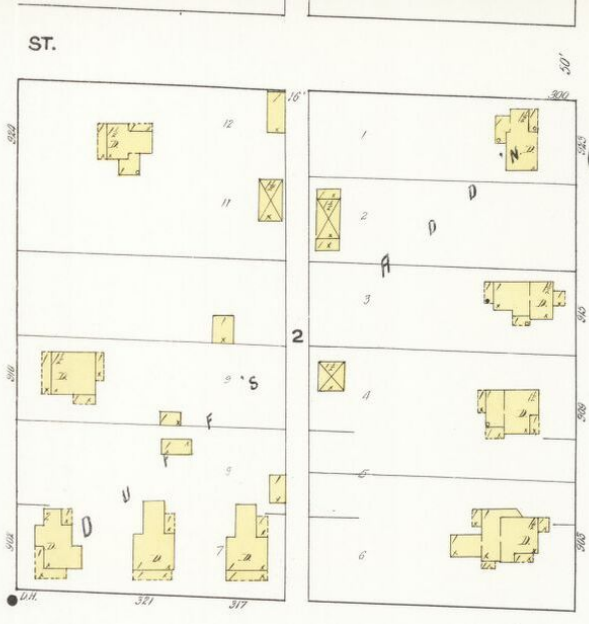
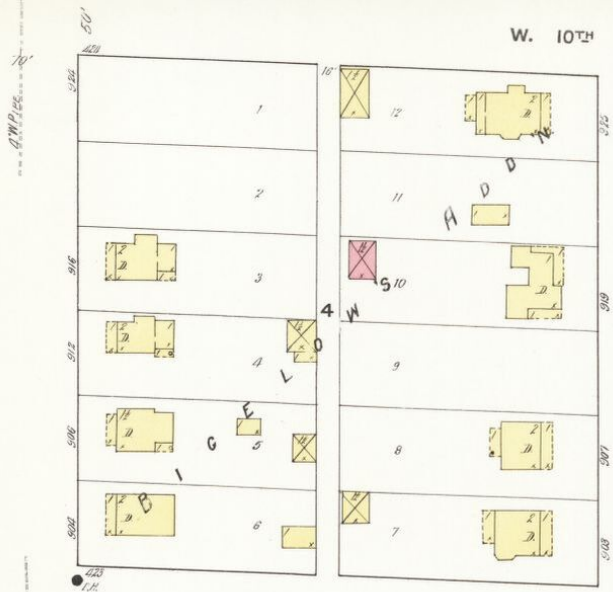
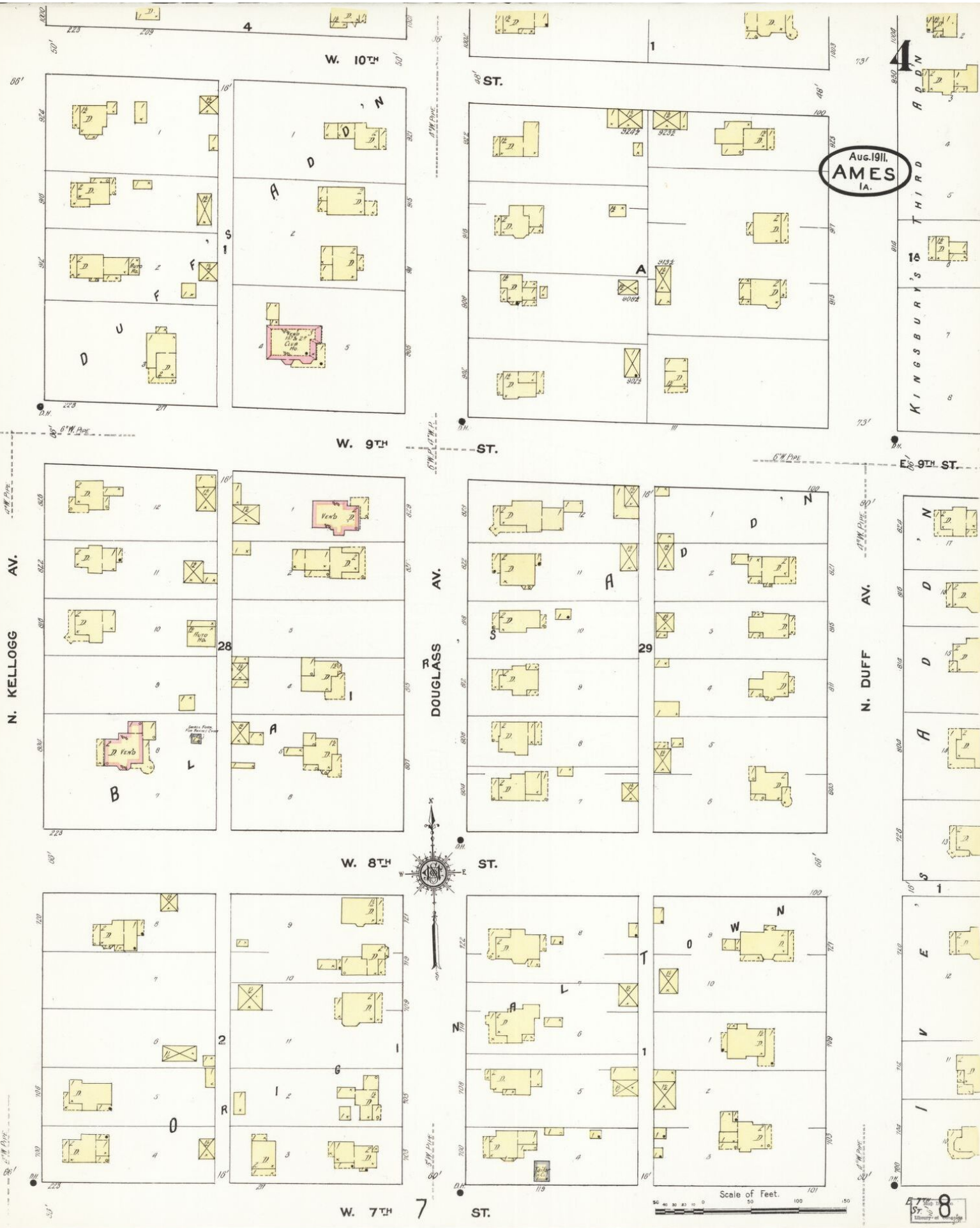


Aug. 31, 1911.
AMES
IA.



Map drawn by H. C. ...

Aug. 1911.
AMES
I.A.



W. 10TH ST.

ST.

W. 9TH ST.

ST.

W. 8TH ST.

ST.

W. 7TH ST.

ST.

N. KELLOGG AV.

DOUGLASS AV.

N. DUFF AV.

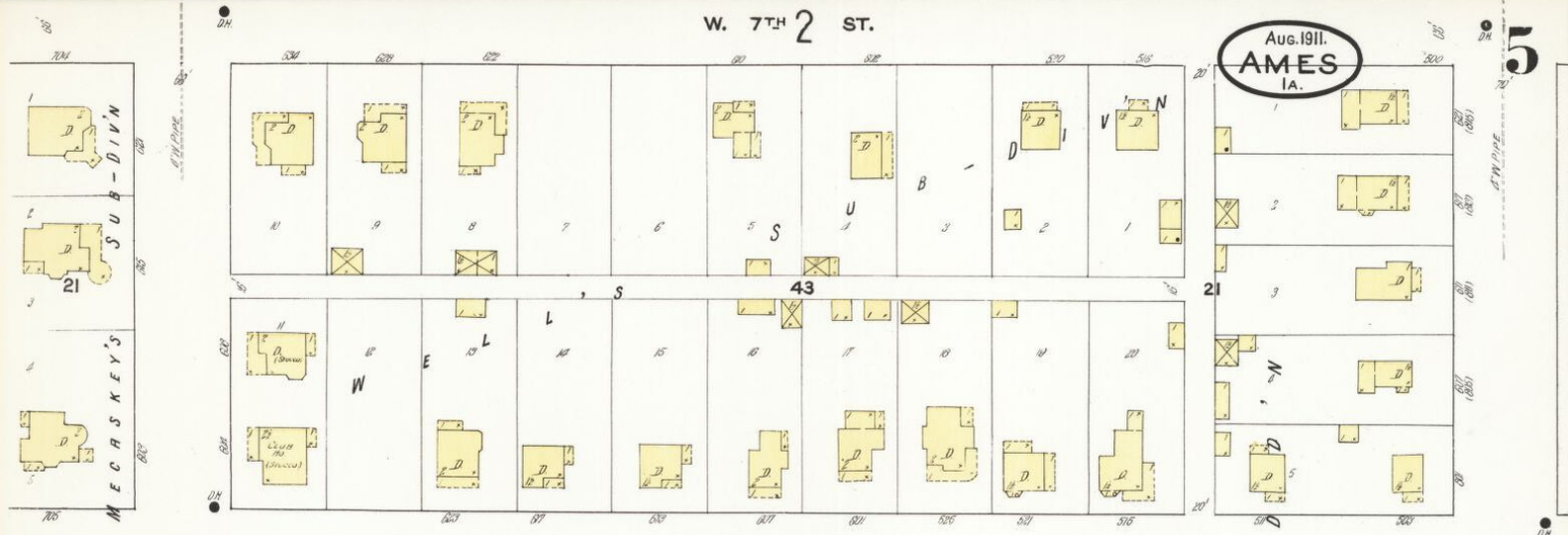


Scale of Feet.
0 50 100 150

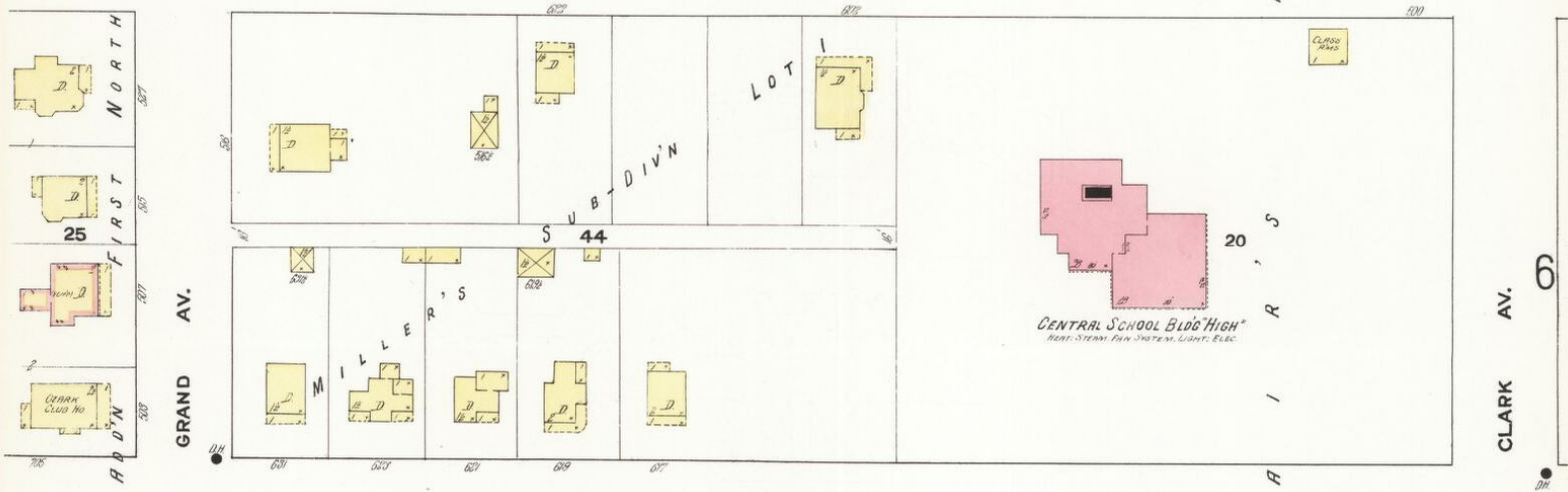
47
ST
Library of

W. 7TH 2 ST.

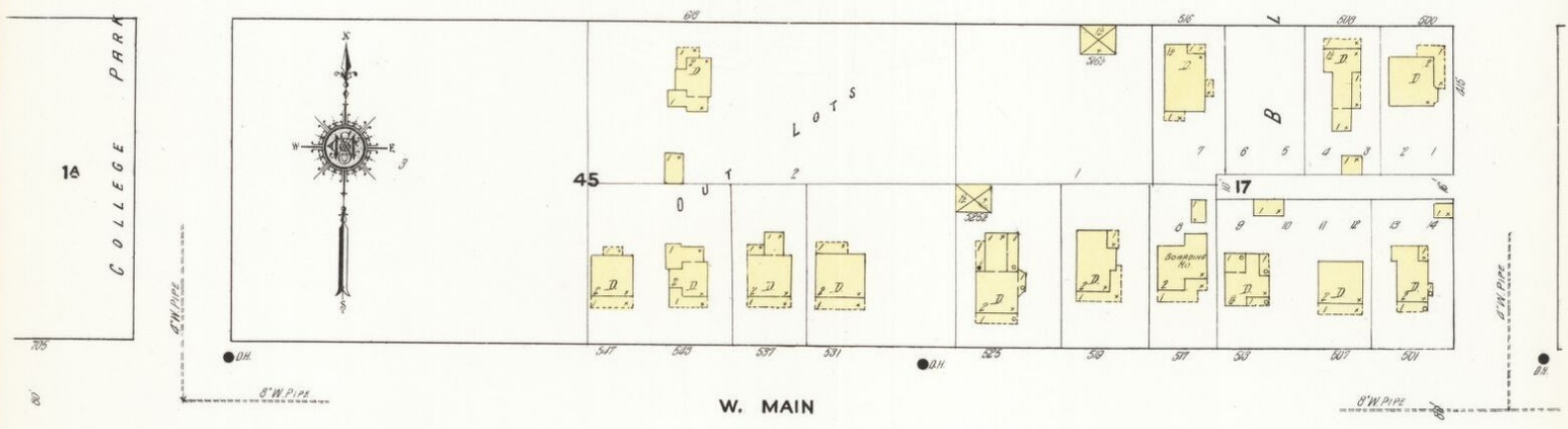
Aug. 1911.
AMES
IA.



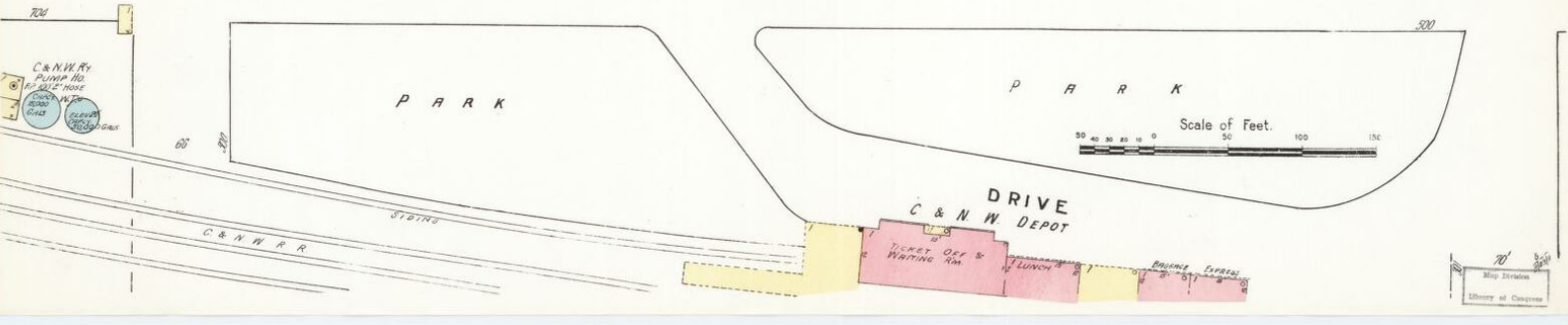
W. 6TH ST.



W. 5TH ST.



W. MAIN



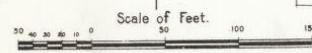
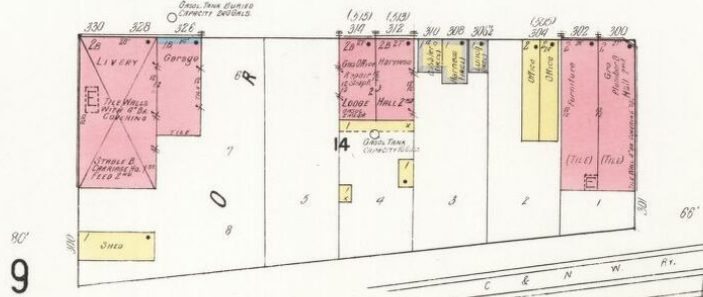
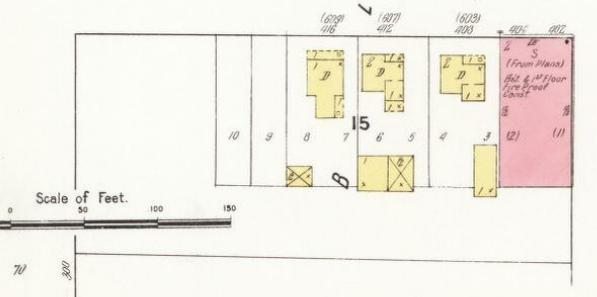
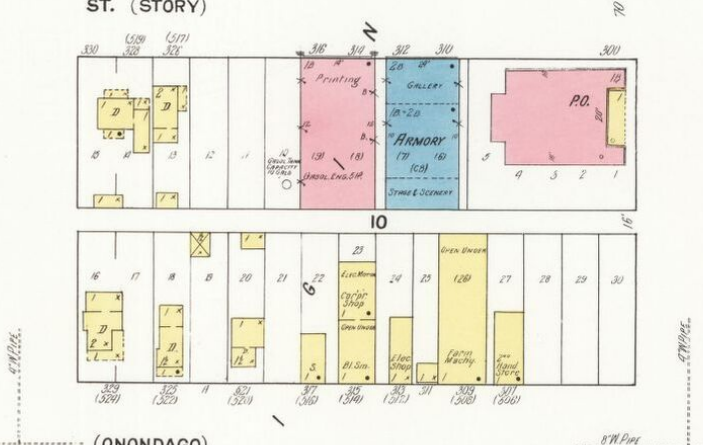
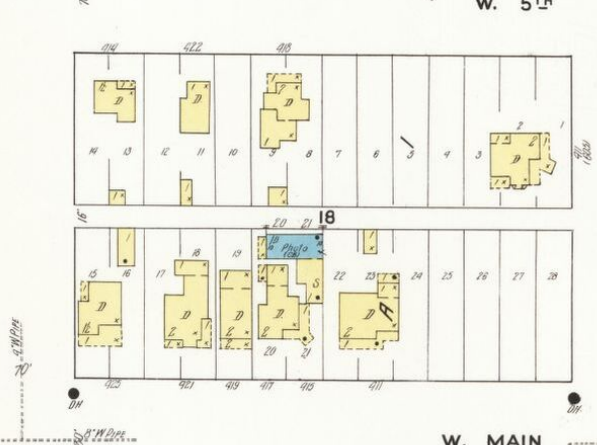
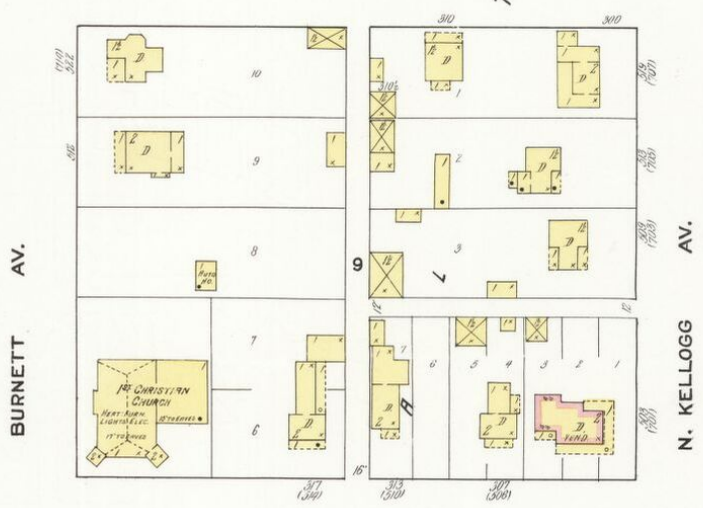
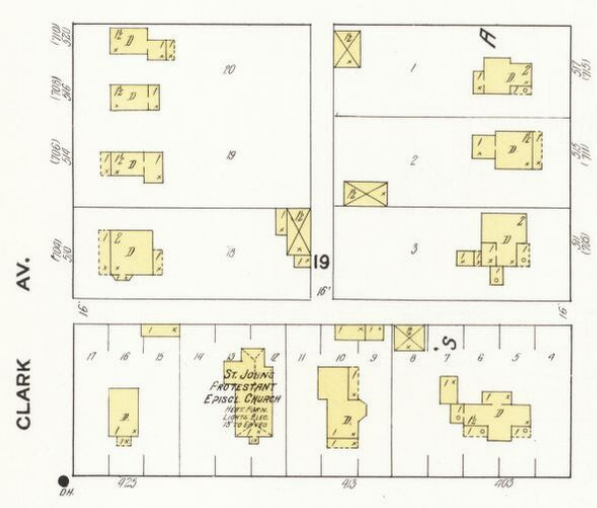
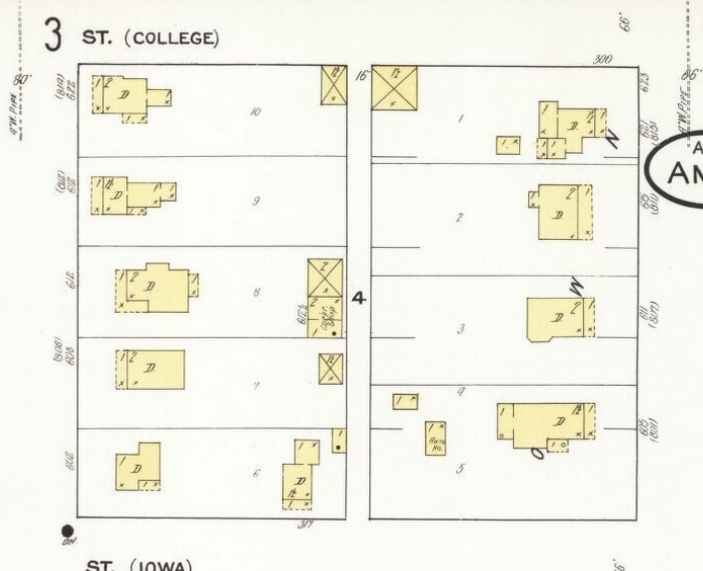
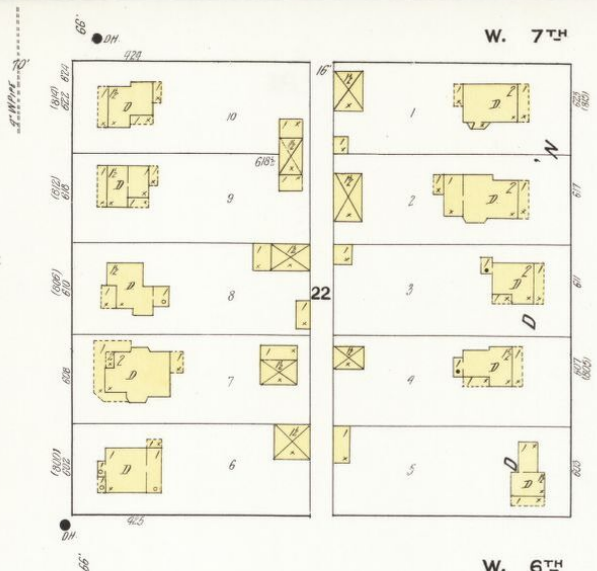
5

CLARK AV.

Map Division
Library of Congress

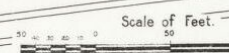
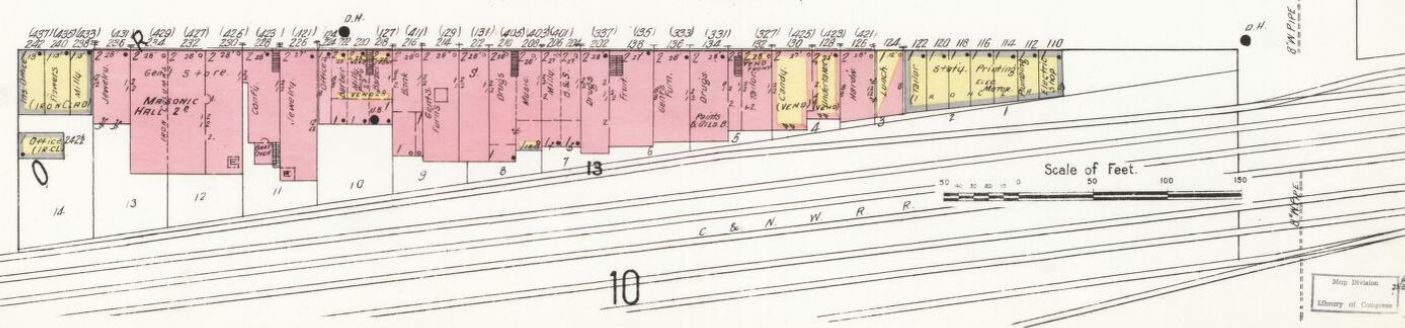
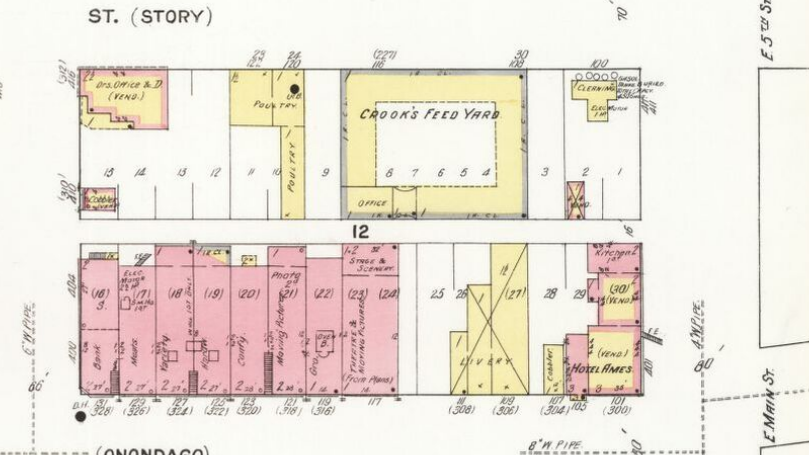
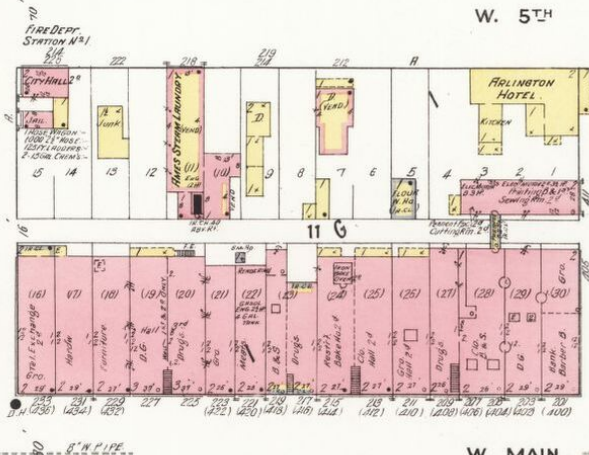
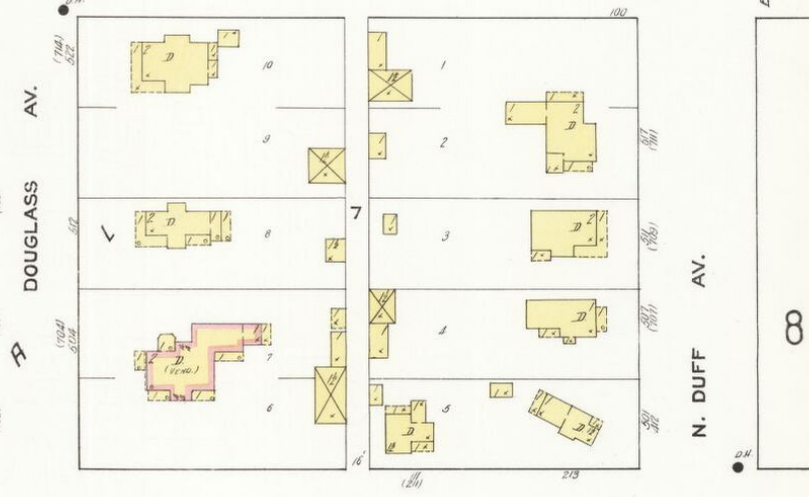
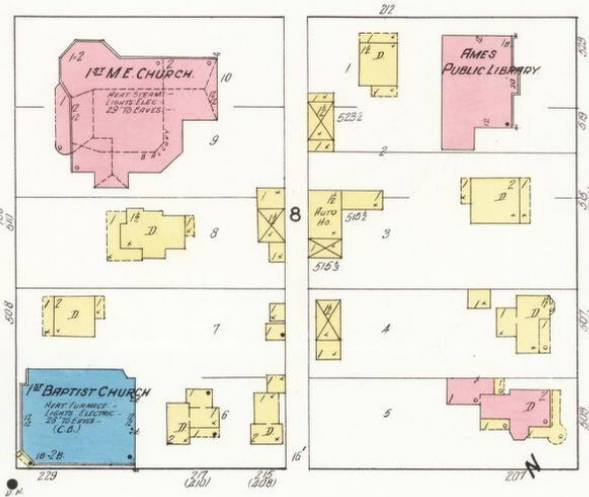
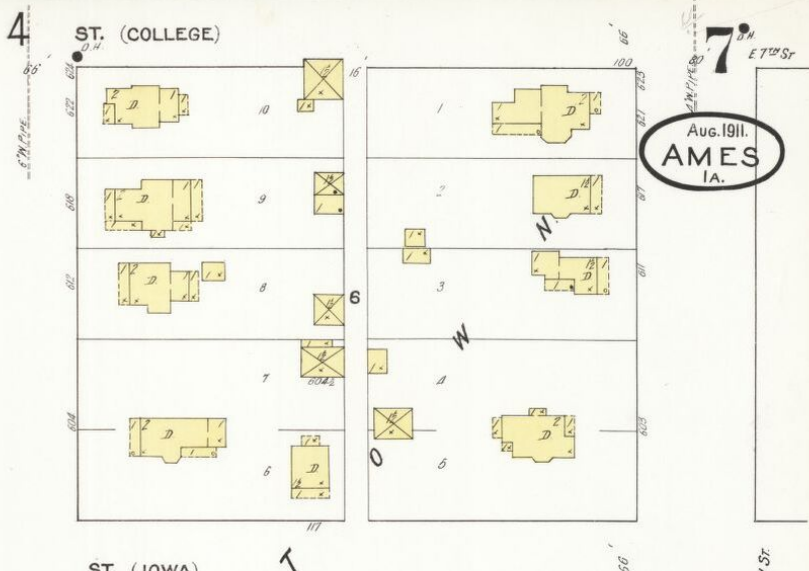
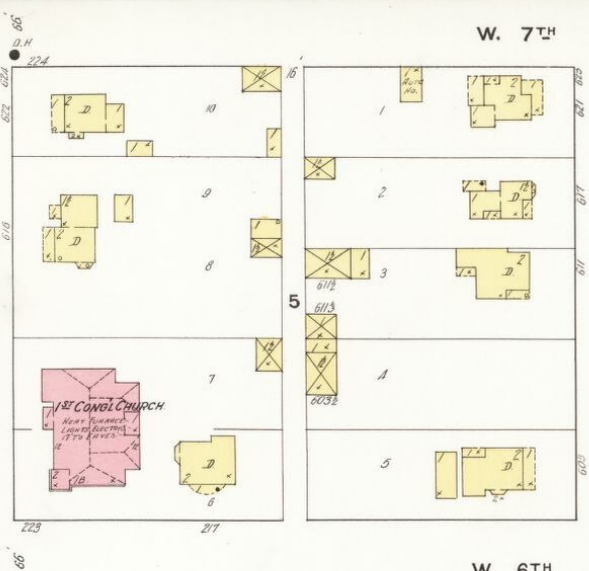


Aug. 1911.
AMES
IA.



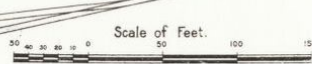
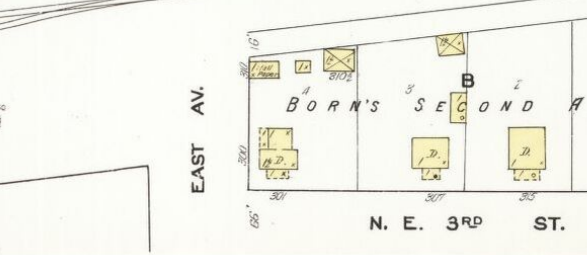
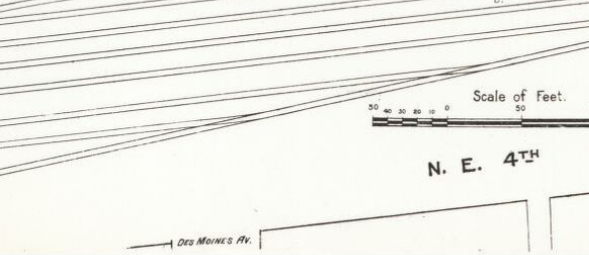
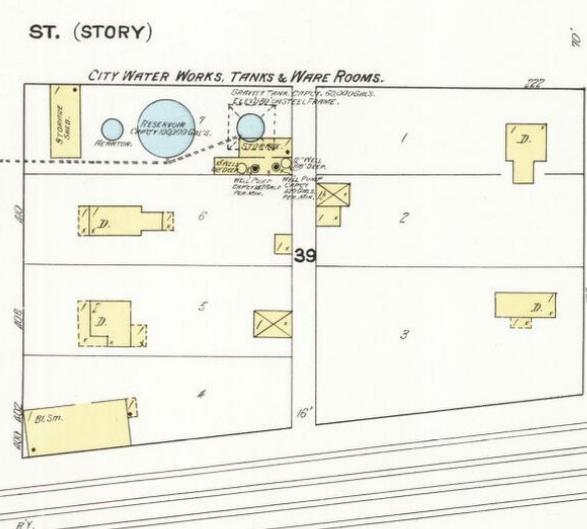
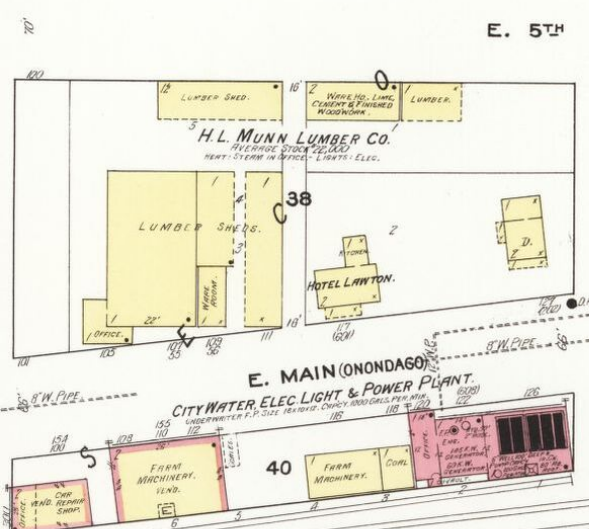
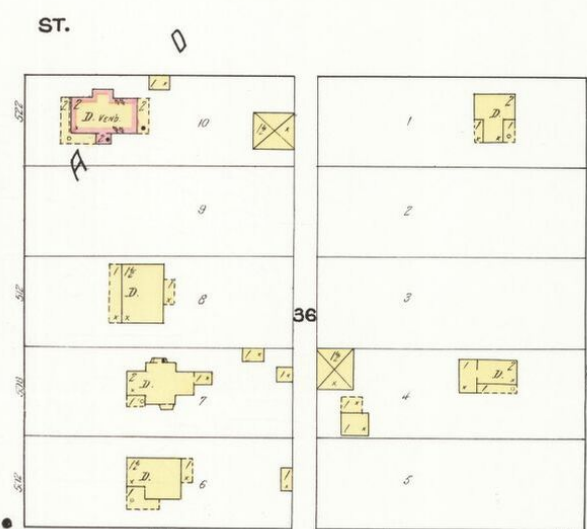
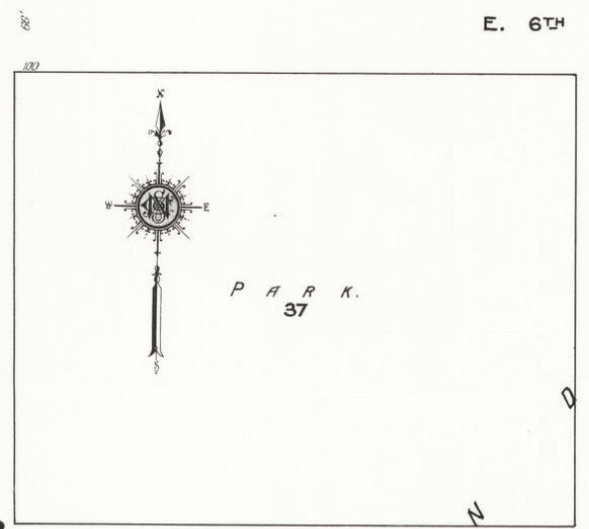
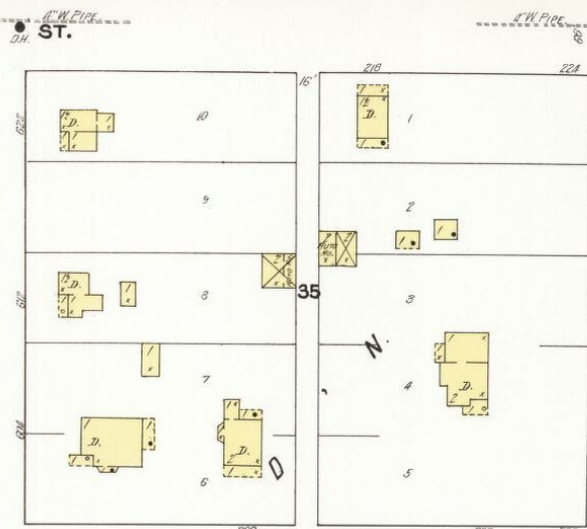
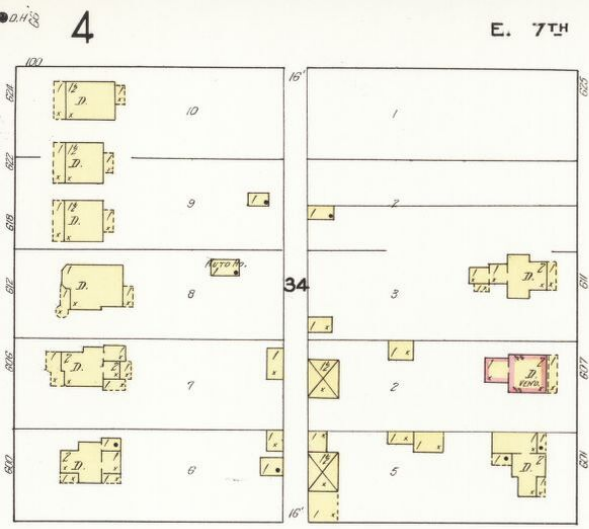
City of Ames
Library of Copies

Aug. 1911.
AMES
IA.

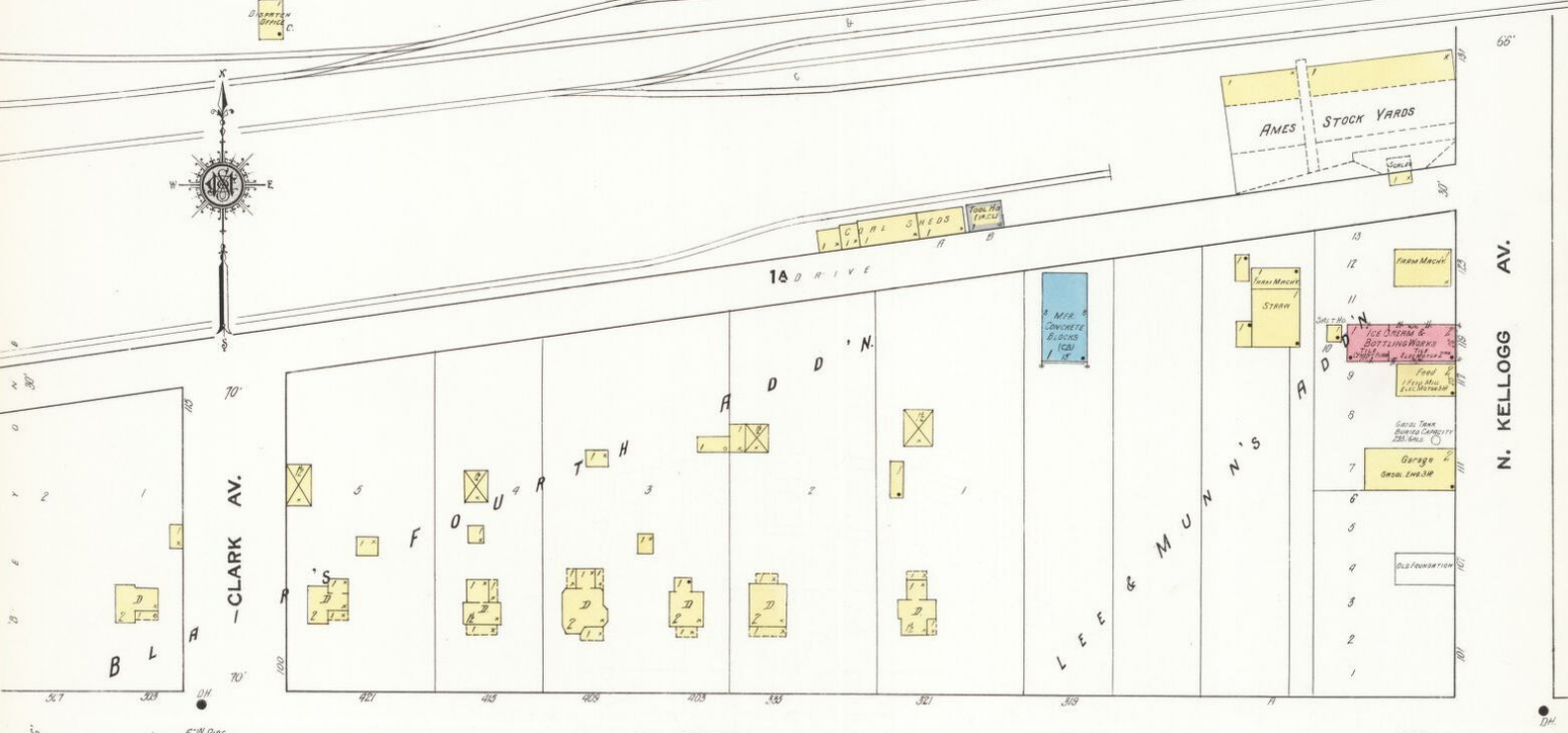


W. 7th ST.
W. 6th ST.
W. 5th ST.
W. Main St.

8
Aug. 1911.
AMES
I.A.
CRAWFORD AV.
EAST AV.
CENTER AV.



Map Division
Library of Congress



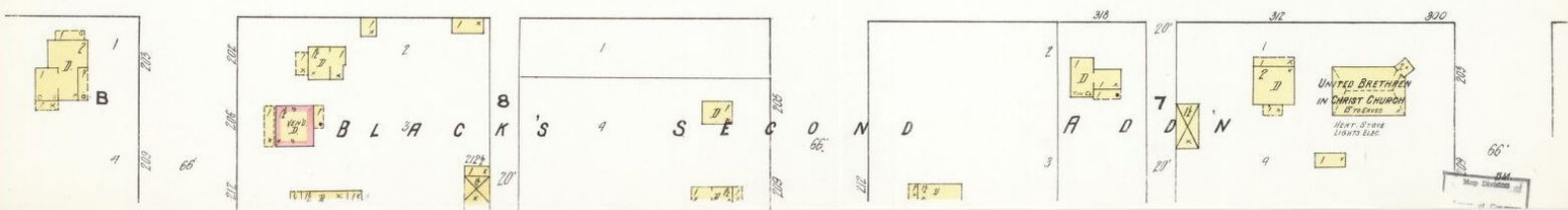
W. BOONE



S. W. 2ND ST.

ST.

Scale of Feet.



UNITED BRETHREN
IN CHRIST CHURCH
15 PLEASANT
W. 2ND ST. & W. 3RD ST.
L. H. ELCO

Aug. 1911.
AMES
IA.

C. & N. W. R.R.
FREIGHT HO.

COAL SHED

B. A. LOCKWOOD GRAIN CO.

1A
NO BATTENED LIGHTS, ELEC. HOOT STOPS,
POWER, STEAM & GAS, LEAD COOKERS,
EXTENS. WATER PUMPS & PIPES DISTRD.

BUILT 1898
W. H. O.
FEED MILLS (1600 CIRC)
600 HRS PER WK.

BUILT 1898
W. H. O.
FEED MILLS (1600 CIRC)
600 HRS PER WK.



N. KELLOGG AV.

N. DUFF AV.

NE 2nd ST.

W. BOONE

S. KELLOGG AV.

SHERMAN AV.

S. DUFF AV.

3rd WARD
PUBLIC SCHOOL

S. W. 2ND

ST.

Scale of Feet.

SE 2nd ST.

Not Validated
73
City of Ames

Aug. 1911.
AMES
IA.



N. E. 4TH ST.

N. E. 3RD ST.

N. E. 2ND ST. (LINCOLN)

S. E. 2ND ST.

Scale of Feet.

AV.

DES MOINES AV.

EAST AV.

CENTER AV.

N. DUFF

S. DUFF AV.

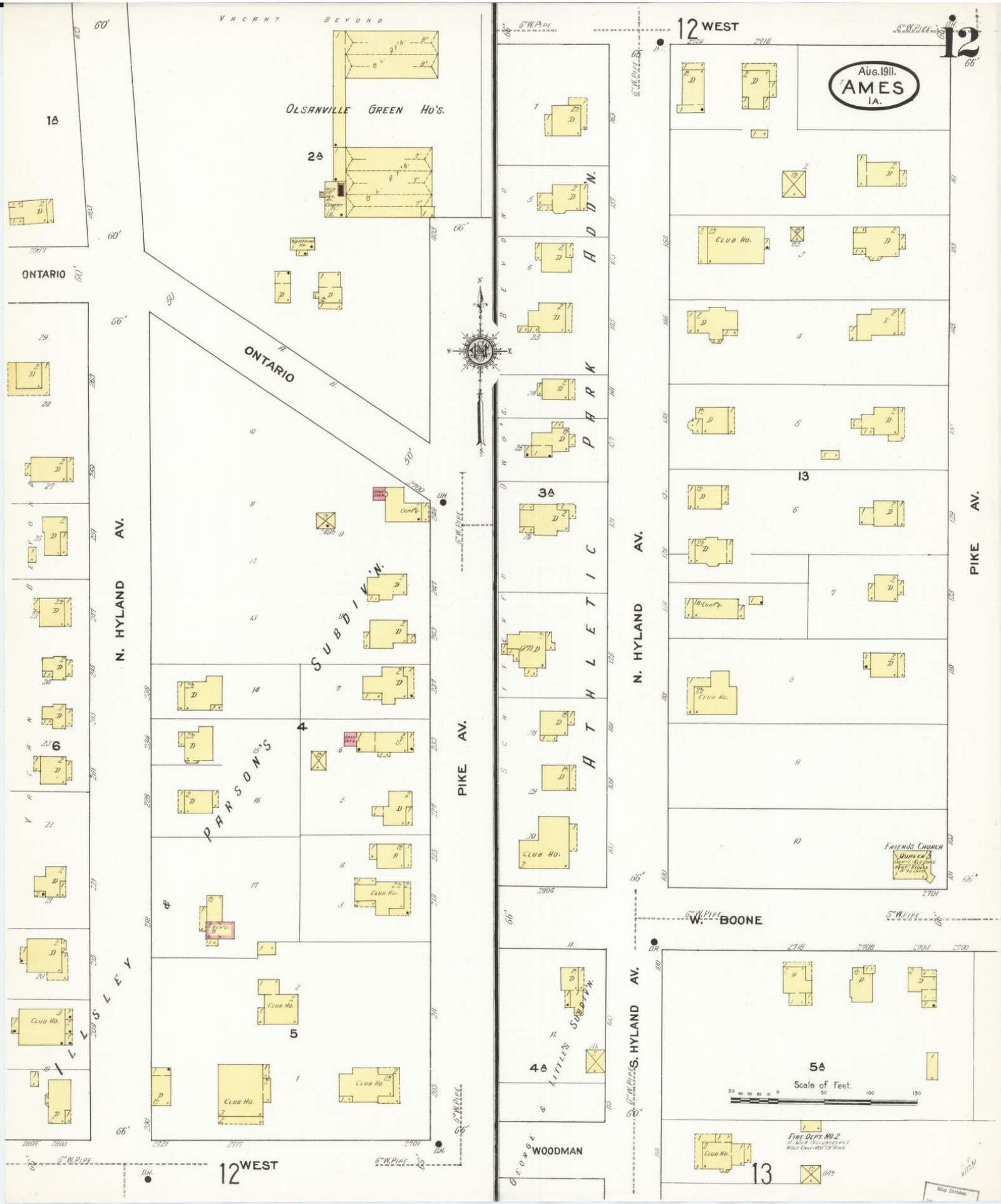
SUMNER AV.

HIGH AV.

10

S.W. 2nd St.

Map Division
Library of Congress



1A

OLSANVILLE GREEN HO'S.

2A

ONTARIO

ONTARIO

N. HYLAND AV.

SUBDIVISION

PARSONS'S

PIKE AV.

ATHLETIC

N. HYLAND AV.

PIKE AV.

12 WEST

12

Aug. 1911.
AMES
IA.

3A

13

FRIENDS CHURCH
QUINCY
WOMEN'S SOCIETY
MUSIC ROOM
BIBLE SCHOOL

W. BOONE

S. W. PARRIS, HYLAND AV.

4A

LITTLE'S SUBDIVISION

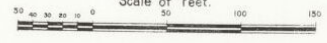
GEORGE WOODMAN

5A

Scale of Feet.

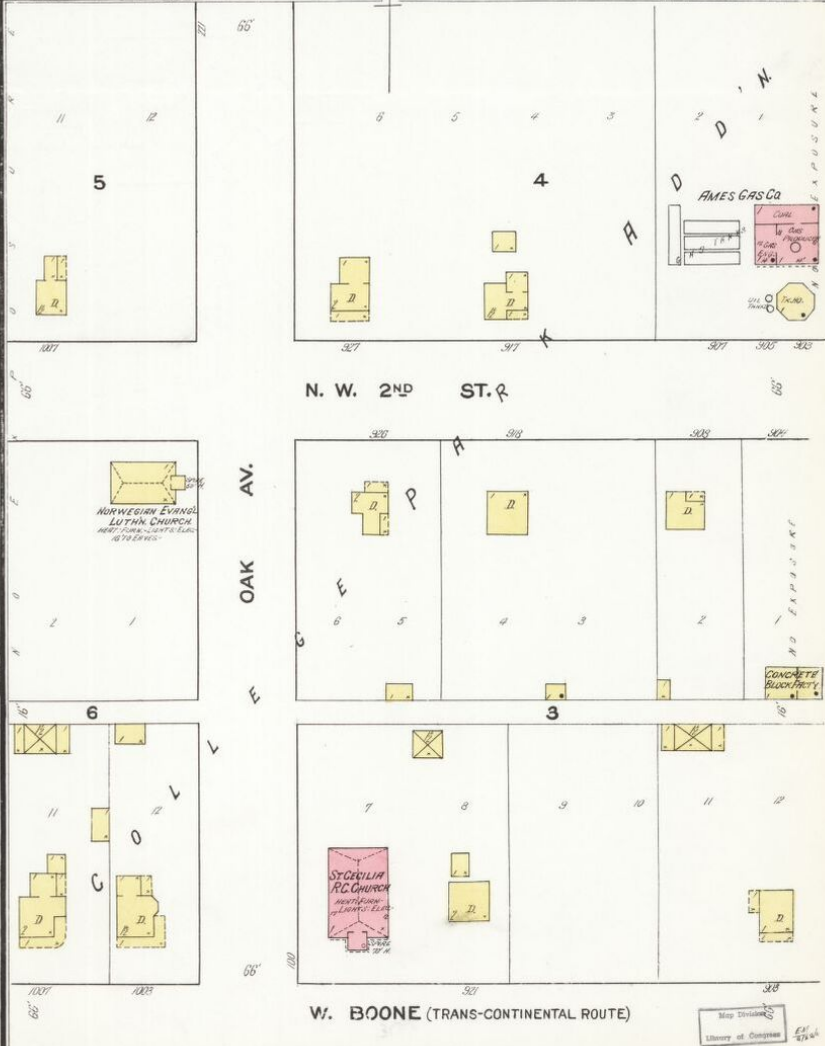
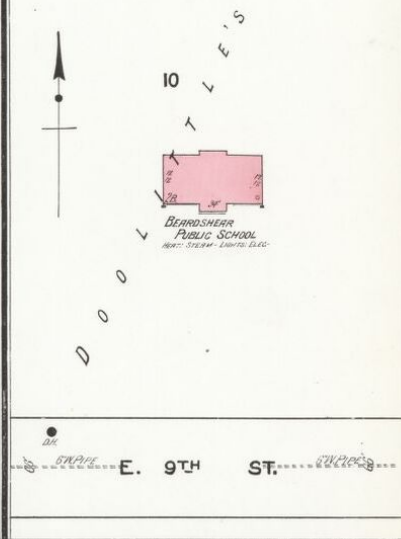
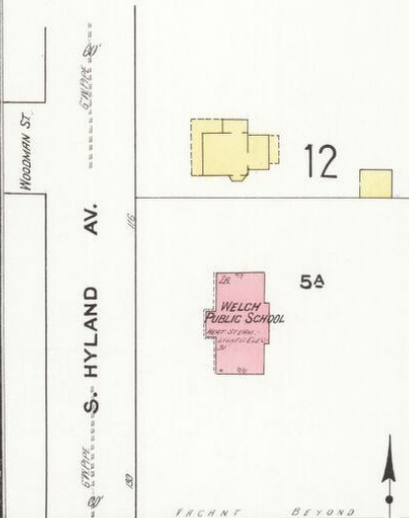
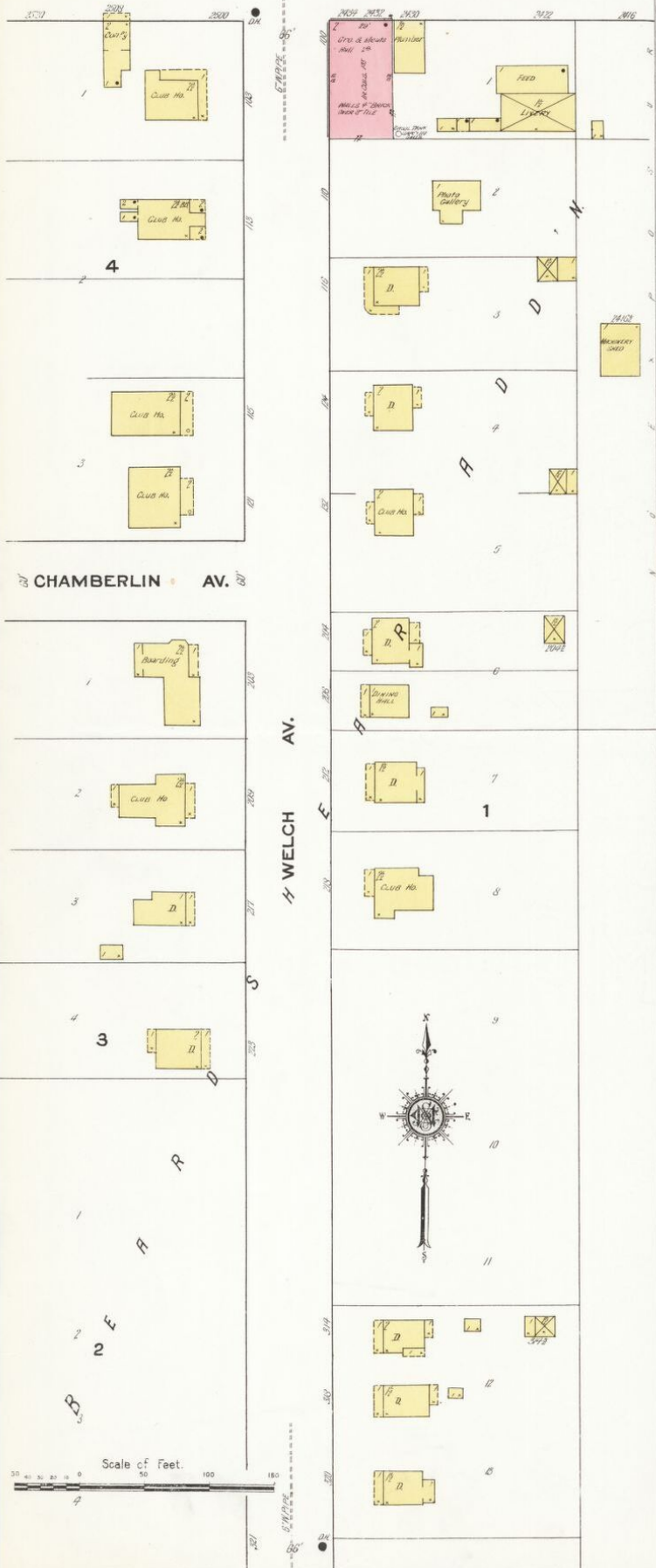
FIRE DEPT. NO. 2
B. ALAN VOLUNTEERS
MUSIC ROOM

13



W. BOONE (TRANS-CONTINENTAL ROUTE)

13
Aug. 1911.
AMES
IA.
A D D N



W. BOONE (TRANS-CONTINENTAL ROUTE)

Map Shows Library of Congress