

Population, 6500 (DURING SCHOOL YEAR - 11,000) Prevailing Winds W. and N.W.



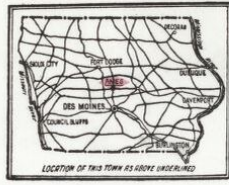
WATER FACILITIES. EAST OF SQUAW CREEK.

Gravity and direct pressure system of water works under municipal ownership. Gravity supply from two wells, one 6' and one 10' deep. One Panola duplex pump (3'-5') capy 355 gals. per min. operated by 30 H.P. electric motor and one Downing duplex pump (3'-4') capy 300 gals. per min. operated by 20 H.P. electric motor. Both pumps draw from wells and supply reservoir of 100,000 gals. capy. Water pumped from reservoir to 50,000 gall. gravity tank elev. 85 ft. on steel trestle, 1/2 mi. S.W. above Main St. or directly into mains by one Viking single stage centrifugal pump, capy 300 gals. per min. operated by 10 H.P. electric motor. One Marsh single stage centrifugal pump capy 400 gals. per min. operated by 30 H.P. electric motor and one Underwriters steam fire pump (14'-10 1/2") capy 600 gals. per min.

WEST OF SQUAW CREEK. All mains and hydrants outside college grounds owned by city and supplied by low pressure State College Water Works. Water supply from three wells, one 6' and two 10' deep. Water pumped from wells into filtering plant by three Gray centrifugal pumps capy 300 gals. each per min. operated by two 25 H.P. and one 30 H.P. electric motor. From filtering plant water flows by gravity into reservoir of 50,000 gals. capy and is then pumped by one Buffalo compound duplex steam pump (16'-10 1/2") capy 1000 gals. per min. directly into mains and to gravity tank of 100,000 gals. capy elevated 85 ft. on steel trestle. One Denning steam pump (15'-8") capy 60 gals. per min. one American steam pump (10'-21 1/2") capy 325 gals. per min. Hand operated valve gravity tank can shut off tank and direct pressure from Buffalo, Denning and American pumps be supplied. Fire alarm system installed in 1915. Hot mains laid about 1922. 3" double city hydrants and 2 1/2" private double hydrants. Average pressure 45 lbs. per sq. inch, average daily consumption 12 million gals.

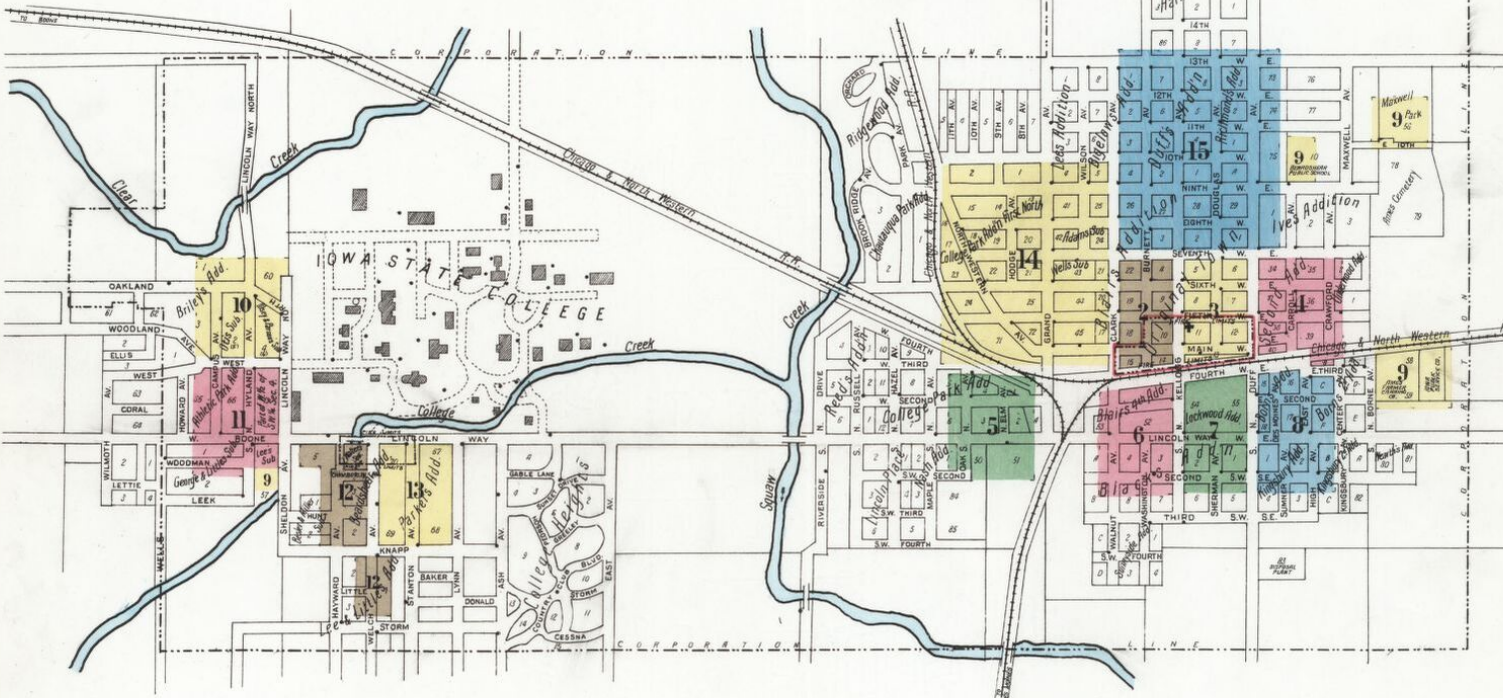
FIRE DEPARTMENT

Two fully paid men, 11 volunteers. One American-La France triple combination 105 H.P. auto truck with 350 gal. pump operated by auto engine, 40 gal. chemical tank, 200 ft. W. hose) hose and 100 ft. 2 1/2" cotton, rubber lined hose with 1300 ft. 2 1/2" C.I. hose in reserve. Fire alarm whistle on electric light plant. Fire alarm system installed in 1915. Hot mains laid about 1922. 3" double city hydrants and 2 1/2" private double hydrants. Average pressure 45 lbs. per sq. inch, average daily consumption 12 million gals. Streets paved. Public lights electric.



KEY: Includes symbols for various building types, streets, and landmarks. Legend items include: FIRE STATION, PUBLIC LIBRARY, AMES PRODUCE CO., PURE ICE CO., STEAM LAUNDRY, STOCK YARDS, BEARDSHEAR PUBLIC SCHOOL, CEDAR RAPIDS OIL CO., CENTRAL PUBLIC SCHOOL, C. & N. W. R. R. FREIGHT DEPOT, PASSENGER DEPOT, CITY ELECTRIC LIGHT AND POWER PLANT, WATERWORKS, TANKS AND WAREHOUSES, CROOK'S FEED YARD, DOUGLAS HOTEL, EDWARDS COAL AND ICE CO., EPISCOPAL STUDENTS CENTER, FIRE DEPARTMENT, FIRST BAPTIST CHURCH, CHRISTIAN CHURCH, CONGREGATIONAL CHURCH, METHODIST EPISCOPAL CHURCH, FT. D. D. & S. R. R. ELECTRIC CAR BARN AND REPAIR SHOP, FRISBIE HOUSE CONGREGATIONAL STUDENTS CENTER, GREELY, MARY, MEMORIAL HOSPITAL, JOHN'S PROTESTANT EPISCOPAL CHURCH, ST. CECILIA ROMAN CATHOLIC CHURCH, MUNN-HUNN HOTEL, SPAHN & ROSE LUMBER CO., LUM. SHEDS, & C., WELCH PUBLIC SCHOOL, WESLEY HOUSE METHODIST STUDENTS CENTER.

AMES STORY COUNTY IOWA Sanborn Map Company SCALE 50 FT. TO AN INCH OCT. 1920 Copyright 1921 by the Sanborn Map Co. FEB 5 1921



INDEX

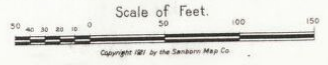
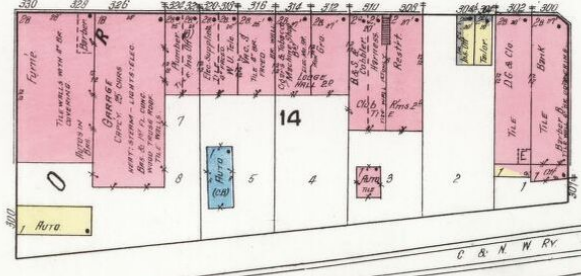
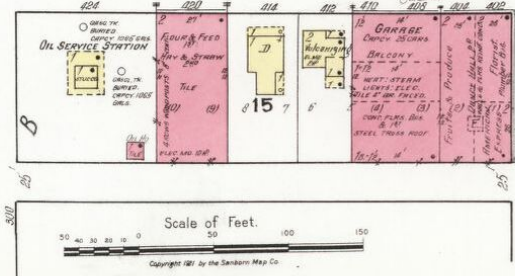
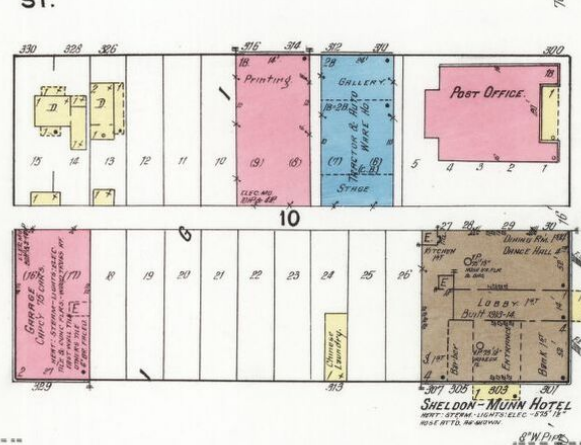
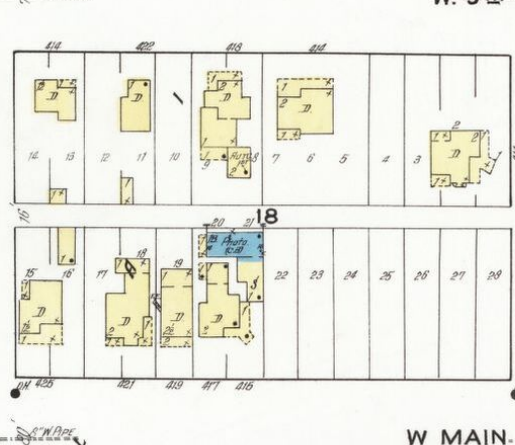
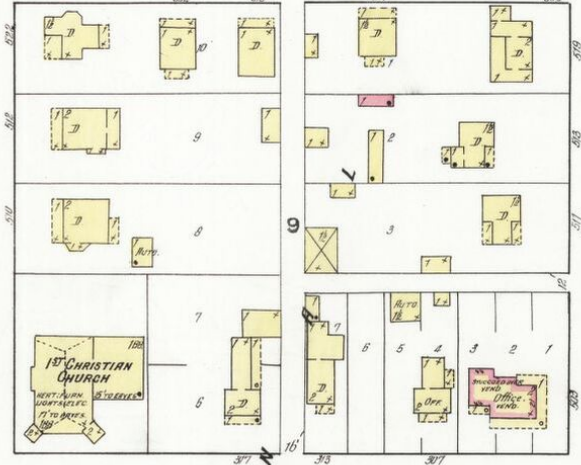
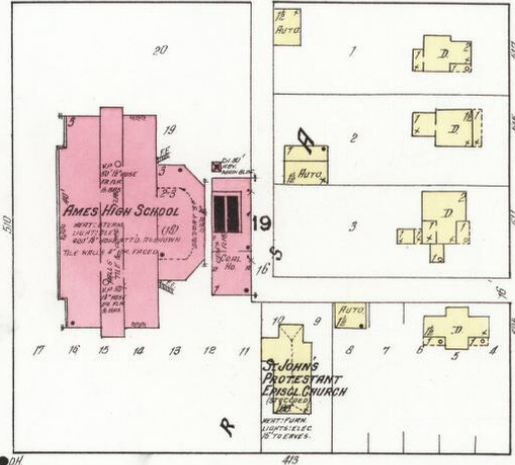
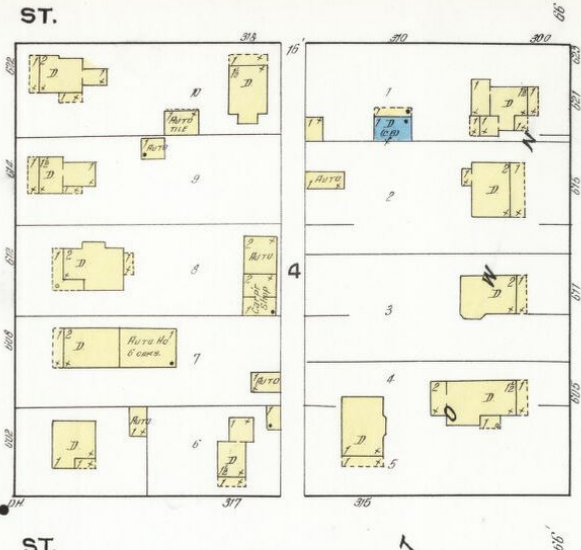
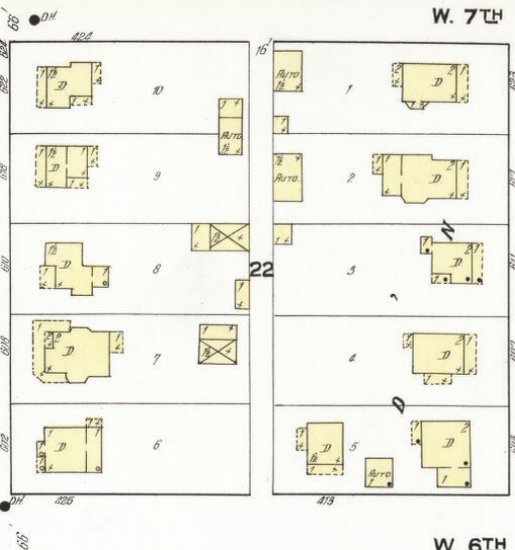
Table with columns for Street Name and Index Number. Lists streets from A to Z and their corresponding index numbers. Includes a 'SPECIALS' section for specific landmarks.

* Indicates only one side of Street shown.





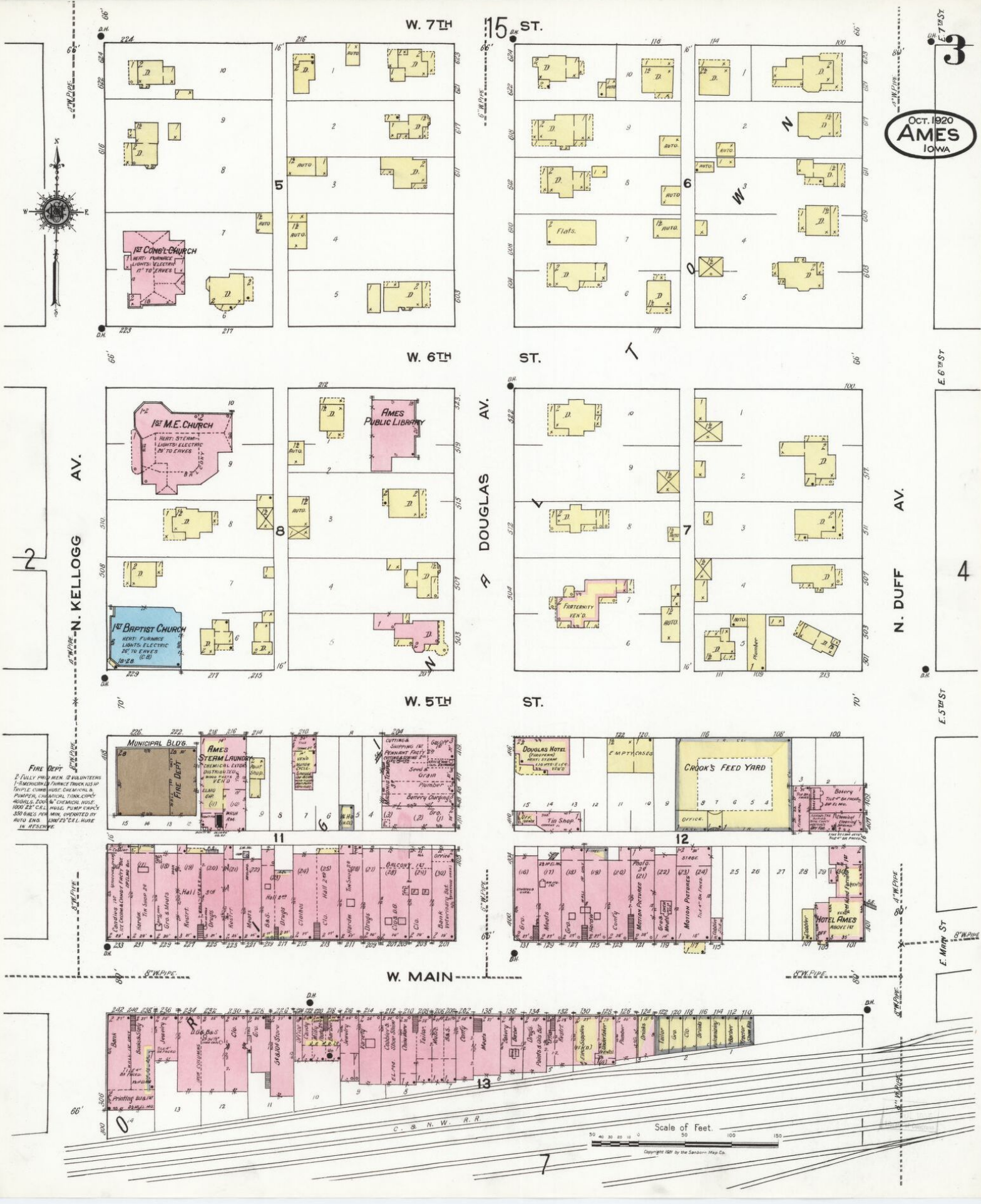
OCT. 1920
AMES
IOWA



Copyright 1921 by the Sanborn Map Co.



OCT. 1920
AMES
IOWA



FIRE DEPT
FULLY EQUIPPED VOLUNTEERS
1. REMEDIATION PUMP TRUCKS UP
TO 12' LIFT. COMB. HOSE, CHAINSAW &
PUMPER, CHEMICAL TANK, CO2
BOTTLES, ZODIAC CHURNING HOSE,
1000' 2 1/2" C.C. HOSE, PUMP CARRY,
350 GALS. PER MIN. SPENT BY
AUTO ENG. LOWER CELL HOME
IN RESERVE

MUNICIPAL BLDG
AMES LAUNDRY
CUTTING SHOPPING (ST)
REPAIR FACTORY
CROOK'S FEED YARD
Bakery
HOTEL AMES ABOVE 1ST

DOUGLAS HOTEL
CROOK'S FEED YARD
Bakery
HOTEL AMES ABOVE 1ST

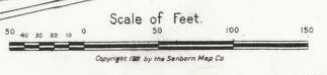
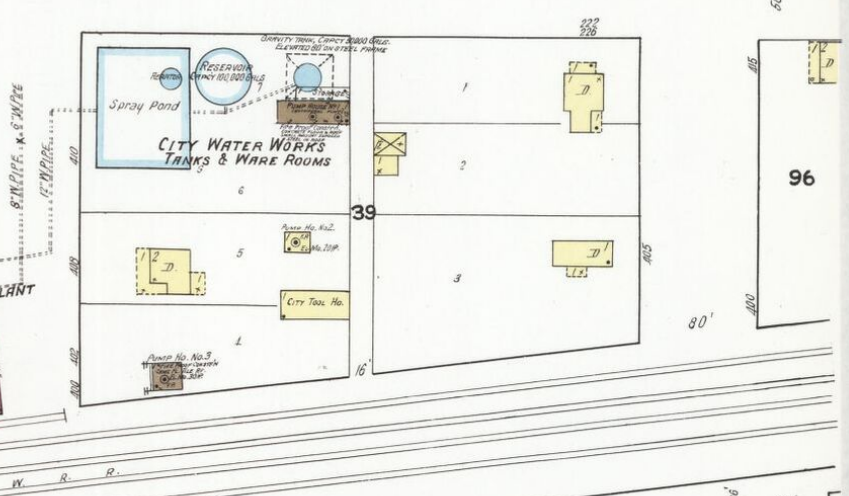
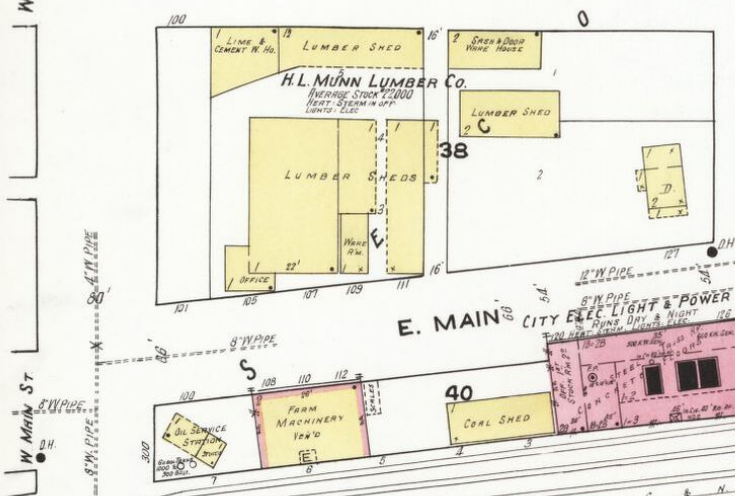
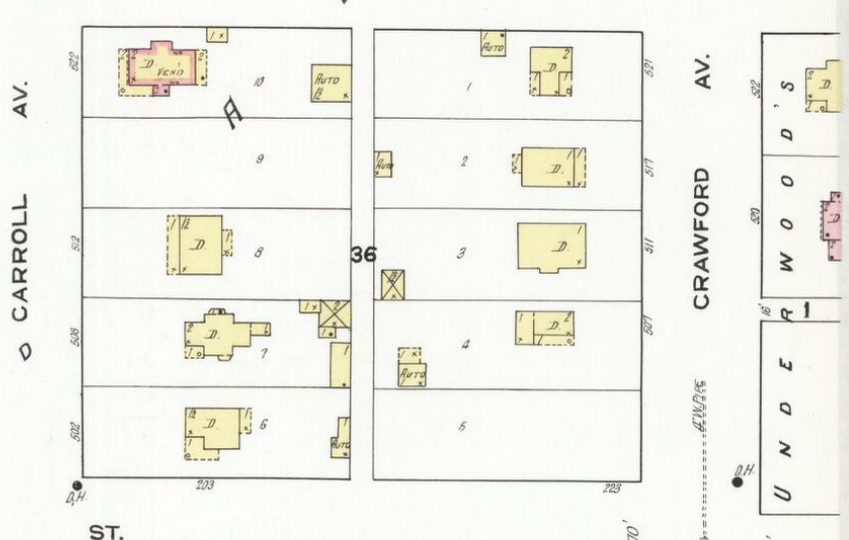
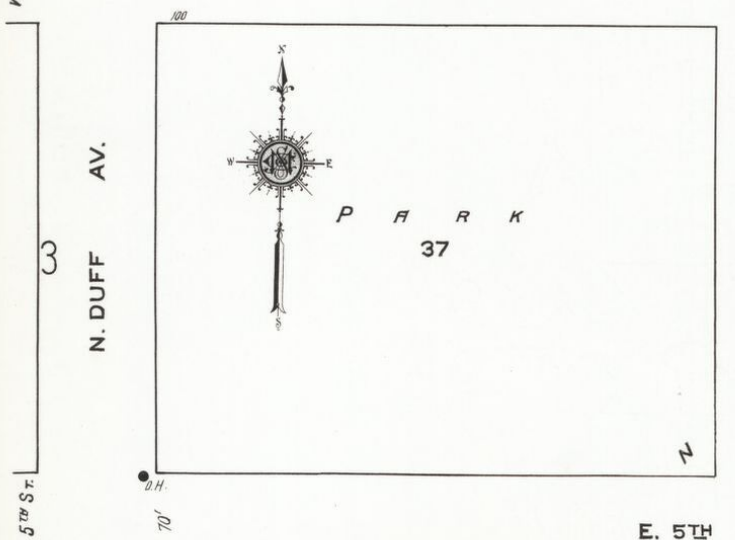
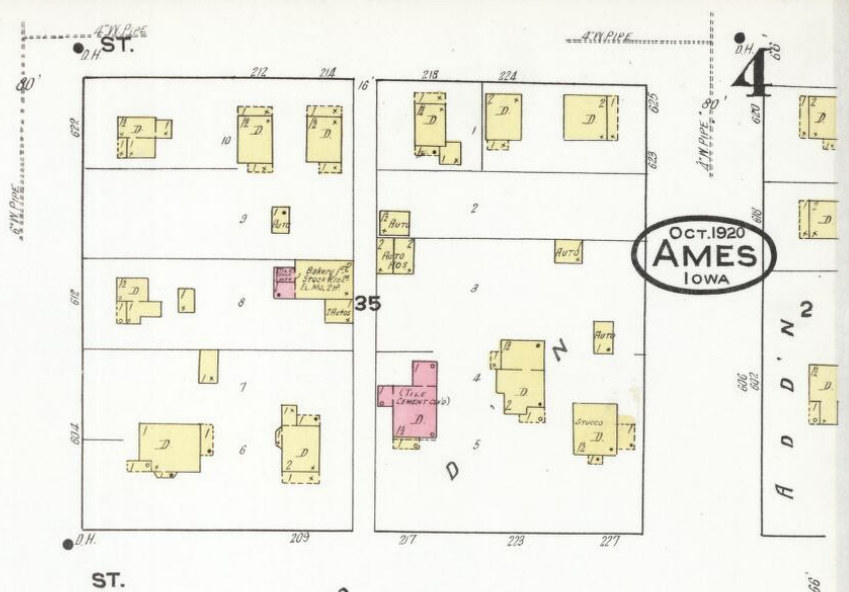
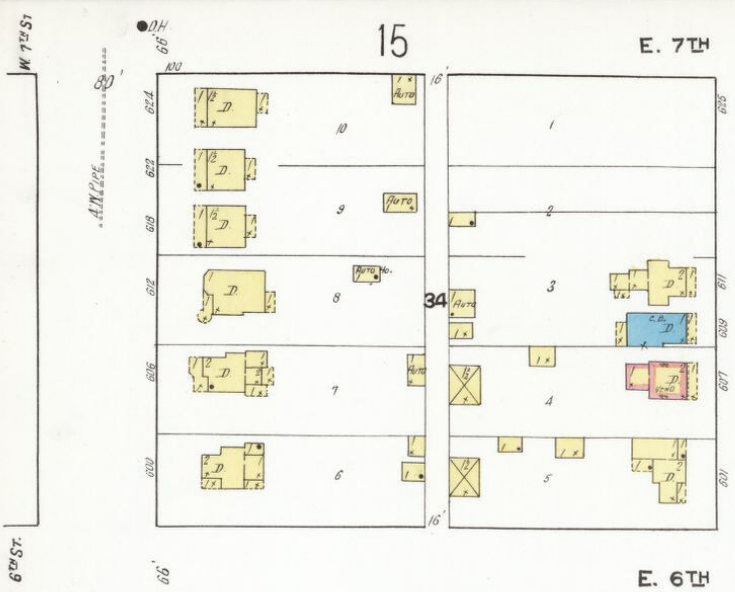
AMES LAUNDRY
CUTTING SHOPPING (ST)
REPAIR FACTORY
CROOK'S FEED YARD
Bakery
HOTEL AMES ABOVE 1ST

DOUGLAS HOTEL
CROOK'S FEED YARD
Bakery
HOTEL AMES ABOVE 1ST

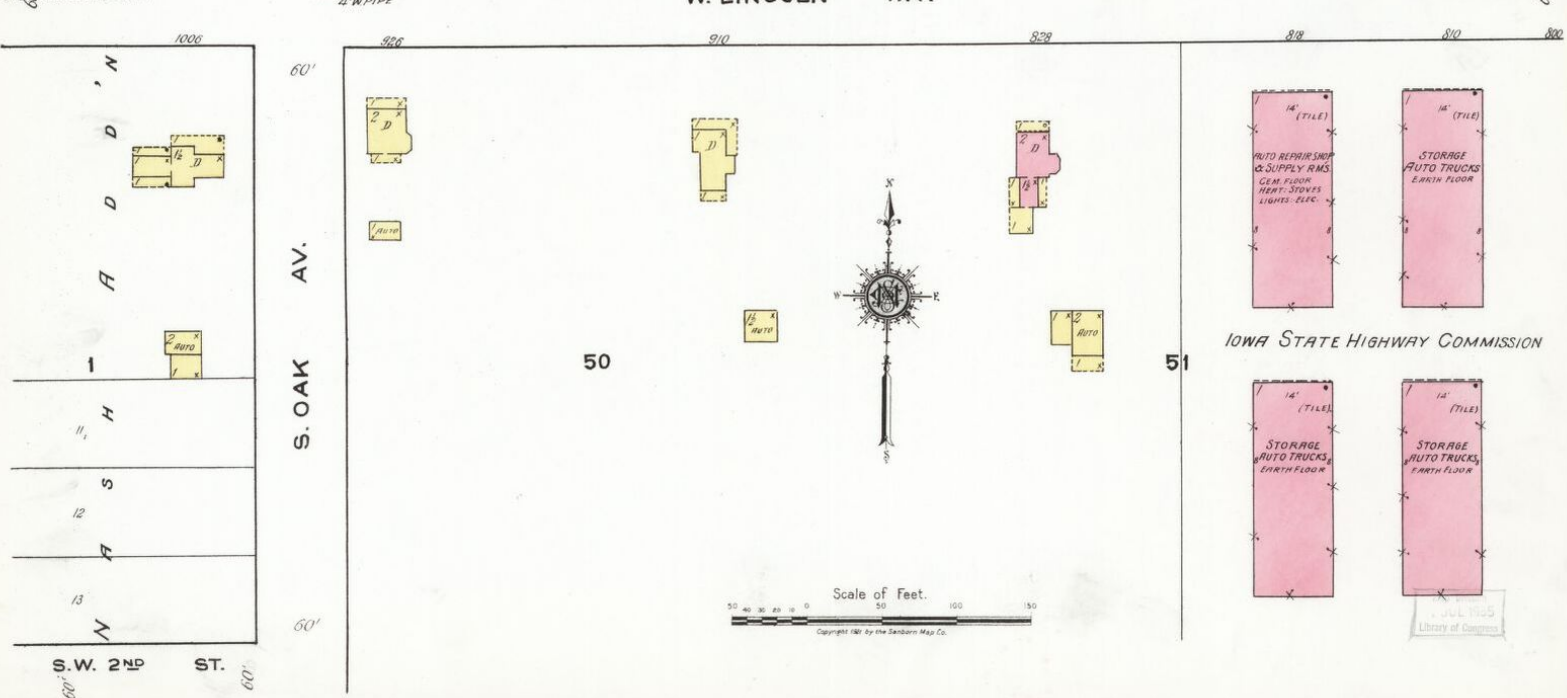
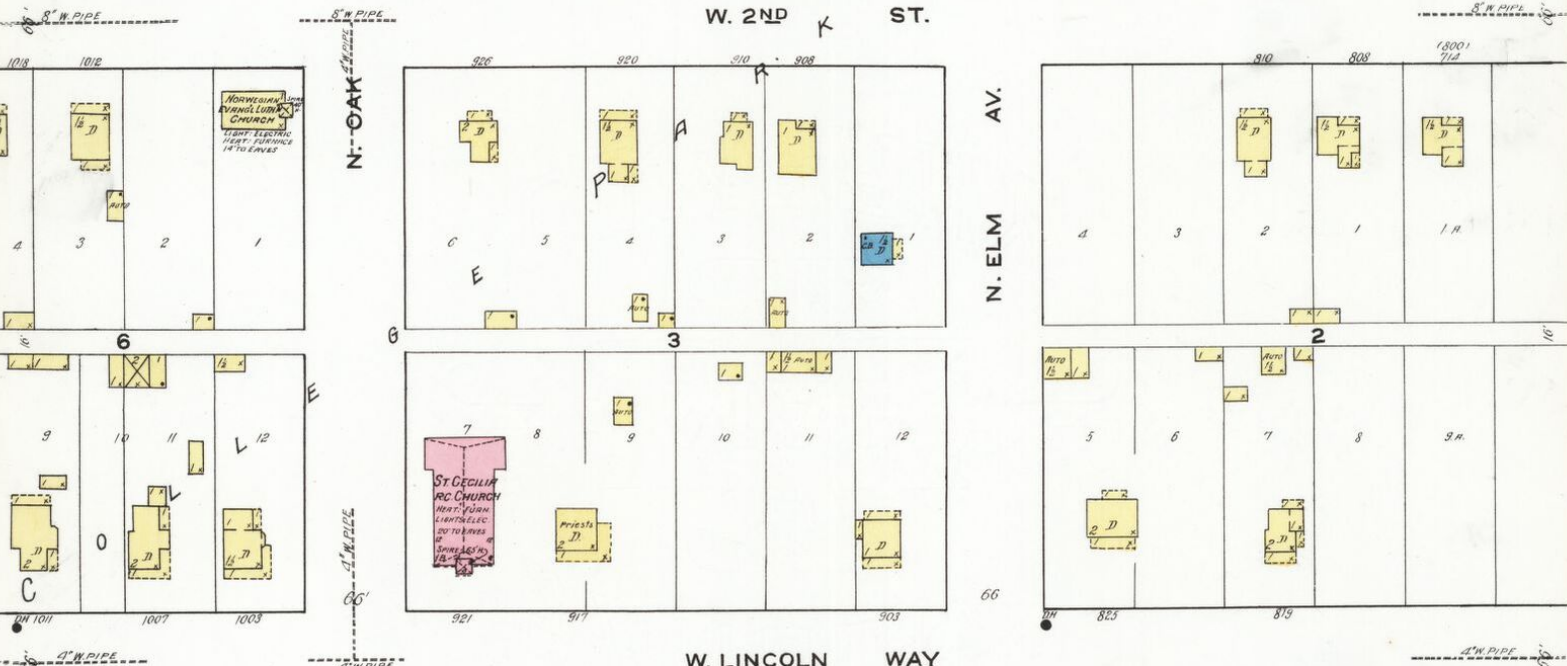
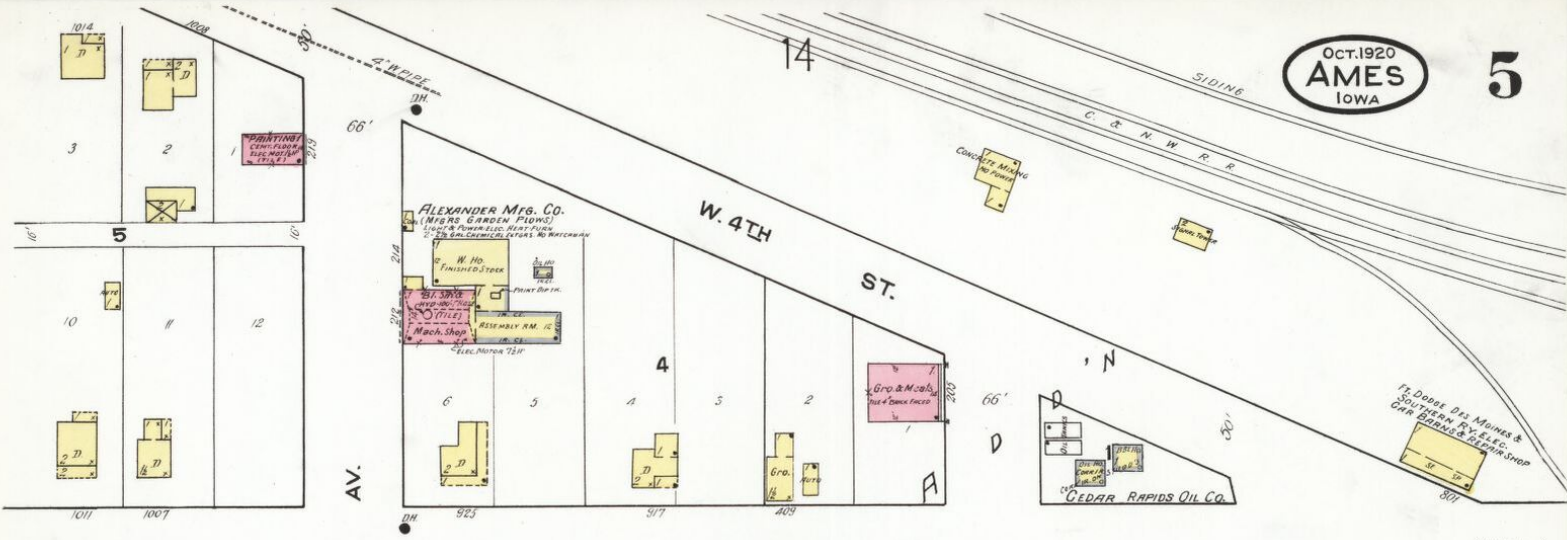
W. MAIN

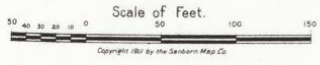
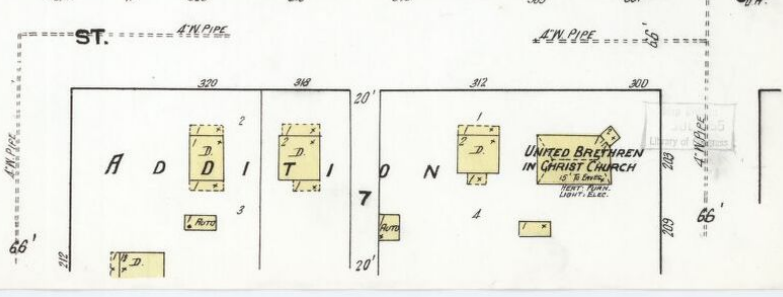
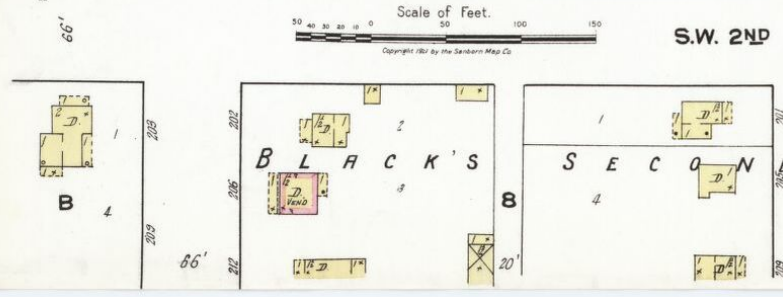
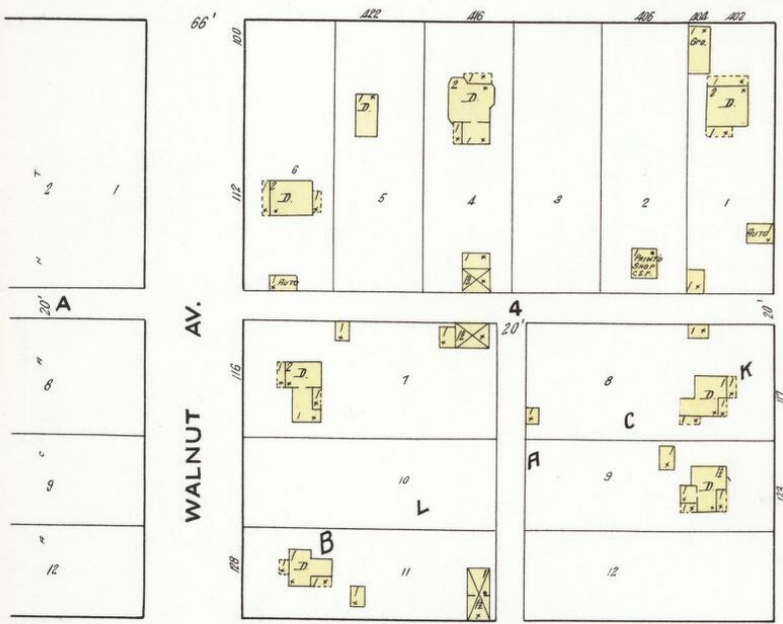
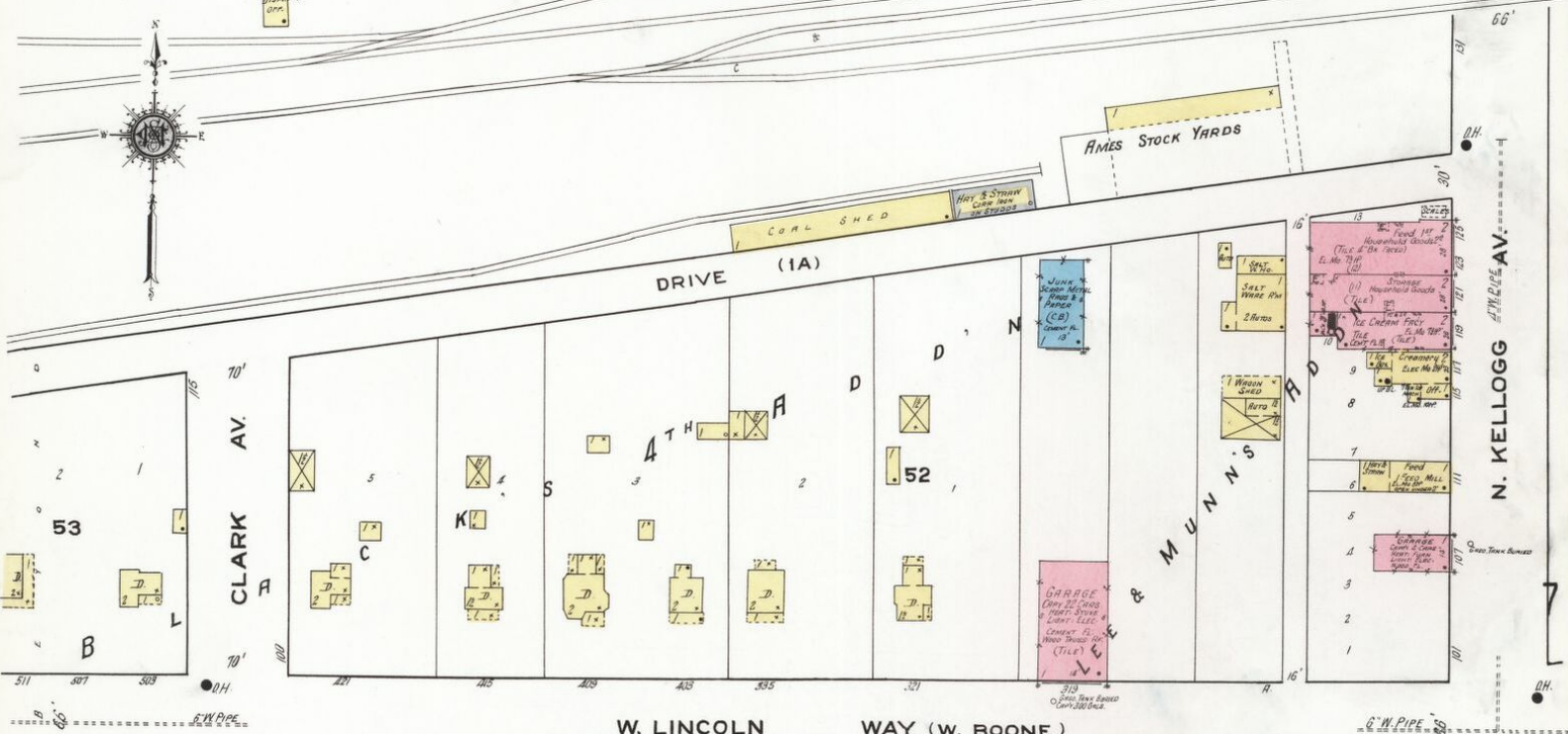
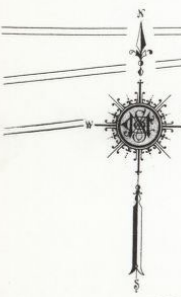
13
C. & N. W. R. R.
Scale of Feet. 0 20 40 60 80 100 120 140 160
Copyright 1920 by the Seshon Map Co.

OCT. 1920
AMES
IOWA



DES MOINES AV



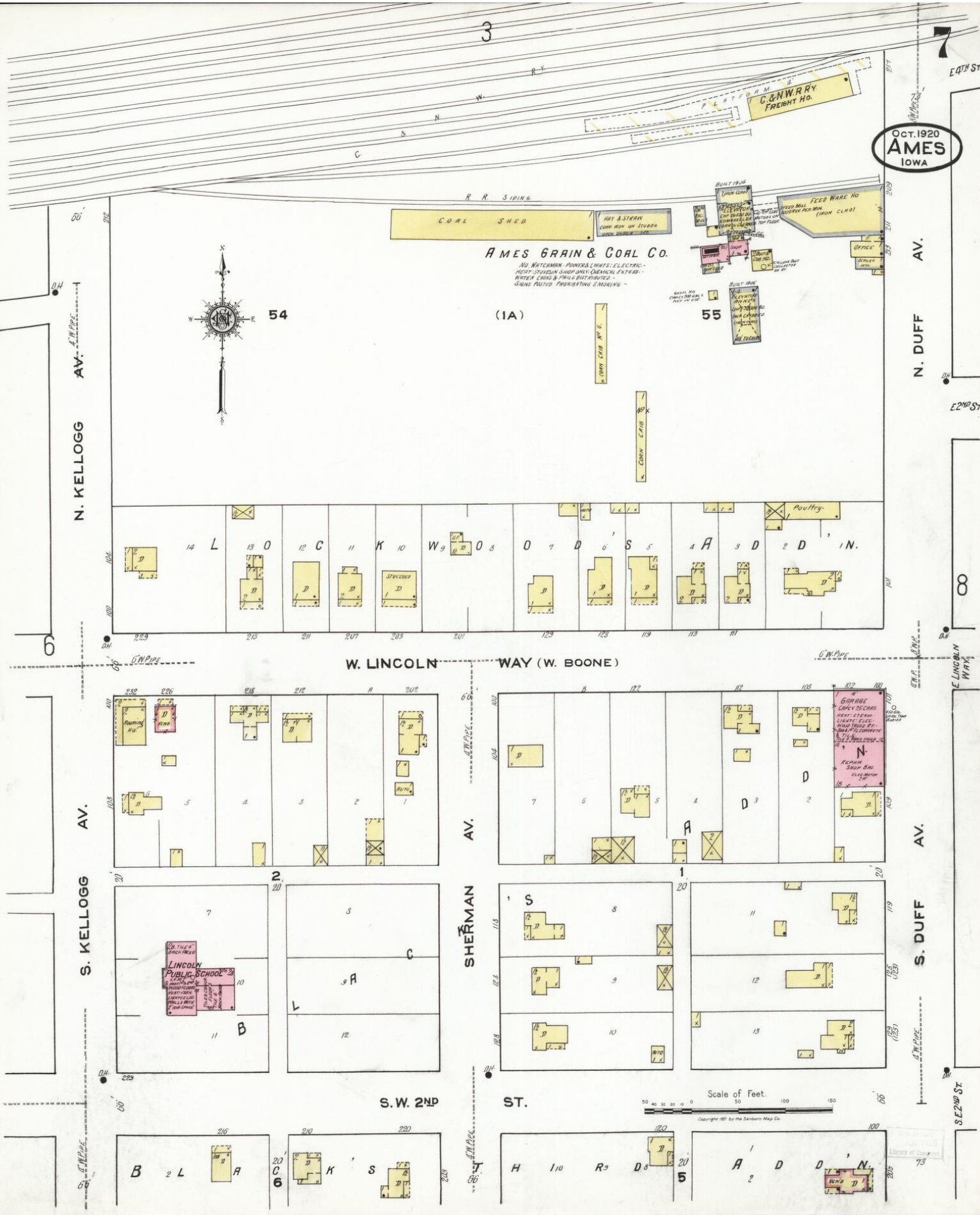


S.W. 2ND

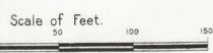
ST.

UNITED BRETHREN
IN CHRIST CHURCH

OCT. 1920
AMES
IOWA



W. LINCOLN WAY (W. BOONE)

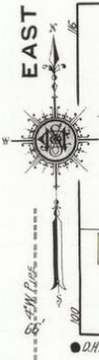


Copyright 1921 by the Johnson Map Co.

Library of Congress



OCT. 1920
AMES
IOWA

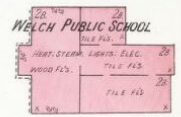


Scale of Feet.
0 50 100 150

Copyright 1921 by the Standard Map Co.

Standard Map Co.
July 1925
Library of Congress

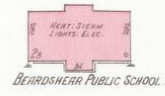
Oct. 1920
AMES
IOWA



WELCH PUBLIC SCHOOL
DICE BLDG.
HEAT, STORM, LIGHTS, ELEC.
PAVED FLS.
TILE FLS.
TILE FLS.
57

DOOLITTLE'S ADDN.

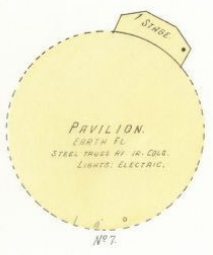
10



BEARDSHEAR PUBLIC SCHOOL.

MAXWELL PARK ASSN.

56



Nº 7.



HORSE SHOW RM.

Nº 5.



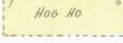
Nº 6.



Nº 3.

CATTLE SHOW RM.

Nº 1.



HOE HO.



Nº 2.

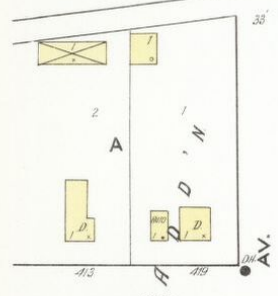
HOE HO.

E. 10TH ST.

C. & N. W. RY.

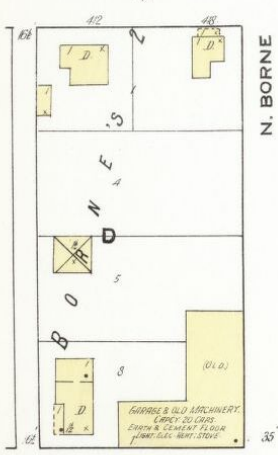
E. 9TH ST.

S. HYLAND AV.

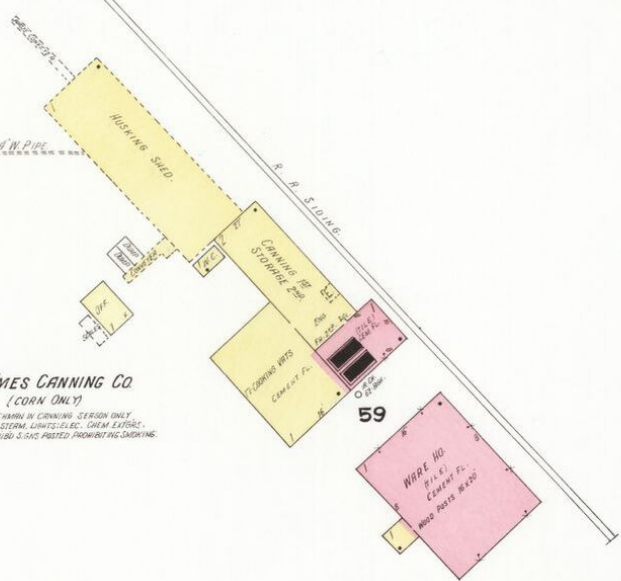


N. BORNE AV.

E. 3RD ST.



E. 2ND ST.

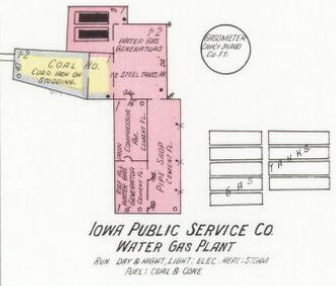


AMES CANNING CO.
(CORN ONLY)
HEAT, STORM IN CANNING; STEAM ONLY
HEAT, STORM, LIGHTS, ELEC. CORN. ELEVATOR.
DISTRIBUTION GAS PIPING PROMINENT SHADINGS.

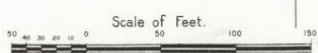
59



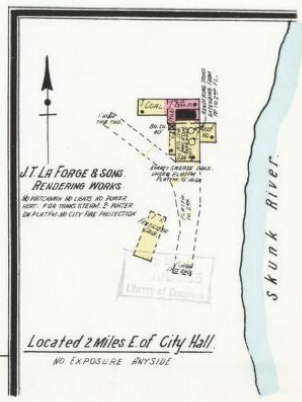
WARE HO.
(W. C.)
CORNER FL.
WOOD SHED 18' x 40'



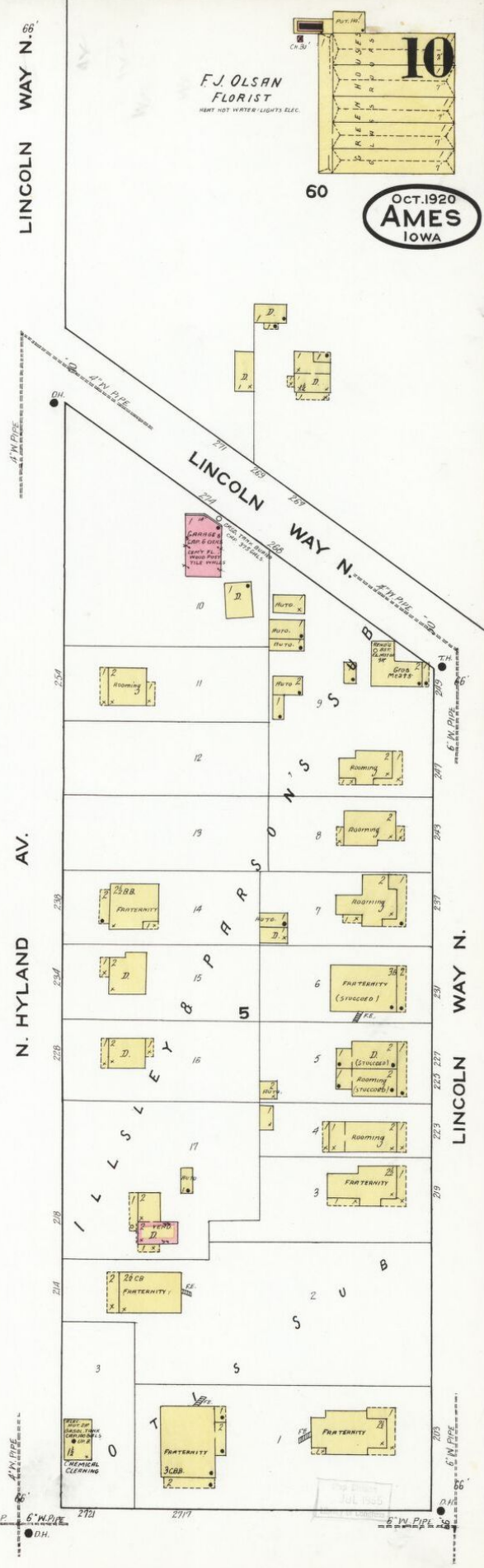
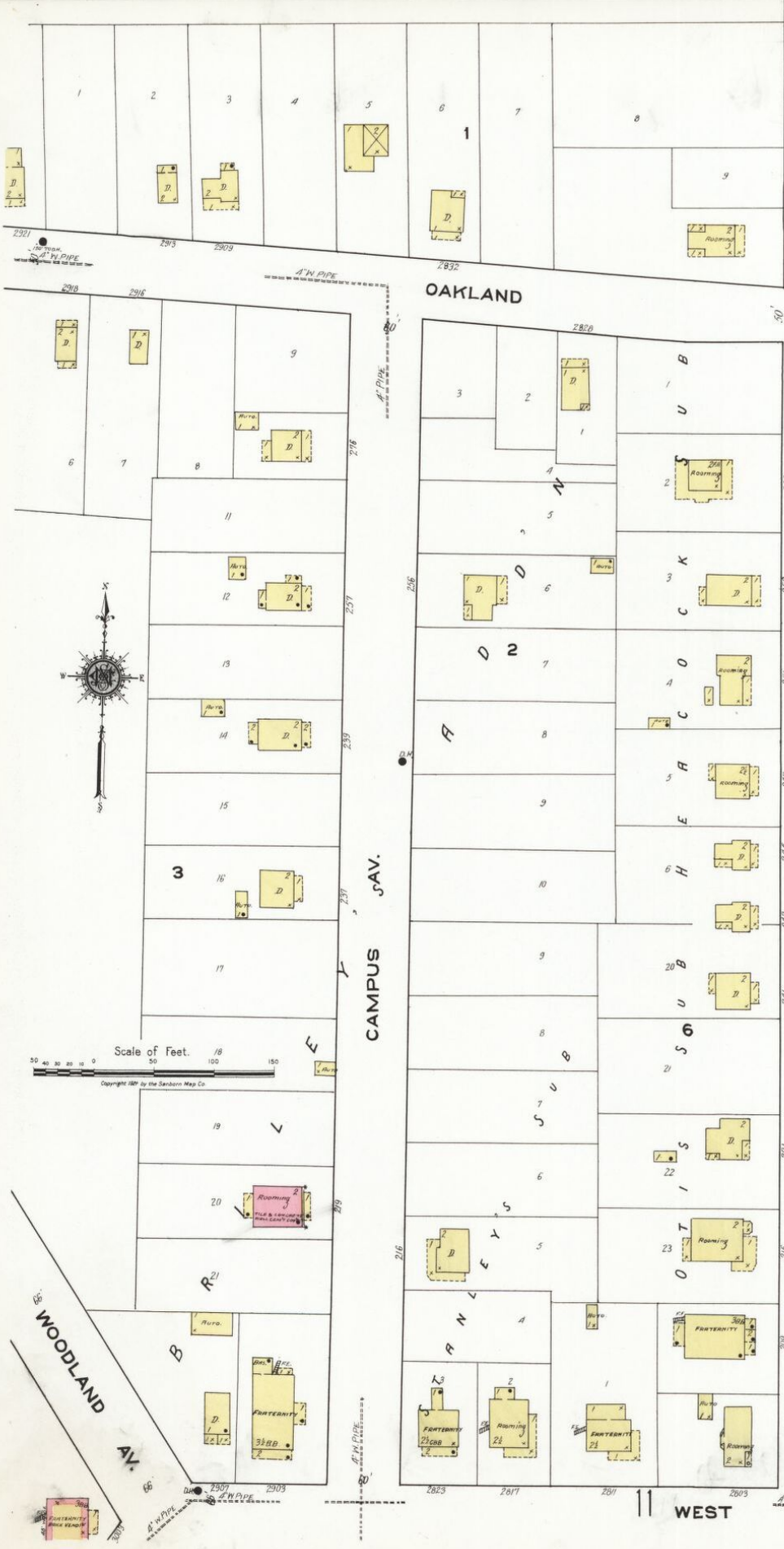
IOWA PUBLIC SERVICE CO.
WATER GAS PLANT
HEAT, STORM, LIGHT, ELEC. HEAT, STORM
PURELY CORN & CORN



Copyright 1920 by the Sanborn Map Co.



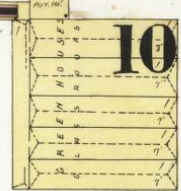
Located 2 Miles E. of City Hall
NO EXPOSURE ANYSIDE



F.J. OLSAN
FLORIST
HEAT HOT WATER LIGHTS ELEC.

OCT. 1920
AMES
IOWA

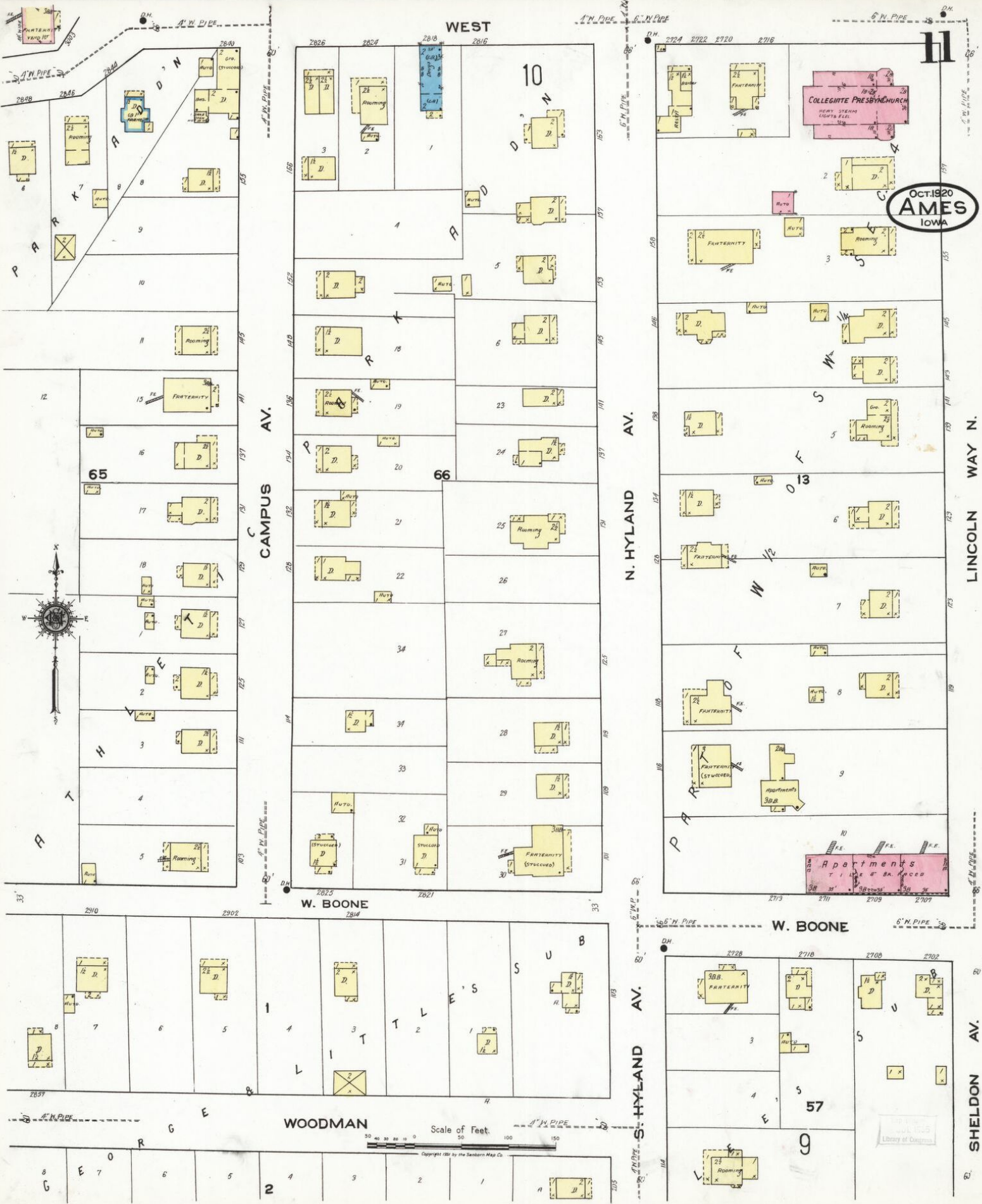
Scale of Feet. 0 50 100 150
Copyright 1920 by the Standard Map Co.



60

11 WEST

JUL 1925



WEST

OCT. 1920
AMES
IOWA

CAMPUS AV.

N. HYLAND AV.

LINCOLN WAY N.

W. BOONE

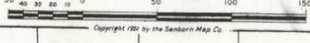
W. BOONE

WOODMAN

S. HYLAND AV.

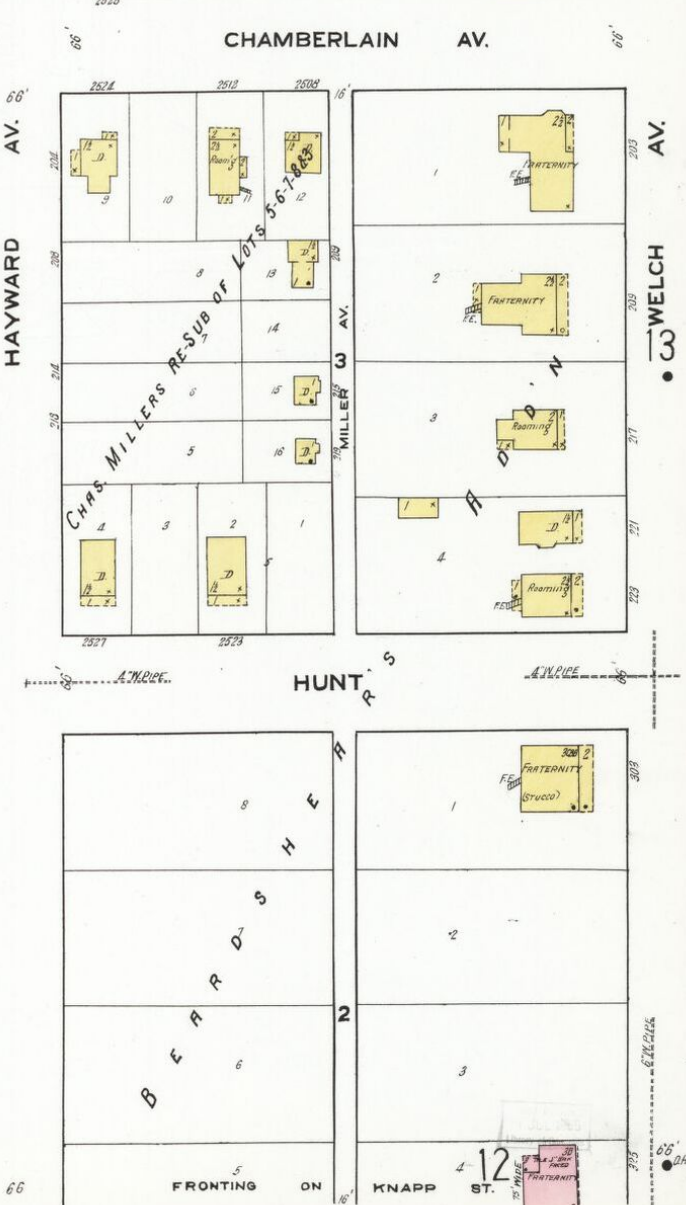
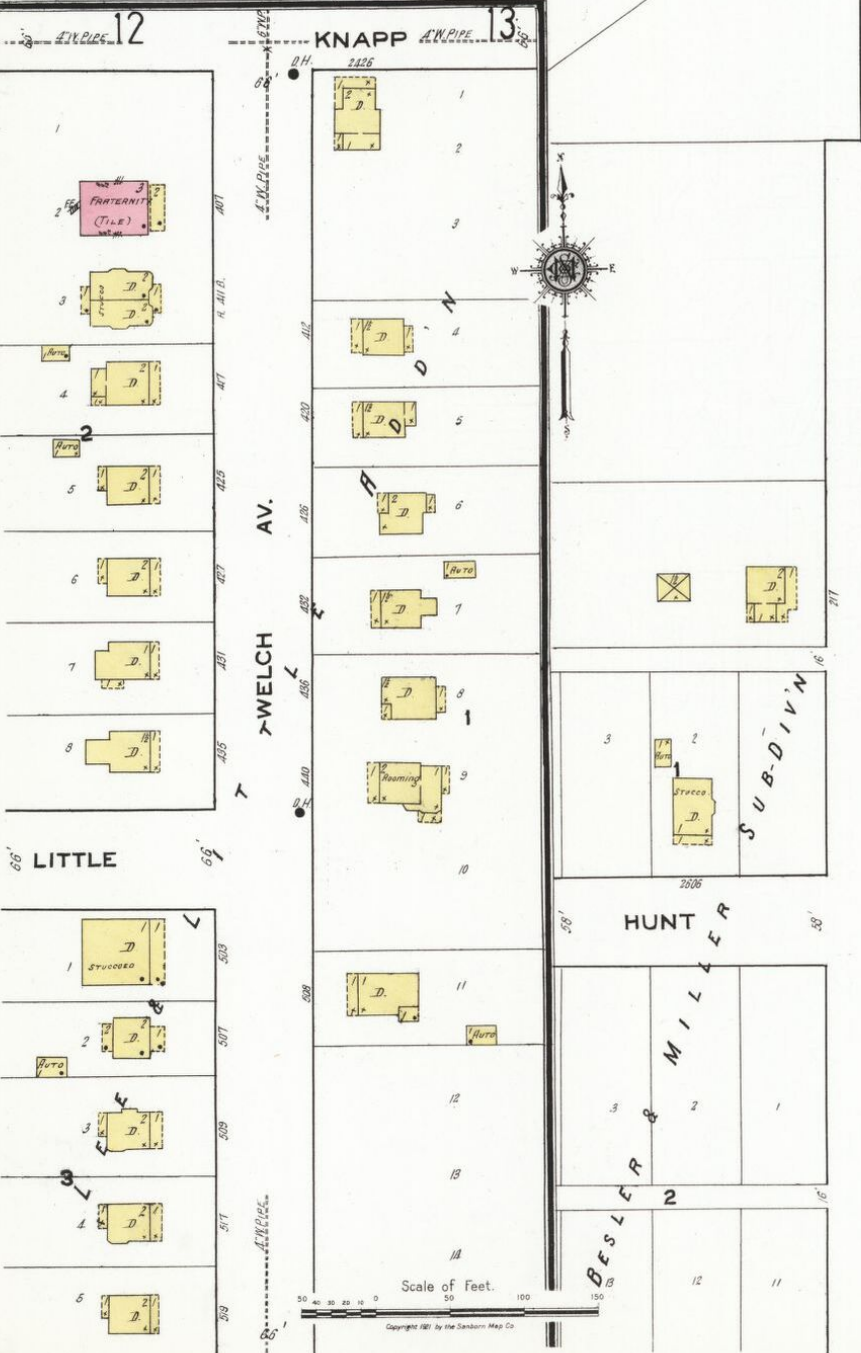
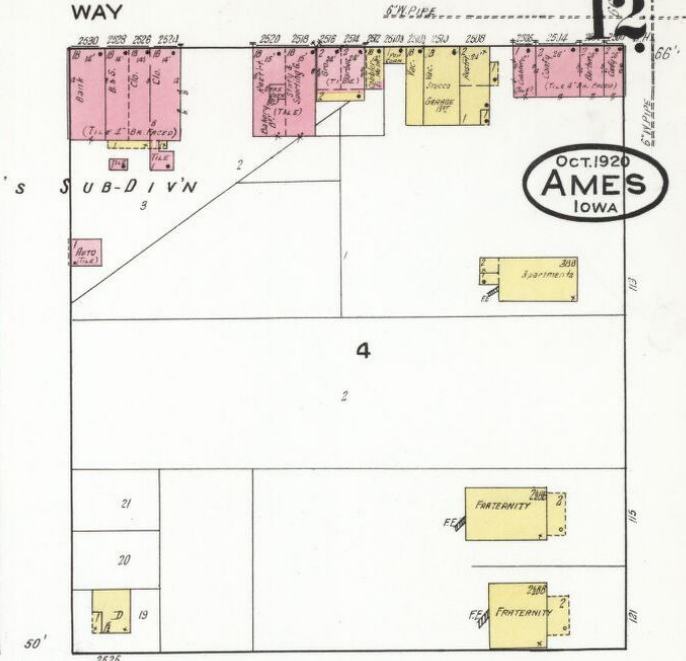
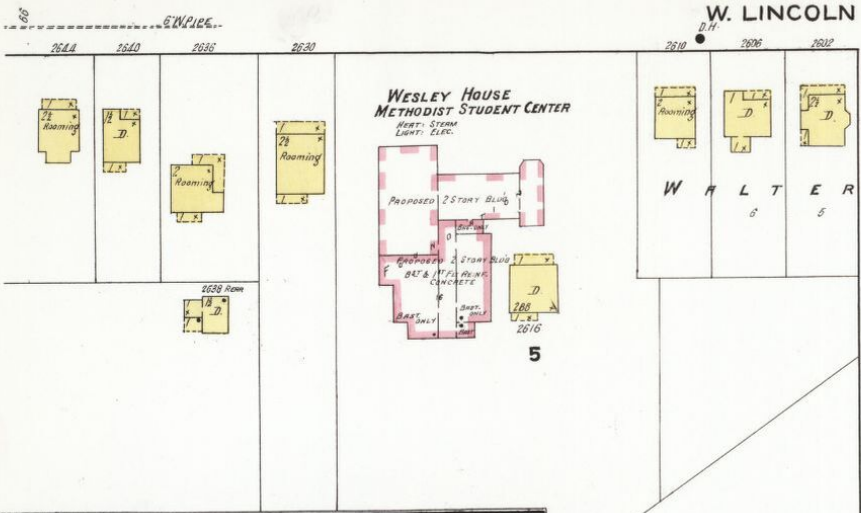
SHELDON AV.

Scale of Feet.



Copyright 1920 by the Sanborn Map Co.

The Ames
Public Library
Library of Design



12

OCT. 1920
AMES
IOWA

66' LITTLE

HAYWARD AV.

CHAMBERLAIN AV.

WELCH AV.

HUNT R.

HUNT

BEARDSHIRE

FRONTING ON KNAPP ST.

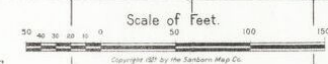
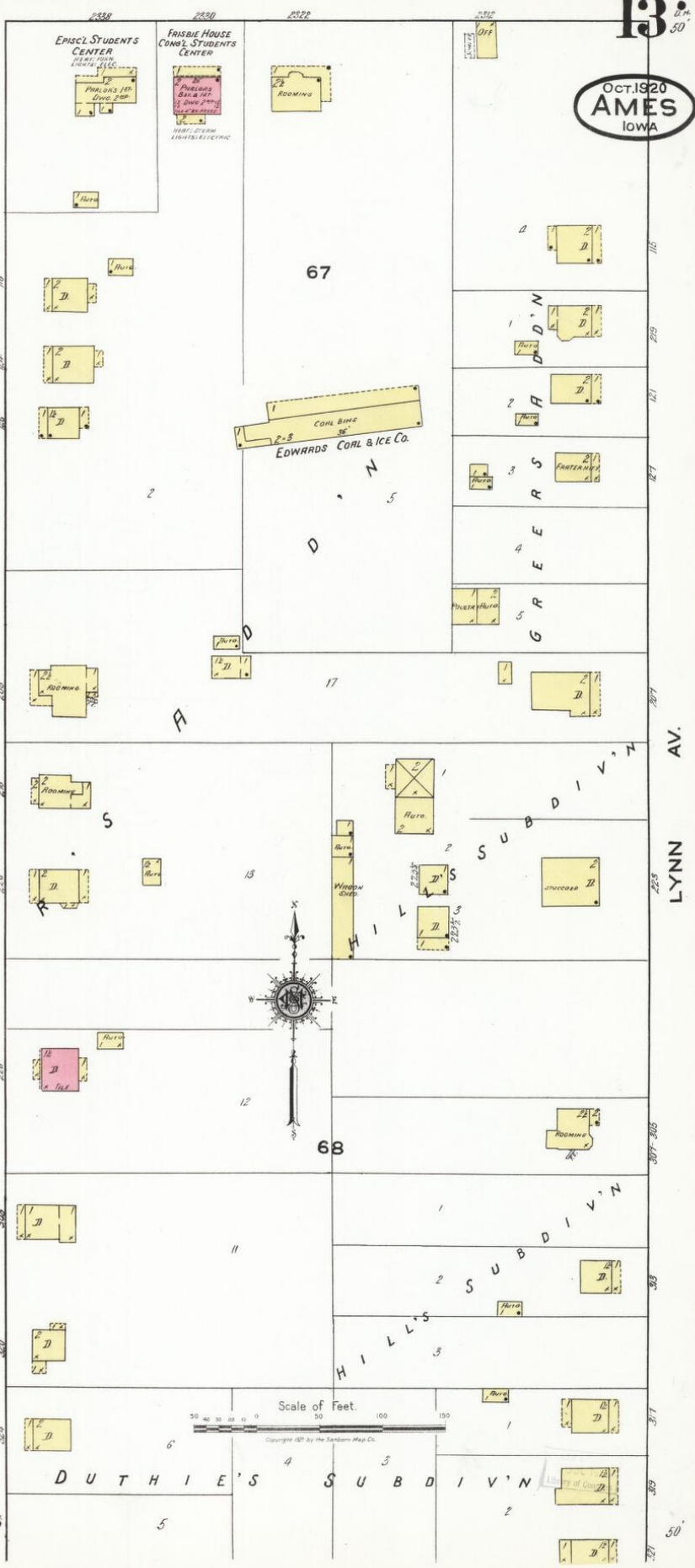
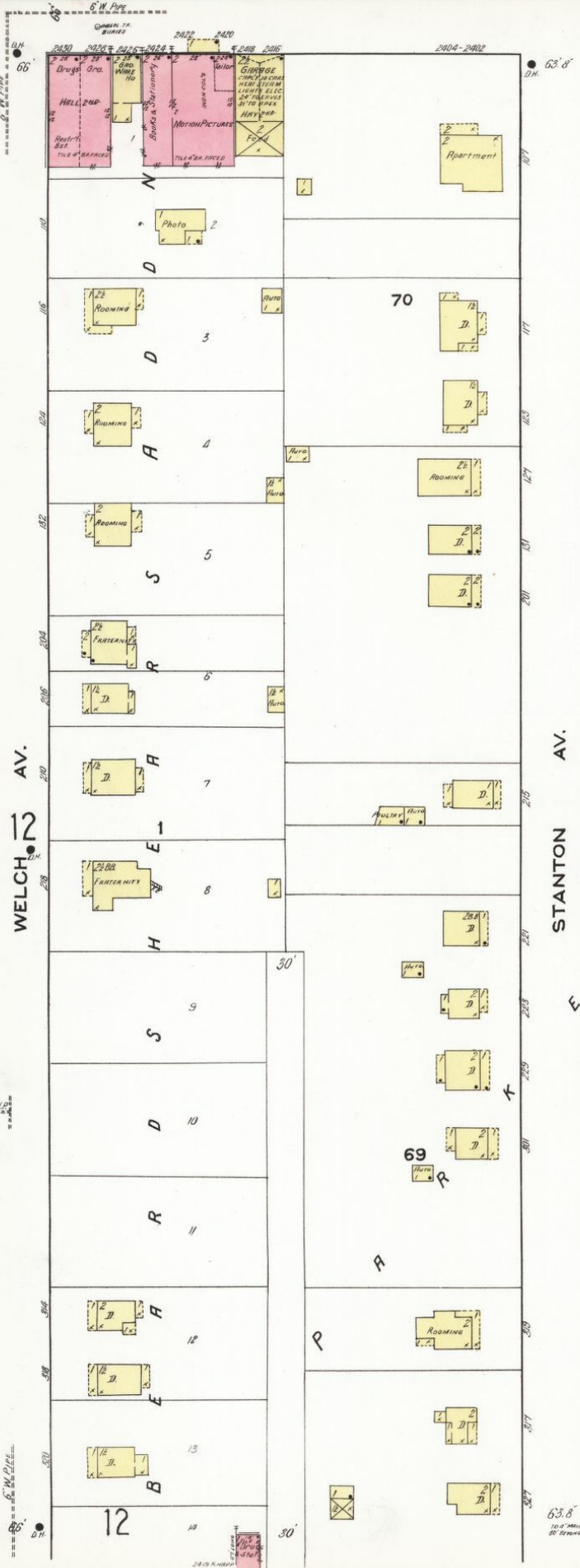
Scale of Feet.

Copyright 1921 by the Sanborn Map Co.

W. LINCOLN WAY

13.50

OCT. 1920
AMES
IOWA



STANTON AV.

LYNN AV.

WELCH AV.

E

T

R

A

P

63.8

10.5' Min. 50' Ground

EDWARDS COAL & ICE CO.

EPISC'L STUDENTS CENTER
FRISBIE HOUSE
CONG'L STUDENTS CENTER

SUBDIVISION

SUBDIVISION

DUTHIE'S SUBDIVISION

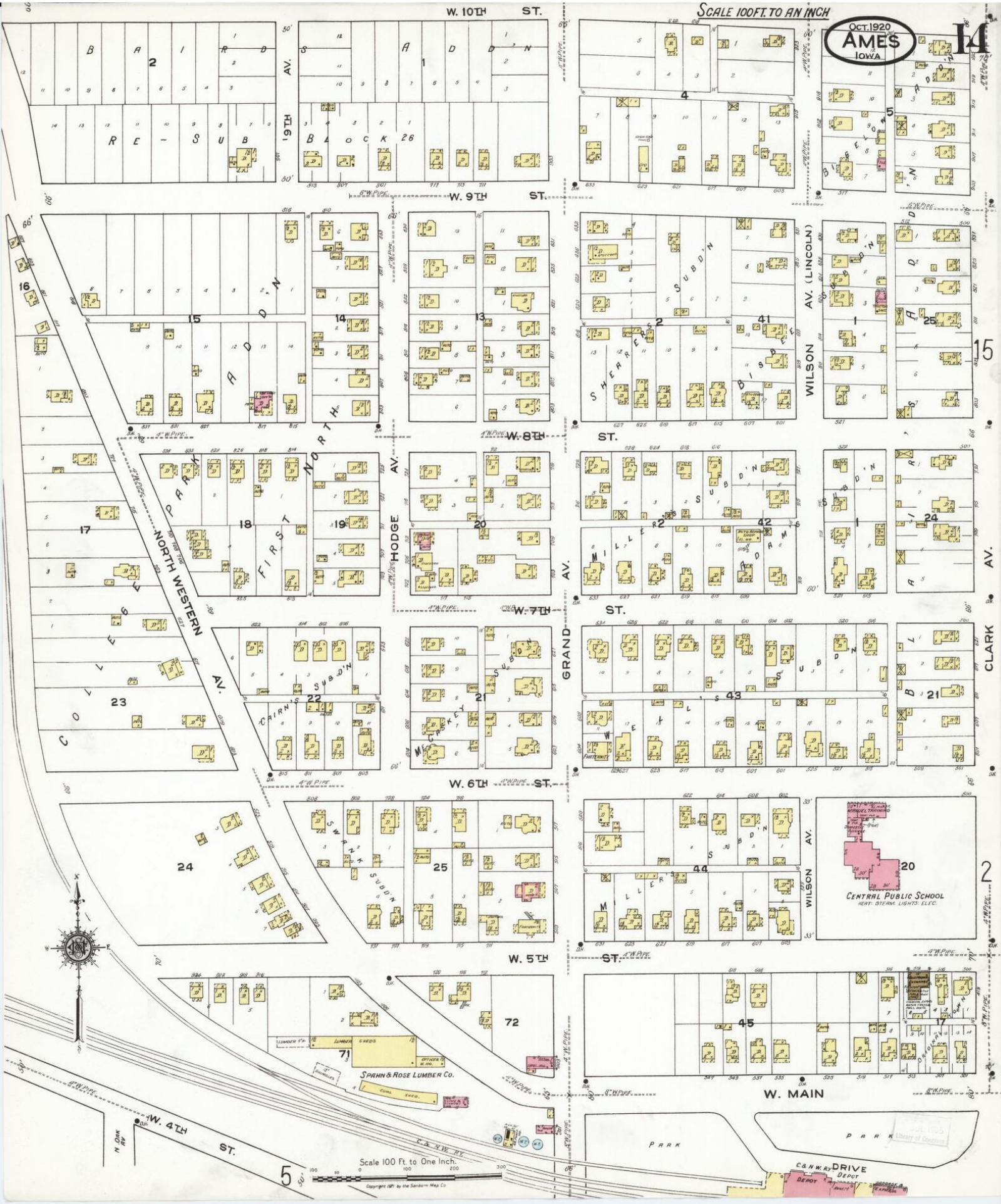


Scale of Feet.

Copyright 1920 by the Standard Map Co.

SCALE 100 FT. TO AN INCH

OCT. 1920
AMES
IOWA



Scale 100 Ft. to One Inch.

Copyright 1921 by the Sanborn Map Co.

SCALE 100 FT. TO AN INCH
W. 13TH ST.

HARMAN'S
W. 13TH ST.

E. 13TH ST. 15

4 73
OCT. 1920
AMES
IOWA

E. 12TH ST. 60

E. 11TH ST. 60

E. 11TH ST. 60

E. 11TH ST. 60

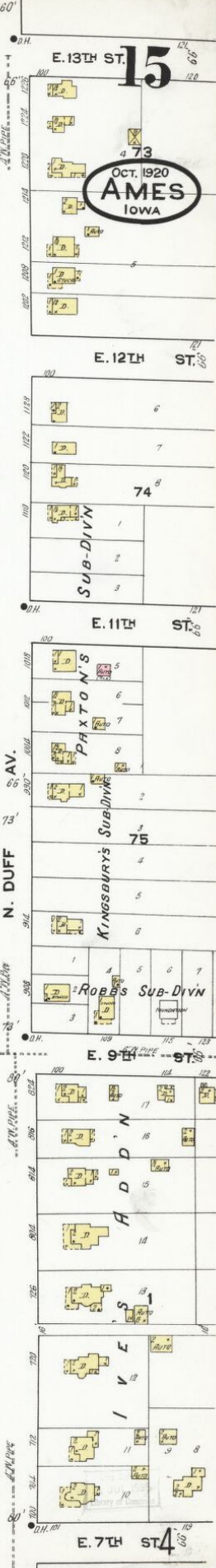
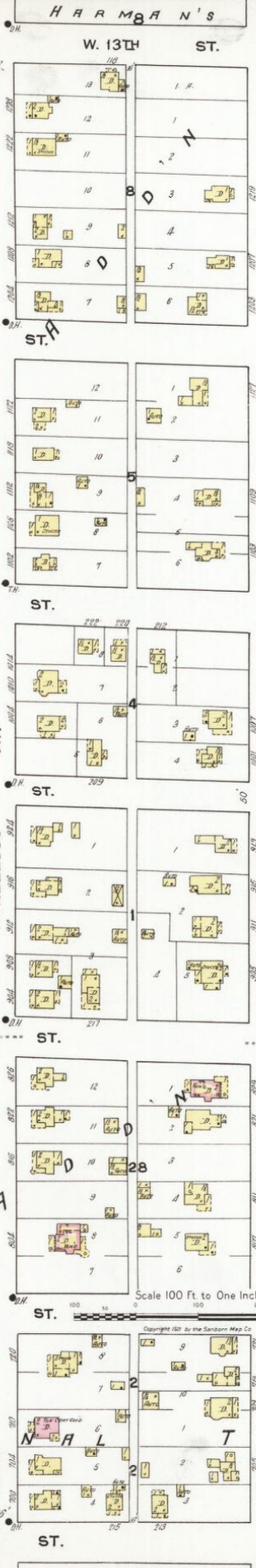
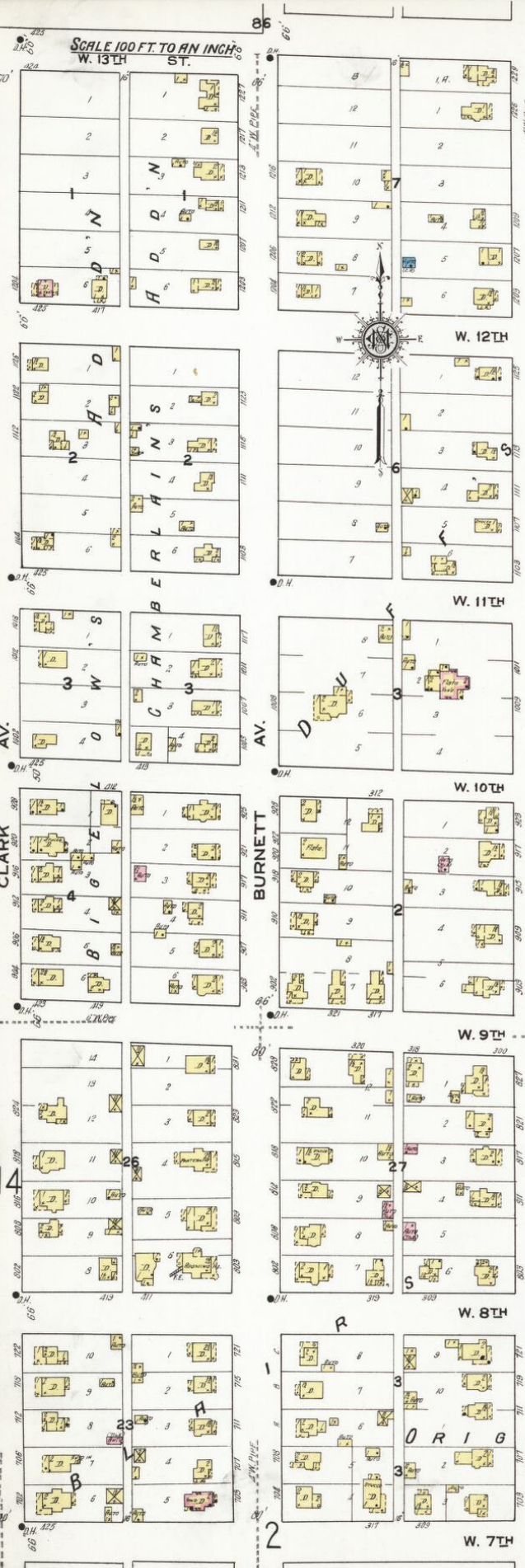
E. 11TH ST. 60

E. 11TH ST. 60

E. 9TH ST. 60

E. 9TH ST. 60

E. 7TH ST. 4



Scale 100 Ft. to One Inch

Copyright 1920 by the Sanborn Map Co.