

ITEM #: 39
DATE: 04-26-22

COUNCIL ACTION FORM

SUBJECT: 2021/22 SHARED USE PATH MAINTENANCE – LITTLE BLUESTEM

BACKGROUND:

This program provides for shared use path maintenance activities such as patching, joint repairs, micro-surfacing, as well as complete replacement. Locations are determined using a condition inventory, visual inspection of paths, and input from users. The improvements will enhance safety, usability, and aesthetics of the path/trail system.

This project is located between Little Bluestem Court and Gateway Hill Park Drive (see attached map) and will replace the existing shared use path with a new concrete path. This shared use path section needs full replacement due to deterioration from tree root damage, soil erosion, and age. A project to address the storm water erosion, including selective tree clearing was completed in 2020.

On April 20, 2022 bids were received for this project as follows:

<i>Bidder</i>	<i>Total Bid</i>
<i>Engineer's Estimate</i>	\$133,795.10
TK Concrete	\$120,604.90
Concrete Professionals	\$127,414.51
Caliber Concrete, LLC	\$144,468.03
Howrey Construction	\$146,087.41

There is \$125,000 of Local Option Sales Tax allocated for this program annually in the Capital Improvement Plan. These funds have been accumulated and carried over into the current budget. There is an additional \$68,000 available from savings from several smaller joint sealing and patching contracts through this program, **resulting in approximately \$193,000 being available to fund this project.**

ALTERNATIVES:

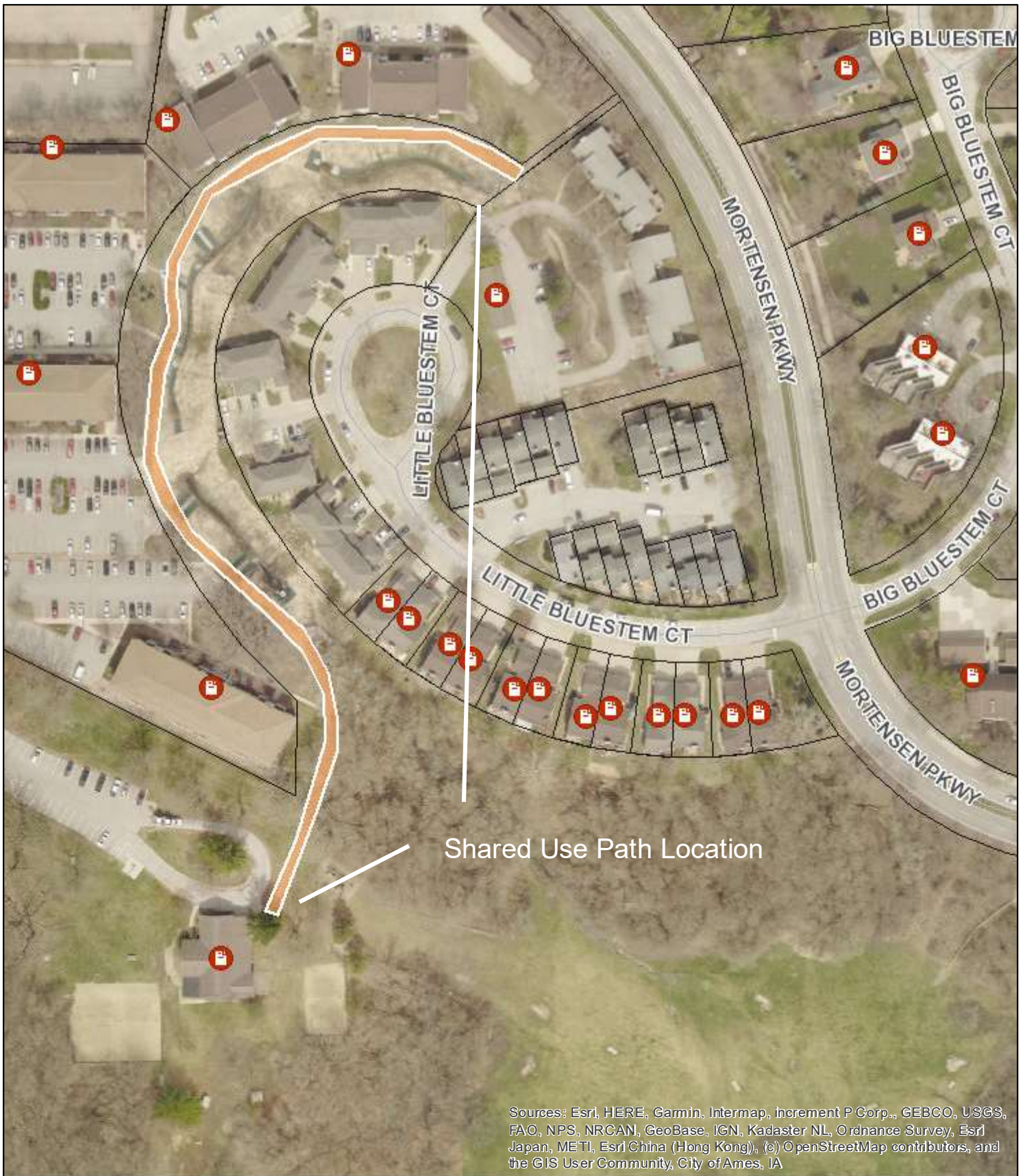
1. a. Accept the report of bids for the 2021/22 Shared Use Path Maintenance – Little Bluestem project
- b. Approve the final plans and specifications.
- c. Award the 2021/22 Shared Use Path Maintenance – Little Bluestem project to TK Concrete of Pella, IA in the amount of \$120,604.90

2. Award the project to another bidder.
3. Do not proceed with this project.

CITY MANAGER'S RECOMMENDED ACTION:

Awarding this project will allow for necessary maintenance activities to occur which will enhance user experience of this shared use path. The remaining funds will be used for additional future maintenance activities.

Therefore, it is the recommendation of the City Manager that the City Council adopt Alternative No. 1, as noted above.



Sources: Esri, HERE, Garmin, Intermap, increment P Corp., GEBCO, USGS, FAO, NPS, NRCAN, GeoBase, IGN, Kadaster NL, Ordnance Survey, Esri Japan, METI, Esri China (Hong Kong), (c) OpenStreetMap contributors, and the GIS User Community, City of Ames, IA



2021/22 SUP Maintenance - Little Bluestem



NORTH

© City of Ames, Iowa makes no warranties, expressed or implied, including without limitation, any warranties of merchantability or fitness for a particular purpose. In no event shall the City of Ames be liable for lost profits or any consequential or incidental damages caused by the use of this map.

Date: 3/1/2022

1 inch = 188 feet