

Source Water Assessment for Ames (PWS#8503039) Alluvial & Buried Sand and Gravel Aquifer



Source Water Protection

The purpose of this Source Water Protection (SWP) “Phase I” assessment is to:

- Define your source water area and susceptibility;
- locate, inventory, and rank potential contaminant sources within your source water area;
- provide the results to the public for improved protection of your drinking water.

Introduction

This Source Water Protection (SWP) “Phase I” assessment is meant to provide information and be used as a tool to help protect the quality and quantity of your drinking water. Within it you will find an inventory of your wells, tables showing potential contamination sources within your source water area, and maps showing your system’s source water information.

The source water area defined in this report is the region directly linked to your water supply, and where land use changes have the greatest influence on your drinking water quality. Your source water area was defined based on scientific information available to the Iowa Department of Natural Resources (IDNR – Source Water Protection Program).

This “Phase 1” source water assessment by no means protects your drinking water. To protect your drinking water your system should develop and implement a Source Water Protection Plan. Protection measures are different for each system, but commonly include reserving areas for future wells, cleaning up contaminants, and converting portions of your source water area to native vegetation. Further information on how to protect your drinking water, including guidebooks and online resources, can be found at www.iowasourcewater.org.

This SWP assessment includes the following sections:

1. Defining Your Source Water Area
2. Susceptibility of Your Source Water Area
3. Contaminant Sources within Your Source Water Area
4. Ranking Contaminant Sources
5. How to Protect Your Drinking Water
6. Consumer Confidence Report

Section 1: Defining Your Source Water Area

Accurate well, aquifer, and pumping information is critical to providing the best estimate of your source water area. According to our records, Ames has 10 active public wells open in the sand and gravel of the South Skunk River alluvial aquifer and 12 active public wells open in the buried sand and gravel of the Buried Sand and Gravel aquifer. The table below shows your well and aquifer information. If you believe the table is wrong, please contact the Source Water Protection Program at www.iowasourcewater.org or 515-281-3402.

W#	Local Name	Depth (ft.)	Const. date	Status	Aquifer	Aquifer thick. (ft.)	SWL (ft.)	PWL (ft.)	Rate (gpm)
30984	#22	90	9/29/1989	Active	Alluvial	40	13	22	1200
30983	#21	99	10/7/1989	Active	Alluvial	82	17	23	2088
35479	#18	83	7/12/1986	Active	Alluvial	75	8	21	2088
30099	#19	83	8/1/1986	Active	Alluvial	75	8	22	2392

30981	#20	94	10/15/1988	Active	Alluvial	78	16	25	2309
43196	#23	79	1/23/1998	Active	Alluvial	0	20	0	0
43197	#24	94	1/17/1998	Active	Alluvial	0	20	0	0
63796	#26	92	12/19/2006	Active	Alluvial	79	13	26	1364
63797	#27	89	1/21/2007	Active	Alluvial	77	12	24	1350
63795	#25	76	1/7/2007	Active	Alluvial	64	12	28	1350
18802	#9	134	1/1/1966	Active	Buried Sand and Gravel	0	0	0	0
35476	#14	131	1/1/1970	Plugged	Buried Sand and Gravel	0	0	0	0
35474	#12	128	1/1/1968	Active	Buried Sand and Gravel	0	0	0	0
18638	#10	126	1/1/1966	Active	Buried Sand and Gravel	0	0	0	0
35477	#15	128	7/19/1973	Active	Buried Sand and Gravel	0	0	0	0
3173	#5	135	9/6/1947	Not Used	Buried Sand and Gravel	54	59	65	1500
35480	#1	104	1/1/1924	Not Used	Buried Sand and Gravel	0	0	0	0
35481	#2	96	<Null>	Not Used	Buried Sand and Gravel	0	0	0	0
2268	#4	124	3/1/1935	Not Used	Buried Sand and Gravel	0	0	0	0
35478	#16	146	5/4/1978	Active	Buried Sand and Gravel	0	0	0	0
35482	#3	112	1/1/1934	Not Used	Buried Sand and Gravel	0	0	0	0
13706	#8	126	1/1/1962	Plugged	Buried Sand and Gravel	0	0	0	0
27182	#17	147	1/1/1982	Active	Buried Sand and Gravel	54	37	55	1102
35473	#11	114	1/1/1968	Active	Buried Sand and Gravel	0	0	0	0
35475	#13	114	1/1/1968	Active	Buried Sand and Gravel	0	0	0	0
35472	#6	104	10/1/1952	Active	Buried Sand and Gravel	0	0	0	0
14427	#7	110	1/1/1962	Active	Buried Sand and Gravel	0	0	0	0
56833	8A	120	9/11/2001	Active	Buried Sand and Gravel	54	49	63	680
53710	14A	126	3/22/1998	Active	Buried Sand and Gravel	0	0	0	0

Source Water Glossary

Aquifer: An underground water-bearing layer that provides a usable quantity of water.

Source Water Area: An estimation of the area contributing water to your public wells.

Capture zone: A computer modeled source water area, typically using 2-5- and 10 year time of travel periods.

Time of travel: A duration of time specified to determine the distance and area that water will travel.

Susceptibility: A measure of an aquifer's potential to become contaminated. Does not imply either good or poor water quality.

Confining layer: A layer of material which slows the movement of water.

Alluvial Aquifer

Sufficient information was available concerning your wells, aquifer and pumping conditions to produce a computer modeled estimate of your source water area. For your water supply, the source area was divided and prioritized to show where we estimate groundwater to flow during "time of travel" periods; typically 2, 5, and 10-years. These source areas for your facility were estimated using an analytical element model for the purpose of delineating source water protection areas. The model requires certain input data for your aquifer, wells, and pumping rate, described below:

•Gradient: 0.0001 ft./ft. •Flow Direction: 0 •Porosity: 0.25 •Transmissivity: 47000 ft.²/day •Aquifer Thickness: 78 ft. •Average Gallons per Day: 339000.

Buried Sand And Gravel Aquifer

Sufficient information was available concerning your wells, aquifer and pumping conditions to produce a computer modeled estimate of your source water area. For your water supply, the source area was divided and prioritized to show where we estimate groundwater to flow during "time of travel" periods; typically 2, 5, and 10-years. These source areas for your facility were estimated using an analytical element model for the purpose of delineating source water protection areas. The model requires certain input data for your aquifer, wells, and pumping rate, described below:

•Gradient: 0.0001 ft./ft. •Flow Direction: 0 •Porosity: 0.25 •Transmissivity: 14600 ft.²/day •Aquifer Thickness: 54 ft. •Average Gallons per Day: 339000.

Section 2: Susceptibility of Your Source Water Area

Research by the Iowa Geological Survey has determined that thickness of confining layers such as till, clay, and shale between the aquifer and the land surface is inversely related to aquifer susceptibility. Aquifers overlain by thicker confining beds are less susceptible to contamination than aquifers overlain by thin confining beds. The table below summarizes susceptibility by confining layer thickness.

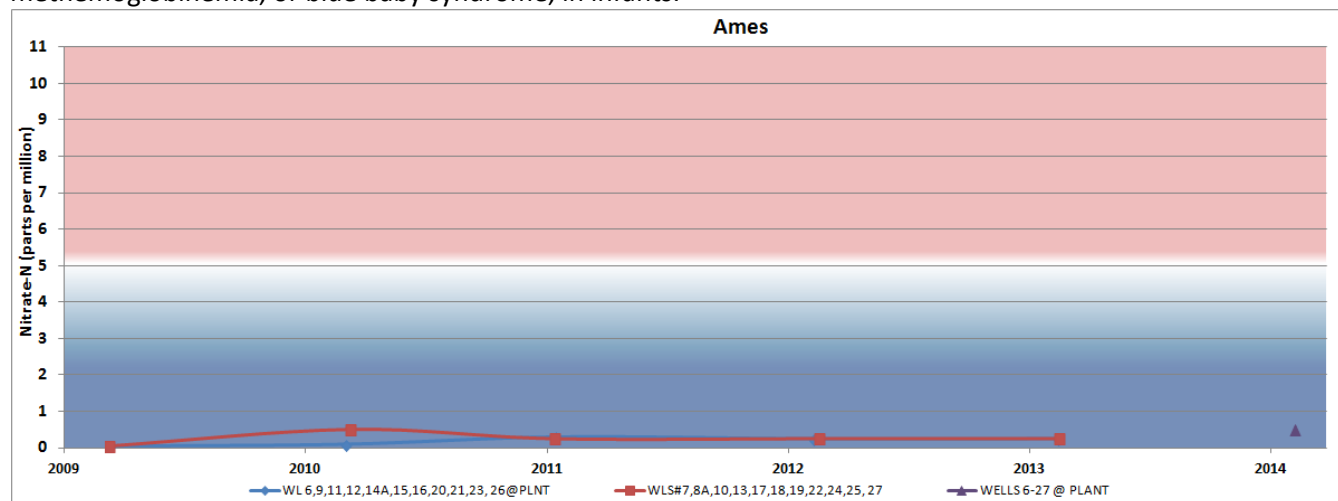
Confining layer thickness	Susceptibility designation
<25 feet	Highly susceptible
25 to 50 feet	Susceptible
50 to 100 feet	Slightly susceptible
>100 feet	Low susceptibility

Based on our data, your alluvial wells have a cumulative confining layer thickness of less than 25 feet. Your alluvial aquifer was therefore determined to be highly susceptible to contamination from the land surface.

Your wells in the Buried Sand and Gravel aquifer have a cumulative confining layer thickness of 25 to 50 feet. This aquifer was therefore determined to be susceptible to surface contamination.

Another method for determining the susceptibility of your aquifer is by using nitrate concentrations to evaluate the risk of surface contamination. Wells with higher nitrates typically have less protection from contamination at the land surface and are more at risk than wells with low nitrates. Based on our records, finished water at Ames has a six-year average nitrate-N concentration of <1.0 parts per million (ppm), based on 11 total samples.

Nitrate concentrations in your public water supply are generally low. The concentrations measured much lower than the EPA maximum contamination level of 10 ppm, indicating little contamination from surface nonpoint, fertilizer, or septic sources. Elevated nitrate concentrations can disrupt the electron transport system and cause methemoglobinemia, or blue baby syndrome, in infants.



Section 3: Contaminant Sources within Your Source Water Area

To identify potential contaminant sources we searched electronic databases for facilities and land uses that fell inside your source water area. The databases used for the inventory are described in step 3 of the Iowa Source Water Protection Guidebook. The contaminant source inventory includes facilities and land uses that have been known to contaminate groundwater.

Table 1 lists the potential contaminant sources we found in your source water area. The map numbers correspond to the contaminant source list in Table 1. The potential contaminant sources are derived from databases that have varying degrees of locational accuracy, and therefore could be located in the wrong area or omitted from the map entirely. For this reason, locational accuracy is noted at the end of the table. You or other residents may be aware of additional contaminant sources that should be included, feel free to modify this report to reflect your knowledge.

For many aquifers, particularly those overlain by thick confining layers, the greatest threat of contamination to the aquifer is through existing wells that penetrate the confining layers. For this reason, Table 2 lists all known wells, owners, and locations identified in your source water area. A numbered symbol shown on the map at the end of this report identifies well locations. Well locations are derived from databases that have varying degrees of accuracy, and therefore could be mapped in the wrong area or omitted from the map entirely. For this reason, locational accuracy is noted at the end of Table 2.

In addition to the specific “point” sources listed in Table 1, nonpoint sources of contamination also exist in your source water area. In Iowa, a potentially significant nonpoint source of contamination is row crop agriculture. Land use percentages and acreages are presented in Table 3.

Section 4: Ranking Contaminant Sources

We have attempted to prioritize the relative risk to your source water based on a three component ranking system; 1) the location of the potential contaminant source in the source water area, 2) the susceptibility ranking of the aquifer to contamination, and 3) the type of contaminant source. Points are assigned for each category and a cumulative score calculated for each potential contaminant source using the scores for each of the three components. Higher numbers always correspond to higher risk in this report.

1) Location of potential contaminant sources

Your potential contaminant sources are ranked from 1-3 based on the capture zone they are located in, with greater weight given based on proximity to the well. Fixed radius capture zones also received greater risk as they represent unknown or poorly known hydrogeologic conditions. The table below shows the risk score assigned to each source water area.

Source Water Area	Risk score
2-year time of travel, hydrologic boundary, fixed radius, 1-mile, modified karst - high	3
5-year time of travel, modified karst – medium	2
10-year time of travel, aquifer retrieval area, surface runoff area	1

2) Aquifer susceptibility to contamination

Susceptibility rankings were given scores to give more priority to aquifers with less confining layer thickness. Aquifer susceptibilities were given ranks of 1-4, from low susceptibility to highly susceptible. If your well depth or confining layer thickness is unknown, the source water area was automatically designated as “highly susceptible” and ranked 4.

3) Land-use type

The land-use type combines the potential for different facility classes or land uses to release contaminants with an estimate of the toxicity of the contaminants that may be released. Land-use risks are assigned values from 1 to 5 (least to greatest risk).

The final “Risk Score” for the source water area is the result of summing the three components of relative risk. For a list of land-use types and additional information regarding the ranking classification, please refer to the Iowa Source Water Protection Guidebook.

The goal for ranking potential contaminants is to provide your system with a list to help prioritize potential risks. These risks can only be addressed through local initiatives and strategies started by your community. To begin a SWP plan, it is up to your local community to decide which potential contaminant sources carry the most risk, and to proactively engage problems you find that may affect your drinking water. The risk rankings provided in this report are only a guide; the final decision on the priority of potential contaminant sources rests with your local source water protection team.

Section 5: How to Protect Your Drinking Water

This Source Water Phase I assessment only provides information on your source water area and contaminants. Your community is responsible for taking the necessary action to ensure you have clean drinking water for future generations. To do this the Iowa Source Water Program strongly encourages you to start a Source Water Protection Plan. A SWP plan is different for each community, but the steps needed to complete one are the same for every system. Most steps have already been outlined and partially completed in the SWP “Phase 1” assessment:

Steps for completing a Source Water Protection plan

- Step 1:** Organize a source water team
- Step 2:** Identify your source water areas
- Step 3:** Inventory well and contaminant sources
- Step 4:** Assess and rank contaminant sources
- Step 5:** Develop an action plan
- Step 6:** Construct or update your emergency response plan
- Step 7:** Submit and Implement your SWP Plan

If your community is interested in protecting your drinking water, there are plenty of free resources available to help guide you through this process, www.iowasourcewater.org has many online resources available, including a detailed [Guidebook](#) and [Workbook](#) catered for Iowa community water supplies. Please contact Bob Rowden (515-281-3402) of the Source Water Program for further information.

Section 6: Consumer Confidence Report

As the agency responsible for conducting drinking water programs in the state of Iowa, IDNR must provide each public water supply with language to be included in their Consumer Confidence Report regarding source water protection. The following language, at a minimum, must be included in each Consumer Confidence Report you produce from now on:

“The Ames water supply obtains its water from the sand and gravel of the South Skunk River alluvial aquifer and a portion of its water from the buried sand and gravel of the Buried Sand and Gravel aquifer. The alluvial aquifer was determined to be highly susceptible to contamination because the characteristics of the aquifer and overlying materials provide little protection from contamination at the land surface. The Buried Sand and Gravel aquifer was determined to be susceptible to contamination because the characteristics of the aquifer and overlying materials provide some protection from contaminants from the land surface. Ames’s alluvial wells will be highly susceptible to contaminants

near the land surface such as leaking underground storage tanks, contaminant spills, and excess fertilizer application. The Buried Sand and Gravel wells will be susceptible to surface contaminants such as leaking underground storage tanks, contaminant spills, and excess fertilizer application. A detailed evaluation of your source water was completed by the Iowa Department of Natural Resources, and is available from the Water Operator at 515-239-5150.”

You may modify this language or include additional information if you so desire, but you must identify the source of your system’s drinking water and identify known sources of potential contamination.

Table 1a. Inventory and ranking of potential contaminant sources.

Ames Public Water Supply (8503039)

Phase I - Contaminant Source Inventory and Assessment

Aquifer: Alluvial Highly Susceptible (risk factor = 4)

Map No.	Site Name	Site Type	Site Link ¹	Program ID	Site Address	Loc'n Acc ²	Land Use Risk ³	Risk Score ⁴
---------	-----------	-----------	------------------------	------------	--------------	------------------------	----------------------------	-------------------------

Capture zone: 2-year time of travel (risk factor = 3)

1	Ames Municipal Electric System	Wastewater treatment facility	310645095	8503002	502 Carroll Avenue, Ames, IA 50010	good	5	12
2	R Friedrich And Sons Inc	Underground storage tank	310580597	198610173	729 E Lincoln Way, Ames, IA 50010	poor	5	12
3	United Parcel Service	Leaking USTs	311256965	7LTS17	719 E Lincoln Way, Ames, IA 50010	good	5	12
4	Key Cooperative	Leaking USTs	311254594	8LTC99	809 E Lincoln Way, Ames, IA 50010	good	5	12
5	Mcfarland Clinic Maintenance	Cond. Ex. Sm. quan. haz. waste gen.	311254594	110018904890	809 E Lincolnway, Ames, IA 50010	fair	3	10
6	Ames Municipal Electric System	Wastewater outfall	310645095	8503002	502 Carroll Avenue, Ames, IA 50010	fair	5	12
7	Iowa State Ready Mix - Ames	Air Permit - Minor	311192351	85-01-090	1109 East Lincoln Way, Ames, IA 50010	poor	3	10

Capture zone: 5-year time of travel (risk factor = 2)

1	Sage Lube Systems, Inc.	Underground storage tank	310531332	198606195	232 So Duff, Ames, IA 50010	poor	5	11
2	Industrial Plating Company - Ames	Underground storage tank	311125741	198605730	212 S High Ave, Ames, IA 50010	good	5	11
3	Industrial Plating Company - Ames	Air Permit - Minor	311125741	85-01-076	212 S High Ave, Ames, IA 50010	good	3	9
4	Swift Stop #1	Leaking USTs	310481495	8LTX07	412 S Duff, Ames, IA 50010	good	5	11
5	Central Iowa Convenience Store	Leaking USTs	310594793	7LTE29	508 S Duff Ave, Ames, IA 50010	good	5	11
6	Honda Of Ames	Underground storage tank	310627006	198602718	538 South Duff, Ames, IA 50010	poor	5	11
7	Layne Western	Leaking USTs	310447899	7LTC11	705 S Duff, Ames, IA 50010	good	5	11
8	Layne Western	Leaking USTs	310447899	9LTC31	705 S Duff, Ames, IA 50010	good	5	11
9	Proposed Wal-mart Supercenter	Contaminated sites	311417026	498	538 S Duff Ave, Ames, IA 50010	good	5	11
10	Ames Municipal Electric System	Wastewater outfall	310645095	8503002	502 Carroll Avenue, Ames, IA 50010	poor	5	11
11	Ames Municipal Electric System	Wastewater outfall	310645095	8503002	502 Carroll Avenue, Ames, IA 50010	poor	5	11
12	Ames Rentals	Leaking USTs	310553958	8LTQ69	710 South Duff, Ames, IA 50010	good	5	11
13	806 Duff Avenue	Contaminated sites	311411844	1205	806 Duff Avenue, Ames, IA 50010	good	5	11
14	Iowa State Ready Mix Concrete Inc	Tier II Chemical Storage	311257444	FAIDSIT2A000066	1109 E Lincoln Way, Ames, IA 50010	good	3	9
15	Iowa State Ready Mix Concrete Inc	Leaking USTs	311257444	8LTJ25	1109 E Lincoln Way, Ames, IA 50010	good	5	11

Capture zone: 10-year time of travel (risk factor = 1)

1	Road Surface	Hazardous Materials Spill	311580586	120209-AHB-1130	321 S 5th St, Ames, IA 50010	poor	0	5
2	Carney Auto Parts	Hazardous Materials Spill	311578324	061109-AHB-1424	1010 S Duff Ave, Ames, IA 50010	poor	0	5
3	Jerry Carney & Sons Inc	Underground storage tank	310441777	198600529	1010 South Duff Avenue, Ames, IA 50010	good	5	10
4	Swift Stop #4	Leaking USTs	310592986	8LTG47	1118 S Duff Ave, Ames, IA 50010	good	5	10
5	E-farm/trileaf Petroleum Contaminated Soil Landfarm	Solid waste facility	310200216	75-SDP-07-02	616 Billy Sunday Rd, Ames, IA 50010	good	5	10
6	E-farm/trileaf Petroleum Contaminated Soil Landfarm	Solid waste facility	310200216	58-SDP-05-03	616 Billy Sunday Rd, Ames, IA 50010	good	5	10
7	E-farm/trileaf Petroleum Contaminated Soil Landfarm	Solid waste facility	310200216	77-SDP-51-03	616 Billy Sunday Rd, Ames, IA 50010	good	5	10
8	E-farm/trileaf Petroleum Contaminated Soil Landfarm	Solid waste facility	310200216	85-SDP-16-04	616 Billy Sunday Rd, Ames, IA 50010	good	5	10

9	E-farm/trileaf Petroleum Contaminated Soil Landfarm	Solid waste facility	310200216	16-SDP-03-03	616 Billy Sunday Rd, Ames, IA 50010	good	5	10
10	E-farm/trileaf Petroleum Contaminated Soil Landfarm	Solid waste facility	310200216	13-SDP-02-03	616 Billy Sunday Rd, Ames, IA 50010	good	5	10
11	E-farm/trileaf Petroleum Contaminated Soil Landfarm	Solid waste facility	310200216	85-SDP-15-02	616 Billy Sunday Rd, Ames, IA 50010	good	5	10
12	E-farm/trileaf Petroleum Contaminated Soil Landfarm	Solid waste facility	310200216	04-SDP-08-03	616 Billy Sunday Rd, Ames, IA 50010	good	5	10
13	E-farm/trileaf Petroleum Contaminated Soil Landfarm	Solid waste facility	310200216	05-SDP-03-03	616 Billy Sunday Rd, Ames, IA 50010	good	5	10
14	E-farm/trileaf Petroleum Contaminated Soil Landfarm	Solid waste facility	310200216	07-SDP-23-02	616 Billy Sunday Rd, Ames, IA 50010	good	5	10
15	E-farm/trileaf Petroleum Contaminated Soil Landfarm	Solid waste facility	310200216	49-SDP-07-03	616 Billy Sunday Rd, Ames, IA 50010	good	5	10
16	E-farm/trileaf Petroleum Contaminated Soil Landfarm	Solid waste facility	310200216	77-SDP-54-04	616 Billy Sunday Rd, Ames, IA 50010	good	5	10

¹ID's are hyperlinked to detailed contaminant source information where available. Click once to open the spreadsheet, then click again to follow the link.

²Estimated horizontal accuracy: < 25m. = good; 25m. to 50m. = fair; >50m. = poor

³Score range: 1 to 5, see Table 3 of the Iowa Source Water Protection and Assessment plan

⁴Sum of land use, capture zone, and aquifer susceptibility risk factors

Table 1b. Inventory and ranking of potential contaminant sources in the Buried Sand and Gravel aquifer.

Ames Public Water Supply (8503039)

Phase I - Contaminant Source Inventory and Assessment

Aquifer: Buried Sand and Gravel Susceptible (*risk factor = 3*)

Map No.	Site Name	Site Type	Site Link ¹	Program ID	Site Address	Loc'n Acc ²	Land Use Risk ³	Risk Score ⁴
---------	-----------	-----------	------------------------	------------	--------------	------------------------	----------------------------	-------------------------

Capture zone: 2-year time of travel (*risk factor = 3*)

1	Iowa State University - Power Plant	Air Permit - Title V	310203984	85-01-007-02	220 Power Plant Bldg, Ames, IA 50011	good	3	9
2	Iowa State University - Power Plant	Solid waste facility	310203984	85-SDP-05-80	220 Power Plant Bldg, Ames, IA 50011	good	5	11
3	Iowa State University Power Plant	Wastewater outfall	310642965	8503100	Wallace Road, Ames, IA	good	5	11
4	Iowa State University Power Plant	Wastewater treatment facility	310642965	8503100	Wallace Road, Ames, IA	good	5	11
5	City Of Ames Cyride	Underground storage tank	310595565	198601734	1700 University Blvd, Ames, IA 50010	good	5	11
6	Cyride	Hazardous Materials Spill	311657299	050808-AHB-1008	1700 University Ave, Ames, IA 50011	good	0	6
7	Iowa Department Of Transportation	Wastewater industrial contributor	310644354	7751001C1	, , IA	poor	5	11
8	Ames- College Park Coal Gas	Contaminated sites	310267366	159	903 2nd Street, Ames, IA 50010	good	5	11
9	Transportation Spill	Hazardous Materials Spill	311577661	052406-AHB-1148	, Ames, IA	poor	0	6
10	Transportation Spill	Hazardous Materials Spill	311625257	071507-CWF-1804	, Ames, IA	poor	0	6
11	Vacant Property	Leaking USTs	310477619	8LTY05	126 Elm St., Ames, IA 50010	poor	5	11
12	City Of Ames Power Plant	Hazardous Materials Spill	311656898	061306-KAL-1027	, Ames, IA	poor	0	6
13	Isu	Hazardous Materials Spill	311660385	071707-RLT-1449	, Ames, IA	poor	0	6

14	Deckers Elmquist Bp	Hazardous Materials Spill	311257159	040307-TAP-2044	821 Lincoln Way, Ames, IA 50010	good	0	6
15	Elmquist/deckers Bp	Small quan. hazarous waste gen.	311257159	110005755263	821 Lincoln Way, Ames, IA 50010	fair	4	10
16	Elmquist/deckers Bp	Small quan. hazarous waste gen.	311257159	110005755263	821 Lincoln Way, Ames, IA 50010	fair	4	10
17	Deckers Elmquist Bp	Leaking USTs	311257159	8LTM11	821 Lincoln Way, Ames, IA 50010	good	5	11
18	Iowa Dept Of Transportation	Air Permit - Minor	311258194	85-01-047	800 Lincoln Way, Ames, IA 50010	good	3	9
19	Iowa Dept Of Transportation	Small quan. hazarous waste gen.	311258194	110000888399	800 Lincoln Way, Ames, IA 50010	good	4	10
20	Iowa Dept Of Transportation	Above ground fuel storage	311258194	AST13456	800 Lincoln Way, Ames, IA 50010	good	5	11
21	Iowa Dept Of Transportation	Small quan. hazarous waste gen.	311258194	110000888399	800 Lincoln Way, Ames, IA 50010	good	4	10
22	Centurylink - Ames Co	Tier II Chemical Storage	310760704	FAIDSIT2A000006	509 Main Street, Ames, IA 50010	poor	3	9
23	Mary Greeley Medical Center	Leaking USTs	310465482	9LTC44	1111 Duff Ave, Ames, IA 50010	poor	5	11
24	Iowa Dept Of Transportation	Small quan. hazarous waste gen.	311258194	110000888399	800 Lincoln Way, Ames, IA 50010	good	4	10
25	Mary Greeley Medical Center	Above ground fuel storage	310465482	AST14035	1111 Duff Ave, Ames, IA 50010	poor	5	11
26	City Of Ames Lap	Above ground fuel storage	310660252	AST14190	515 Clark Ave, Ames, IA 50010	good	5	11
27	City Of Ames Hrlap	Solid waste facility	310660289	85-SDP-10-90	515 Clark Ave, Ames, IA 50010	good	5	11
28	Ames, City Of Ms4	Wastewater treatment facility	310647333	8503003	515 Clark, Ames, IA 50010	poor	5	11
29	City Of Ames Lap	Solid waste facility	310660252	85-SDP-06-83	515 Clark Ave, Ames, IA 50010	good	5	11
30	Qwest Communications - Ames (5th Street)	Air Permit - Minor	311192342	85-01-085	510 5th St # 12, Ames, IA 50010	poor	3	9
31	Mary Greeley Medical Center	Hospitals			117 11th Street, Ames, IA 50010	good	4	10
32	Transportation Spill	Hazardous Materials Spill	311600863	062608-KDM-0910	5th St & Clark St, Ames, IA 50010	good	0	6
33	Express Lane (conoco)	Leaking USTs	310458954	7LTJ69	539 Lincoln Way, Ames, IA 50010	good	5	11
34	Mary Greeley Medical Center	Cond. Ex. Sm. quan. haz. waste gen.	310465482	110036386176	1111 Duff Ave, Ames, IA 50010	fair	3	9
35	Mary Greeley Medical Center	Cond. Ex. Sm. quan. haz. waste gen.	310465482	110036386176	1111 Duff Ave, Ames, IA 50010	fair	3	9
36	Hy-vee Gas	Underground storage tank	311715974	201000009	636 Lincoln Way, Ames, IA 50010	good	5	11
37	C/o Real Estate Operations	Underground storage tank	310528211	198607803	509 Main St, Ames, IA 50010	poor	5	11
38	Mary Greeley Medical Center	Cond. Ex. Sm. quan. haz. waste gen.	310465482	110036386176	1111 Duff Ave, Ames, IA 50010	fair	3	9
39	Transportation Spill	Hazardous Materials Spill	311650721	051005-AHB-1053	, Ames, IA 50010	poor	0	6
40	Iowa Dept Of Transportation	Leaking USTs	311258194	7LTF81	800 Lincoln Way, Ames, IA 50010	good	5	11
41	Iowa Dept Of Transportation	Leaking USTs	311258194	8LTJ99	800 Lincoln Way, Ames, IA 50010	good	5	11
42	Data Gas	Leaking USTs	310513129	7LTY16	517 Lincoln Way, Ames, IA 50010	good	5	11
43	Car Tech	Underground storage tank	311256043	198603979	305 6th St, Ames, IA 50010	good	5	11
44	Mayfair Cleaners - Ames	Air Permit - Dry Cleaner	311472349	85-01-068	508 Lincoln Way, Ames, IA 50010	fair	5	11
45	Mathison Ford Ltd	Underground storage tank	310479237	198600356	323 5th Street, Ames, IA 50010	poor	5	11
46	Almost Always Open	Leaking USTs	311259526	8LTP18	419 Lincoln Way, Ames, IA 50010	good	5	11
47	U S Postal Service	Underground storage tank	310603808	198608638	525 Kellogg Avenue, Ames, IA 50010	poor	5	11
48	Nelson Electric	Leaking USTs	310617437	7LTE52	116 Clark, Ames, IA 50010	poor	5	11
49	Transportation Spill	Hazardous Materials Spill	311671491	071309-KAL-1032	5th St & Kellog, Ames, IA 50010	poor	0	6
50	Casey's General Store #2298	Leaking USTs	310590942	7LTR22	428 Lincoln Way, Ames, IA 50010	good	5	11
51	Swift Stop #6	Leaking USTs	310573894	9LTE76	125 6th St, Ames, IA 50010	good	5	11
52	Environmental Resource Services	Solid waste facility	310272616	85-SDP-17-04	208 5th Street, Ames, IA 50010	good	5	11
53	Goodyear Asc	Underground storage tank	310451997	198609239	402 W Lincoln Way, Ames, IA 50010	poor	5	11
54	Star	Leaking USTs	310601882	8LTA40	326 Lincoln Way, Ames, IA 50010	good	5	11

55	Former Neighbors Plumbing	Leaking USTs	310433386	8LTX74	303 Lincoln Way, Ames, IA 50010	good	5	11
56	Former Pump-n-party	Leaking USTs	310475757	8LTB28	223 Lincoln Way, Ames, IA 50010	poor	5	11
57	Body Of Christ Church	Leaking USTs	311179185	9LTN67	114 Fifth Street, Ames, IA 50010	poor	5	11
58	Ames Municipal Utilities	Air Permit - Title V	310630289	85-01-006-02	200 E 5th Street, Ames, IA 50010	good	3	9
59	Kum & Go #214	Hazardous Materials Spill	311257846	022213-RLT-1418	111 Duff Ave, Ames, IA 50010	good	0	6
60	City Of Ames Electric Production	Underground storage tank	310597149	198609779	5th & Carroll, Ames, IA 50010	poor	5	11
61	Ames Municipal Utilities	Tier II Chemical Storage	310630289	FAIDSIT2A000051	200 E 5th Street, Ames, IA 50010	good	3	9
62	Kum & Go #214	Hazardous Materials Spill	311257846	012310-WCG-2017	111 Duff Ave, Ames, IA 50010	good	0	6
63	Kum & Go #214	Hazardous Materials Spill	311257846	112713-JAT-1100	111 Duff Ave, Ames, IA 50010	good	0	6
64	Kum & Go #214	Hazardous Materials Spill	311257846	021012-AHB-1559	111 Duff Ave, Ames, IA 50010	good	0	6
65	Kum & Go #214	Leaking USTs	311257846	8LTT16	111 Duff Ave, Ames, IA 50010	good	5	11
66	Kum & Go #214	Leaking USTs	311257846	9LTE28	111 Duff Ave, Ames, IA 50010	good	5	11
67	Kemps Service	Leaking USTs	310604825	8LTB62	105 Lincoln Way, Ames, IA 50010	poor	5	11
68	Jarco Stores	Underground storage tank	311257177	198606625	104 Lincoln Way, Ames, IA 50010	poor	5	11
69	Hansen Sinclair	Leaking USTs	310566499	8LTJ14	105 E Lincoln Way, Ames, IA 50010	good	5	11
70	Butchs Amoco Service Center	Leaking USTs	311489066	7LTS72	100 E Lincoln Way, Ames, IA 50010	poor	5	11
71	Gary Thompson Oil	Underground storage tank	310527203	198604962	128 S Duff, Ames, IA 50010	poor	5	11
72	Butchs Amoco Service Center	Leaking USTs	311489066	9LTP48	100 E Lincoln Way, Ames, IA 50010	poor	5	11
73	U S West	Underground storage tank	311258498	198609760	210 S 3rd, Ames, IA 50010	poor	5	11
74	Jify Lube/amoco Transmissions	Leaking USTs	311257364	7LTI05	220 S Duff Ave, Ames, IA 50010	poor	5	11
75	Ames Municipal Utilities	Toxic release inventory	310866085	110017425730	200 East 5th Street, Ames, IA 50010	good	5	11
76	Sage Lube Systems, Inc.	Underground storage tank	310531332	198606195	232 So Duff, Ames, IA 50010	poor	5	11
77	Ames Municipal Utilities	Toxic release inventory	310866085	110017425730	200 East 5th Street, Ames, IA 50010	good	5	11
78	Ames City Of Public Works	Underground storage tank	311255142	198601733	110 Center Ave, Ames, IA 50010	good	5	11
79	A. O. Chantland Resource Recovery Facility	Solid waste facility	311216996	85-SDP-01-75	110 Center Ave, Ames, IA 50010	good	5	11
80	Industrial Plating Company - Ames	Underground storage tank	311125741	198605730	212 S High Ave, Ames, IA 50010	good	5	11
81	Industrial Plating Company - Ames	Air Permit - Minor	311125741	85-01-076	212 S High Ave, Ames, IA 50010	good	3	9

Capture zone: 5-year time of travel (risk factor = 2)

1	Iowa State University	Above ground fuel storage	310631677	AST14227	2809 Daley Dr, Ames, IA 50011	good	5	10
2	Iowa State University	Air Permit - Title V	310631677	85-01-007-01	2809 Daley Dr, Ames, IA 50011	good	3	8
3	Iowa State University	Large quan. hazardous waste gen.	311492967	110041447468	2809 Daley Dr, Ames, IA 50011	good	5	10
4	Iowa State University Ms4	Wastewater treatment facility	310649531	8503004	1122 Eh&s Services Building, Ames, IA	poor	5	10
5	Handling And Storage Spill	Hazardous Materials Spill	311664563	011106-KAL-1510	Wallace Rd, Ames, IA 50011	good	0	5
6	Isu Motor Pool	Leaking USTs	310440109	7LTY20	Haber Rd, Ames, IA 50011	good	5	10
7	Iowa State University Coal Gas	Contaminated sites	311411175	375	Iowa State University Power Plant, Ames, I	good	5	10
8	Transportation Spill	Hazardous Materials Spill	311661975	041607-AHB-0948	Lincoln Way, Ames, IA 50011	good	0	5
9	Isu Physical Plant	Leaking USTs	310460734	7LTY04	Wallace Street, Ames, IA 50011	good	5	10
10	Martin Marietta Materials(ames)	Above ground fuel storage	311987054	AST13003	, Ames, IA 50010	poor	5	10
11	Cy-ride	Hazardous Materials Spill	311601335	101606-JAT-1706	13th & Grand, Ames, IA	poor	0	5
12	Iowa Dot(sc/200 S. Hamilton)	Above ground fuel storage	311991425	AST13477	, Ames, IA 50010	poor	5	10
13	Manatt's Inc.(ames)	Above ground fuel storage	311986959	AST12992	, Ames, IA 50010	poor	5	10

14	Former Grand Avenue Service	Leaking USTs	310500675	7LTX88	1228 Grand Avenue, Ames, IA 50010	poor	5	10
15	Ames Fire Dept	Leaking USTs	310528177	8LTZ30	1300 Burnett, Ames, IA 50010	poor	5	10
16	Ames Municiple Unility Substation	Hazardous Materials Spill	311637697	102609-AHB-1632	430 E 5th St, Ames, IA 66901	poor	0	5
17	Private Property (rp Not Owner)	Hazardous Materials Spill	311667128	033010-AHB-1105	56985 E Lincoln Hwy, Ames, IA 50010	poor	0	5
18	Mcfarland Clinic Pc	Tier II Chemical Storage	311372677	FAIDSIT2A000035	1215 Duff Avenue, Ames, IA 50010	poor	3	8
19	Mcfarland Clinic Pc	Cond. Ex. Sm. quan. haz. waste gen.	311372677	110005778417	1215 Duff Ave, Ames, IA 50010	fair	3	8
20	Ames Municiple Cemetery	Cemeteries			T83n, R24w, Sec. 2, Ne, Se, , IA	good	2	7
21	Road Surface	Hazardous Materials Spill	311580586	120209-AHB-1130	321 S 5th St, Ames, IA 50010	poor	0	5
22	S. Hanson Lumber Company	Contaminated sites	311411944	862	314 Borne Avenue, Ames, IA	good	5	10
23	Swift Stop #1	Leaking USTs	310481495	8LTX07	412 S Duff, Ames, IA 50010	good	5	10
24	Iowa Electric Light & Power Company	Underground storage tank	310618638	198604483	605 E 2nd, Ames, IA 50010	poor	5	10
25	Ames Fmgp	Contaminated sites	310264118	52	605 East 2nd Ave., Ames, IA 50010	poor	5	10
26	Central Iowa Convenience Store	Leaking USTs	310594793	7LTE29	508 S Duff Ave, Ames, IA 50010	good	5	10
27	Honda Of Ames	Underground storage tank	310627006	198602718	538 South Duff, Ames, IA 50010	poor	5	10
28	Layne Western	Leaking USTs	310447899	7LTC11	705 S Duff, Ames, IA 50010	good	5	10
29	Layne Western	Leaking USTs	310447899	9LTC31	705 S Duff, Ames, IA 50010	good	5	10
30	Composite Technologies Corp	Underground storage tank	310588148	199517823	525 E. 2nd Ave, Ames, IA 50010	poor	5	10
31	Proposed Wal-mart Supercenter	Contaminated sites	311417026	498	538 S Duff Ave, Ames, IA 50010	good	5	10
32	Asgrow Seed Company Ames Iowa Breeding Station	Underground storage tank	310514597	199016776	634 E Lincoln Way, Ames, IA 50010	poor	5	10
33	Ames Municipal Electric System	Wastewater outfall	310645095	8503002	502 Carroll Avenue, Ames, IA 50010	poor	5	10
34	Ames Municipal Electric System	Wastewater treatment facility	310645095	8503002	502 Carroll Avenue, Ames, IA 50010	good	5	10
35	Ames Municipal Electric System	Wastewater outfall	310645095	8503002	502 Carroll Avenue, Ames, IA 50010	poor	5	10
36	R Friedrich And Sons Inc	Underground storage tank	310580597	198610173	729 E Lincoln Way, Ames, IA 50010	poor	5	10
37	United Parcel Service	Leaking USTs	311256965	7LTS17	719 E Lincoln Way, Ames, IA 50010	good	5	10
38	Key Cooperative	Leaking USTs	311254594	8LTC99	809 E Lincoln Way, Ames, IA 50010	good	5	10
39	Mcfarland Clinic Maintenance	Cond. Ex. Sm. quan. haz. waste gen.	311254594	110018904890	809 E Lincolnway, Ames, IA 50010	fair	3	8
40	Ames Municipal Electric System	Wastewater outfall	310645095	8503002	502 Carroll Avenue, Ames, IA 50010	fair	5	10

Capture zone: 10-year time of travel (risk factor = 1)

1	Davidson Hall, Isu	Leaking USTs	310585052	7LTY65	Osborne Drive, Ames, IA 50011	good	5	9
2	Transportation Spill	Hazardous Materials Spill	311594791	031208-KAL-1636	Osborn St, Ames, IA	poor	0	4
3	Iowa State University	Hazardous Materials Spill	311622921	111708-RLT-1334	Union Dr & Bissel Rd, Ames, IA 50011	good	0	4
4	Transportation Spill	Hazardous Materials Spill	311694845	110207-KAL-1500	Union Dr, Ames, IA	poor	0	4
5	Ames Laboratory Doe	Air Permit - Minor	311125714	85-01-057	G40 Tasf/ Iowa State University, Ames, IA	good	3	7
6	Isu Black Engineering	Leaking USTs	310529936	9LTH30	Bissell Road & Union Dr, Ames, IA 50011	good	5	9
7	Handling And Storage Spill	Hazardous Materials Spill	311579243	020805-RLT-1505	Stange Rd & Hawthorne Ct, Ames, IA 50011	poor	0	4
8	Ames Laboratory	Leaking USTs	310454349	7LTC28	Iowa State University, Ames, IA 50011	poor	5	9
9	Transportation Spill	Hazardous Materials Spill	311650018	121406-AHB-1340	Morrill Rd, Ames, IA	poor	0	4
10	Kum & Go #216	Leaking USTs	310467982	7LTR28	203 Welch Ave, Ames, IA 50014	poor	5	9
11	218 Welch Avenue	Contaminated sites	312017377	2154	218 Welch Ave, Ames, IA 50014	good	5	9
12	Cyclone Plaza	Tier II Chemical Storage	310789769	FAIDSIT2A000043	200 Stanton Avenue, Ames, IA 50014	poor	3	7
13	Handling And Storage Spill	Hazardous Materials Spill	311678514	120605-JAT-0600	, Ames, IA 50010	poor	0	4

14	Isu Fire Service	Leaking USTs	310434621	7LTE67	Haber Road, Ames, IA 50011	good	5	9
15	Transportation Spill	Hazardous Materials Spill	311604514	102505-RLT-1140	, Ames, IA 50011	good	0	4
16	Cyrde Bus Facility Expansion	Hazardous Materials Spill	311610478	042309-RLT-1352	1700 University Blvd, Ames, IA 50010	poor	0	4
17	Bethesda Lutheran Church	Underground storage tank	310524759	198604307	1517 Northwestern Ave, Ames, IA 50010	poor	5	9
18	Maintenance Facility	Leaking USTs	310561778	8LTC34	1621 Wilson, Ames, IA 50010	poor	5	9
19	City Of Ames	Underground storage tank	310552577	198608824	Squaw Creek Booster, Ames, IA 50010	poor	5	9
20	Hilton Coliseum	Underground storage tank	310490689	198810834	Lincoln Way, Ames, IA 50010	poor	5	9
21	City Of Ames Parks & Recreation	Underground storage tank	310534984	198608951	401 E 20th St, Ames, IA 50010	poor	5	9
22	Ames Rentals	Leaking USTs	310553958	8LTQ69	710 South Duff, Ames, IA 50010	good	5	9
23	806 Duff Avenue	Contaminated sites	311411844	1205	806 Duff Avenue, Ames, IA 50010	good	5	9
24	Carney Auto Parts	Hazardous Materials Spill	311578324	061109-AHB-1424	1010 S Duff Ave, Ames, IA 50010	poor	0	4
25	Jerry Carney & Sons Inc	Underground storage tank	310441777	198600529	1010 South Duff Avenue, Ames, IA 50010	good	5	9
26	Swift Stop #4	Leaking USTs	310592986	8LTG47	1118 S Duff Ave, Ames, IA 50010	good	5	9
27	Iowa State Ready Mix - Ames	Air Permit - Minor	311192351	85-01-090	1109 East Lincoln Way, Ames, IA 50010	poor	3	7
28	Iowa State Ready Mix Concrete Inc	Tier II Chemical Storage	311257444	FAIDSIT2A000066	1109 E Lincoln Way, Ames, IA 50010	good	3	7
29	Iowa State Ready Mix Concrete Inc	Leaking USTs	311257444	8LTJ25	1109 E Lincoln Way, Ames, IA 50010	good	5	9

¹ID's are hyperlinked to detailed contaminant source information where available. Click once to open the spreadsheet, then click again to follow the link.

²Estimated horizontal accuracy: < 25m. = good; 25m. to 50m. = fair; >50m. = poor

³Score range: 1 to 5, see Table 3 of the Iowa Source Water Protection and Assessment plan

⁴Sum of land use, capture zone, and aquifer susceptibility risk factors

Table 2a. Inventory of water wells not used in source water area.

Ames Public Water Supply (8503039)
Phase I - Inventory of Wells

Aquifer: Alluvial Highly Susceptible (risk factor =)

Map No.	Well ID ¹	Well Owner	Well ID Source	Depth (ft.)	Date Drilled/ permitted	Well Location	Locational Accuracy ²
Capture zone: 2-year time of travel (risk factor = 3)							
1	2152316	<Null>	Private well tracking system	75	4/3/1976	T. 83 N., R. 24W., Sec. 11, NE, NE, SE, NE, NE	good
2	8292	Ames Water Treatment Plant	Water Use Permit Wells	150	unkn	T. 83N., R. 24W., Sec. 11, NE, SE, NE	fair
3	8296	Ames Water Treatment Plant	Water Use Permit Wells	150	unkn	T. 83N., R. 24W., Sec. 12, NW, NW, NW	fair
4	48588	Asgrow Seed Company	IGS well database	75	4/3/1976	T. 83N., R. 24W., Sec. 11, NE, SE, NE, NW	poor
5	8295	Ames Water Treatment Plant	Water Use Permit Wells	150	unkn	T. 83N., R. 24W., Sec. 12, NW, SW, NW	fair
6	8293	Ames Water Treatment Plant	Water Use Permit Wells	150	unkn	T. 83N., R. 24W., Sec. 11, NE, SE, SE	fair
7	8294	Ames Water Treatment Plant	Water Use Permit Wells	150	unkn	T. 83N., R. 24W., Sec. 12, SW, NW, NW	fair
8	2139456	<Null>	Private well tracking system	70	12/12/2008	T. 83 N., R. 24W., Sec. 13, NW, NW, NE, NE, NE	good
9	8297	Ames Water Treatment Plant	Water Use Permit Wells	150	unkn	T. 83N., R. 24W., Sec. 13, NW, SW, NE	fair
10	8298	Ames Water Treatment Plant	Water Use Permit Wells	150	unkn	T. 83N., R. 24W., Sec. 13, SW, NE, NW	fair
11	2122827	<Null>	Private well tracking system	74	12/1/2006	T. 83 N., R. 24W., Sec. 13, SE, NE, NW, SE, SE	good
Capture zone: 5-year time of travel (risk factor = 2)							
1	5328	Ames, City Of	IGS well database	96	6/1/1951	T. 83N., R. 24W., Sec. 11, NE, NW, SW, NW	poor
2	5257	Ames, City Of	IGS well database	86	7/1/1951	T. 83N., R. 24W., Sec. 11, NE, SW, NW, SW	poor
3	5327	Ames, City Of	IGS well database	79	6/1/1951	T. 83N., R. 24W., Sec. 11, NE, NW, NE, SE	poor
4	8337	Plating Company, Industrial	Registered abandoned wells	unkn	n.a.	T. 83 N., R. 24 W., Sec. 11, NE, NW, SE	poor
5	8038	Rowell, H.G.	IGS well database	105	1/1/1956	T. 83N., R. 24W., Sec. 11, NE, SW, SW, SW	poor
6	5329	Ames, City Of	IGS well database	80	6/1/1951	T. 83N., R. 24W., Sec. 11, NE, NW, SE, SE	poor
Capture zone: 10-year time of travel (risk factor = 1)							
1	2128039	Burke, William	Private well tracking system	97	1/1/1950	T. 83 N., R. 24W., Sec. 11, SW, NW, NW, SE, SW	good
2	8301	Ames Water Treatment Plant	Water Use Permit Wells	150	unkn	T. 83N., R. 24W., Sec. 1, SW	poor
3	8300	Ames Water Treatment Plant	Water Use Permit Wells	150	unkn	T. 83N., R. 24W., Sec. 1, SW	poor
4	45163	Forestry Dept(forest Nursery)	IGS well database	95	<Null>	T. 83N., R. 24W., Sec. 14, NE, NE, NW, NW	poor
5	11653	Idnr State Forest Nursery	Water Use Permit Wells	120	unkn	T. 83N., R. 24W., Sec. 14, NE, SE, SW	poor
6	2121574	Barton, Thomas	Private well tracking system	180	9/12/2006	T. 83 N., R. 24W., Sec. 13, SE, NW, SE, SE, SE	good

¹Well id's are hyperlinked to detailed well information where available.

Click once to open the spreadsheet, then click again to follow the link.

²Estimated horizontal accuracy: < 25m. = good; 25m. to 50m. = fair; >50m. = poor

Table 2b. Inventory of water wells not used in the Buried Sand and Gravel aquifer's source water area.

Ames Public Water Supply (8503039)
Phase I - Inventory of Wells

Aquifer: Buried Sand and Gravel Susceptible (risk factor =)

Map No.	Well ID ¹	Well Owner	Well ID Source	Depth (ft.)	Date Drilled/ permitted	Well Location	Locational Accuracy ²
Capture zone: 2-year time of travel (risk factor = 3)							
1	2172397	<Null>	Private well tracking system	154	1/1/1955	T. 83 N., R. 24W., Sec. 3, NW, SE, SE, SE, NW	good
2	11665	Isu Facilities Water System	Water Use Permit Wells	168	unkn	T. 83N., R. 24W., Sec. 3, SW, SW, NW	poor
3	11664	Isu Facilities Water System	Water Use Permit Wells	168	unkn	T. 83N., R. 24W., Sec. 4, SE, SE, NE	poor
4	21775	Ames Water Works, c/o City Of Ames	Registered abandoned wells	118	n.a.	T. 83 N., R. 24 W., Sec. 3, SW, NW	poor
5	2150892	<Null>	Private well tracking system	108	1/1/1900	T. 83 N., R. 24W., Sec. 3, NW, SE, NE, SE, SW	good
6	1288	Iowa State University	Public wells	120	10/1/1940	T. 83N., R. 24W., Sec. 3,	poor
7	1288	Iowa State University	Public wells	120	10/1/1940	T. 83N., R. 24W., Sec. 3,	poor
8	8291	Ames Water Treatment Plant	Water Use Permit Wells	150	unkn	T. 83N., R. 24W., Sec. 3, SW, SW, NE	fair
9	8290	Ames Water Treatment Plant	Water Use Permit Wells	150	unkn	T. 83N., R. 24W., Sec. 3, SW, SE, NW	fair
10	5252	Ames, City Of	IGS well database	119	10/1/1951	T. 83N., R. 24W., Sec. 3, SE, NW, NW, NE	poor
11	2169823	Wulf, Larry	Private well tracking system	180	6/25/2013	T. 83 N., R. 24W., Sec. 3, SW, NW, SE, SE, NW	good
12	2173929	,	Private well tracking system	-99	<Null>	T. 83 N., R. 24W., Sec. 3, NE, NE, SE, NE, SE	good
13	8299	Ames Water Treatment Plant	Water Use Permit Wells	150	unkn	T. 83N., R. 24W., Sec. 3, SE, NW, SE	fair
14	8289	Ames Water Treatment Plant	Water Use Permit Wells	150	unkn	T. 83N., R. 24W., Sec. 3, SE, NE, NE	fair
15	2020858	,	Private well tracking system	118	7/1/1951	T. 83 N., R. 24W., Sec. 3, SW, SW, NW, SE, SE	good
16	2101488	Smith, Charles	Private well tracking system	22	1/1/1910	T. 83 N., R. 24W., Sec. 2, NW, SE, SE, NW, NE	good
17	5250	Ames, City Of	IGS well database	115	7/1/1951	T. 83N., R. 24W., Sec. 10, SE, SE, NW, SW	poor
18	16750	Timmons (heidi H. Layton), John	Registered abandoned wells	15	n.a.	T. 83 N., R. 24 W., Sec. 3, SE, SE, NE	poor
19	8288	Ames Water Treatment Plant	Water Use Permit Wells	150	unkn	T. 83N., R. 24W., Sec. 2, SW, NW, NW	fair
20	16744	Timmons (heidi H. Layton), John	Registered abandoned wells	15	n.a.	T. 83 N., R. 24 W., Sec. 3, SE, SE, NE	poor
21	8284	Ames Water Treatment Plant	Water Use Permit Wells	150	unkn	T. 83N., R. 24W., Sec. 3, SE, SE, SE	fair
22	16749	Timmons (heidi H. Layton), John	Registered abandoned wells	15	n.a.	T. 83 N., R. 24 W., Sec. 3, SE, SE, NE	poor
23	8287	Ames Water Treatment Plant	Water Use Permit Wells	150	unkn	T. 83N., R. 24W., Sec. 2, SW, NW, NW	fair
24	5248	Ames, City Of	IGS well database	94	7/1/1951	T. 83N., R. 24W., Sec. 10, NE, NE, NW, NW	poor
25	17009	Iowa D.o.t., Iowa D.o.t.	Registered abandoned wells	15	n.a.	T. 83 N., R. 24 W., Sec. 3, SE, SE, SE	poor
26	17037	Iowa Dept Of Transportati	Registered abandoned wells	15	n.a.	T. 83 N., R. 24 W., Sec. 3, SE, SE, SE	poor
27	45588	KeRR McGee Refining Co.	Registered abandoned wells	14	n.a.	T. 83 N., R. 24 W., Sec. 2, SW, SW, NW	poor
28	45585	KeRR McGee Refining Co.	Registered abandoned wells	14	n.a.	T. 83 N., R. 24 W., Sec. 2, SW, SW, NW	poor
29	36115	Iowa Dept Of Transportati	Registered abandoned wells	20	n.a.	T. 83 N., R. 24 W., Sec. 10, NE, NE, SW	poor
30	45586	KeRR McGee Refining Co.	Registered abandoned wells	19	n.a.	T. 83 N., R. 24 W., Sec. 2, SW, SW, NW	poor
31	5254	Ames, City Of	IGS well database	146	10/1/1951	T. 83N., R. 24W., Sec. 2, NW, NE, SW, SW	poor
32	45587	KeRR McGee Refining Co.	Registered abandoned wells	14	n.a.	T. 83 N., R. 24 W., Sec. 2, SW, SW, NW	poor
33	8285	Ames Water Treatment Plant	Water Use Permit Wells	150	unkn	T. 83N., R. 24W., Sec. 2, SW, NW, NE	fair
34	16303	Iowa D.o.t., Iowa D.o.t.	Registered abandoned wells	18	n.a.	T. 83 N., R. 24 W., Sec. 10, NE, NE, SE	poor
35	27952	Ia Dept Of Transportation	Registered abandoned wells	20	n.a.	T. 83 N., R. 24 W., Sec. 10, NE, NE, SE	poor
36	42649	Iowa Dot	Registered abandoned wells	20	n.a.	T. 83 N., R. 24 W., Sec. 10, NE, NE, SE	poor

37	36118	Iowa Dept Of Transportati	Registered abandoned wells	20	n.a.	T. 83 N., R. 24 W., Sec. 10, NE, NE, SE	poor
38	42650	Iowa Dot	Registered abandoned wells	20	n.a.	T. 83 N., R. 24 W., Sec. 10, NE, NE, SE	poor
39	16302	Iowa D.o.t., Iowa D.o.t.	Registered abandoned wells	25	n.a.	T. 83 N., R. 24 W., Sec. 10, NE, NE, SE	poor
40	36122	Iowa Dept Of Transportati	Registered abandoned wells	15	n.a.	T. 83 N., R. 24 W., Sec. 10, NE, NE, SE	poor
41	16298	Iowa D.o.t., Iowa D.o.t.	Registered abandoned wells	8	n.a.	T. 83 N., R. 24 W., Sec. 10, NE, NE, SE	poor
42	16301	Iowa D.o.t., Iowa D.o.t.	Registered abandoned wells	25	n.a.	T. 83 N., R. 24 W., Sec. 10, NE, NE, SE	poor
43	2075997	Petrich, Jacob	Private well tracking system	30	1/1/1930	T. 83 N., R. 24W., Sec. 2, SE, NE, NW, NE, NW	good
44	36119	Iowa Dept Of Transportati	Registered abandoned wells	20	n.a.	T. 83 N., R. 24 W., Sec. 10, NE, NE, SE	poor
45	8266	Us Postal Service, #2	Registered abandoned wells	20	n.a.	T. 83 N., R. 24 W., Sec. 2, SW, NE, NW	poor
46	36116	Iowa Dept Of Transportati	Registered abandoned wells	20	n.a.	T. 83 N., R. 24 W., Sec. 10, NE, NE, SE	poor
47	36117	Iowa Dept Of Transportati	Registered abandoned wells	20	n.a.	T. 83 N., R. 24 W., Sec. 10, NE, NE, SE	poor
48	35387	Former Friedrich and Sons	Registered abandoned wells	20	n.a.	T. 83 N., R. 24 W., Sec. 2, SW, SW, NE	poor
49	16304	Iowa D.o.t., Iowa D.o.t.	Registered abandoned wells	18	n.a.	T. 83 N., R. 24 W., Sec. 10, NE, NE, SE	poor
50	8265	Us Postal Service, #1	Registered abandoned wells	20	n.a.	T. 83 N., R. 24 W., Sec. 2, SW, NE, NW	poor
51	36121	Iowa Dept Of Transportati	Registered abandoned wells	20	n.a.	T. 83 N., R. 24 W., Sec. 10, NE, NE, SE	poor
52	36120	Iowa Dept Of Transportati	Registered abandoned wells	20	n.a.	T. 83 N., R. 24 W., Sec. 10, NE, NE, SE	poor
53	36123	Iowa Dept Of Transportati	Registered abandoned wells	20	n.a.	T. 83 N., R. 24 W., Sec. 10, NE, NE, SE	poor
54	8281	Ames Water Treatment Plant	Water Use Permit Wells	150	unkn	T. 83N., R. 24W., Sec. 2, SW, SW, SE	fair
55	2157901	<Null>	Private well tracking system	305	5/3/2012	T. 83 N., R. 24W., Sec. 2, NE, NW, NW, NE, NW	good
56	8283	Ames Water Treatment Plant	Water Use Permit Wells	150	unkn	T. 83N., R. 24W., Sec. 2, SW, NE, NE	fair
57	1903	Ames Daily Tribune	Registered abandoned wells	99	n.a.	T. 83 N., R. 24 W., Sec. 2, SW, NE	poor
58	8315	Ames Water Treatment Plant	Water Use Permit Wells	90	6/1/2007	T. 83N., R. 24W., Sec. 2	poor
59	8313	Ames Water Treatment Plant	Water Use Permit Wells	90	6/1/2007	T. 83N., R. 24W., Sec. 2	poor
60	21753	Steenland, Melanie	Registered abandoned wells	60	n.a.	T. 83 N., R. 24 W., Sec. 2	poor
61	8312	Ames Water Treatment Plant	Water Use Permit Wells	90	6/1/2007	T. 83N., R. 24W., Sec. 2	poor
62	1290	Partnership Indep.	Registered abandoned wells	unkn	n.a.	T. 83 N., R. 24 W., Sec. 2	poor
63	18504	Smith, Keith & Virginia	Registered abandoned wells	24	n.a.	T. 83 N., R. 24 W., Sec. 2	poor
64	8314	Ames Water Treatment Plant	Water Use Permit Wells	90	6/1/2007	T. 83N., R. 24W., Sec. 2	poor
65	8280	Ames Water Treatment Plant	Water Use Permit Wells	150	unkn	T. 83N., R. 24W., Sec. 2, SW, SE, SW	fair
66	8282	Ames Water Treatment Plant	Water Use Permit Wells	150	unkn	T. 83N., R. 24W., Sec. 2, SE, NW, NW	fair
67	35228	Kemps Service Station	Registered abandoned wells	20	n.a.	T. 83 N., R. 24 W., Sec. 2, SW, SE, NE	poor
68	2147624	Howe, Ken	Private well tracking system	85	5/25/2010	T. 83 N., R. 24W., Sec. 11, NW, NW	good
69	35226	Kemps Service Station	Registered abandoned wells	20	n.a.	T. 83 N., R. 24 W., Sec. 2, SW, SE, NE	poor
70	23584	Kemp, Bryce, Kemp's Serv. Station	Registered abandoned wells	19	n.a.	T. 83 N., R. 24 W., Sec. 2, SW, SE, NE	poor
71	35232	Kemps Service Station	Registered abandoned wells	28	n.a.	T. 83 N., R. 24 W., Sec. 2, SW, SE, NE	poor
72	35234	Kemps Service Station	Registered abandoned wells	20	n.a.	T. 83 N., R. 24 W., Sec. 2, SW, SE, NE	poor
73	35229	Kemps Service Station	Registered abandoned wells	15	n.a.	T. 83 N., R. 24 W., Sec. 2, SW, SE, NE	poor
74	35231	Kemps Service Station	Registered abandoned wells	20	n.a.	T. 83 N., R. 24 W., Sec. 2, SW, SE, NE	poor
75	23586	Kemp, Bryce, Kemp's Serv. Station	Registered abandoned wells	14	n.a.	T. 83 N., R. 24 W., Sec. 2, SW, SE, NE	poor
76	35233	Kemps Service Station	Registered abandoned wells	24	n.a.	T. 83 N., R. 24 W., Sec. 2, SW, SE, NE	poor
77	23585	Kemp, Bryce, Kemp's Serv. Station	Registered abandoned wells	14	n.a.	T. 83 N., R. 24 W., Sec. 2, SW, SE, NE	poor
78	35230	Kemps Service Station	Registered abandoned wells	16	n.a.	T. 83 N., R. 24 W., Sec. 2, SW, SE, NE	poor
79	35227	Kemps Service Station	Registered abandoned wells	20	n.a.	T. 83 N., R. 24 W., Sec. 2, SW, SE, NE	poor
80	5418	Ames, City Of	IGS well database	117	1/16/1952	T. 83N., R. 24W., Sec. 2, SW, SE, NE, SE	poor
81	23745	Doolittle Oil Company	Registered abandoned wells	unkn	n.a.	T. 83 N., R. 24 W., Sec. 2, SW, SE, SE	poor

82	23744	Doolittle Oil Company	Registered abandoned wells	unkn	n.a.	T. 83 N., R. 24 W., Sec. 2, SW, SE, SE	poor
83	28873	Kemp, Bryce	Registered abandoned wells	20	n.a.	T. 83 N., R. 24 W., Sec. 2, SW, SE, SE	poor
84	23741	Doolittle Oil Company	Registered abandoned wells	unkn	n.a.	T. 83 N., R. 24 W., Sec. 2, SW, SE, SE	poor
85	23746	Doolittle Oil Company	Registered abandoned wells	unkn	n.a.	T. 83 N., R. 24 W., Sec. 2, SW, SE, SE	poor
86	8286	Ames Water Treatment Plant	Water Use Permit Wells	150	unkn	T. 83N., R. 24W., Sec. 2, SW, SE, SE	fair
87	8279	Ames Water Treatment Plant	Water Use Permit Wells	150	unkn	T. 83N., R. 24W., Sec. 2, SE, NW, SW	fair
88	23743	Doolittle Oil Company	Registered abandoned wells	unkn	n.a.	T. 83 N., R. 24 W., Sec. 2, SW, SE, SE	poor
89	23742	Doolittle Oil Company	Registered abandoned wells	unkn	n.a.	T. 83 N., R. 24 W., Sec. 2, SW, SE, SE	poor
90	23747	Doolittle Oil Company	Registered abandoned wells	unkn	n.a.	T. 83 N., R. 24 W., Sec. 2, SW, SE, SE	poor
91	8278	Ames Water Treatment Plant	Water Use Permit Wells	150	unkn	T. 83N., R. 24W., Sec. 2, SE, SW, NW	fair
92	24834	Story Co. Human Services	Permitted private wells	115	3/16/1999	T. 83 N., R. 24 W., Sec. 11, NW, NE, NE	poor
93	8302	Ames Water Treatment Plant	Water Use Permit Wells	150	unkn	T. 83N., R. 24W., Sec. 2, SE	poor
94	5328	Ames, City Of	IGS well database	96	6/1/1951	T. 83N., R. 24W., Sec. 11, NE, NW, SW, NW	poor
95	5327	Ames, City Of	IGS well database	79	6/1/1951	T. 83N., R. 24W., Sec. 11, NE, NW, NE, SE	poor

Capture zone: 5-year time of travel (risk factor = 2)

1	2161715	,	Private well tracking system	-99	<Null>	T. 83 N., R. 24W., Sec. 4, NE, NE, SW, SE, NE	good
2	2161714	,	Private well tracking system	-99	<Null>	T. 83 N., R. 24W., Sec. 4, NE, NE, SW, NE, SE	good
3	23706	Iowa State University	Registered abandoned wells	unkn	n.a.	T. 83 N., R. 24 W., Sec. 4, SE	poor
4	23707	Iowa State University	Registered abandoned wells	unkn	n.a.	T. 83 N., R. 24 W., Sec. 4, SE	poor
5	22683	Iowa State, University	Registered abandoned wells	unkn	n.a.	T. 83 N., R. 24 W., Sec. 4, SE	poor
6	22684	Iowa State, University	Registered abandoned wells	unkn	n.a.	T. 83 N., R. 24 W., Sec. 4, SE	poor
7	40456	Iowa State University	Public wells	0	<Null>	T. 83N., R. 24W., Sec. 4,	poor
8	40456	Iowa State University	Public wells	0	<Null>	T. 83N., R. 24W., Sec. 4,	poor
9	40455	Iowa State University	Public wells	0	<Null>	T. 83N., R. 24W., Sec. 4,	poor
10	37334	Iowa State University	Registered abandoned wells	23	n.a.	T. 83 N., R. 24 W., Sec. 4, SE, NE, NE	poor
11	37329	Iowa State University	Registered abandoned wells	20	n.a.	T. 83 N., R. 24 W., Sec. 4, SE, NE, NE	poor
12	37330	Iowa State University	Registered abandoned wells	20	n.a.	T. 83 N., R. 24 W., Sec. 4, SE, NE, NE	poor
13	37333	Iowa State University	Registered abandoned wells	21	n.a.	T. 83 N., R. 24 W., Sec. 4, SE, NE, NE	poor
14	40455	Iowa State University	Public wells	0	<Null>	T. 83N., R. 24W., Sec. 4,	poor
15	40453	Iowa State University	Public wells	168	5/19/1960	T. 83N., R. 24W., Sec. 3,	poor
16	37331	Iowa State University	Registered abandoned wells	25	n.a.	T. 83 N., R. 24 W., Sec. 4, SE, NE, NE	poor
17	2410028	Isu Facilities Water System	SDWIS well	168	1/1/1960	T83N, R24W, Sec. 3, NW, SW, SW	poor
18	40453	Iowa State University	Public wells	168	5/19/1960	T. 83N., R. 24W., Sec. 3,	poor
19	37328	Iowa State University	Registered abandoned wells	20	n.a.	T. 83 N., R. 24 W., Sec. 4, SE, NE, NE	poor
20	37335	Iowa State University	Registered abandoned wells	22	n.a.	T. 83 N., R. 24 W., Sec. 4, SE, NE, NE	poor
21	37332	Iowa State University	Registered abandoned wells	22	n.a.	T. 83 N., R. 24 W., Sec. 4, SE, NE, NE	poor
22	11668	Isu Facilities Water System	Water Use Permit Wells	168	unkn	T. 83N., R. 24W., Sec. 3, NW, SW, SW	poor
23	40452	Iowa State University	Public wells	143	1/1/1955	T. 83N., R. 24W., Sec. 3,	poor
24	2410387	Isu Facilities Water System	SDWIS well	143	1/1/1955	T83N, R24W, Sec. 3, NW, SW, SW	poor
25	40452	Iowa State University	Public wells	143	1/1/1955	T. 83N., R. 24W., Sec. 3,	poor
26	40451	Iowa State University	Public wells	0	1/1/1900	T. 83N., R. 24W., Sec. 3,	poor
27	2411002	Isu Facilities Water System	SDWIS well	140	1/1/1949	T83N, R24W, Sec. 3, NW, SW, SW	poor
28	40451	Iowa State University	Public wells	0	1/1/1900	T. 83N., R. 24W., Sec. 3,	poor
29	40454	Iowa State University	Public wells	0	1/1/1900	T. 83N., R. 24W., Sec. 3,	poor

30	2408076	Isu Facilities Water System	SDWIS well	139	1/1/1969	T83N, R24W, Sec. 3, SW, NW, NW	poor
31	40454	Iowa State University	Public wells	0	1/1/1900	T. 83N., R. 24W., Sec. 3,	poor
32	18916	Isu Facilities Water System	Water Use Permit Wells	155	1/4/2013	T. 83N., R. 24W., Sec. 3, NW, SW, SE	poor
33	11667	Isu Facilities Water System	Water Use Permit Wells	168	unkn	T. 83N., R. 24W., Sec. 3, NW, SW, SE	poor
34	2151521	Scott, Robert	Private well tracking system	250	11/30/2010	T. 83 N., R. 24W., Sec. 3, NE, NW, SW, NE, NW	good
35	2151522	Scott, Robert	Private well tracking system	250	12/10/2010	T. 83 N., R. 24W., Sec. 3, NE, NW, SW, NE, NW	good
36	2131480	York, Jennifer	Private well tracking system	140	12/4/2007	T. 84 N., R. 24W., Sec. 35, SE, NW, SW, SE, NW	good
37	2171022	Strum, Jason	Private well tracking system	-99	<Null>	T. 84 N., R. 24W., Sec. 35, SE, SE, NE, NW, SW	good
38	5256	Ames, City Of	IGS well database	98	10/1/1951	T. 83N., R. 24W., Sec. 2, SW, SW, SE, NE	poor
39	5247	Ames, City Of	IGS well database	74	7/1/1951	T. 83N., R. 24W., Sec. 10, NE, NE, SW, SE	poor
40	17315	Sorenson, Ed	Registered abandoned wells	15	n.a.	T. 83 N., R. 24 W., Sec. 2, SE, SE, NW	poor
41	17316	Sorenson, Ed	Registered abandoned wells	24	n.a.	T. 83 N., R. 24 W., Sec. 2, SE, SE, NW	poor
42	17314	Sorenson, Ed	Registered abandoned wells	20	n.a.	T. 83 N., R. 24 W., Sec. 2, SE, SE, NW	poor
43	5257	Ames, City Of	IGS well database	86	7/1/1951	T. 83N., R. 24W., Sec. 11, NE, SW, NW, SW	poor
44	8337	Plating Company, Industrial	Registered abandoned wells	unkn	n.a.	T. 83 N., R. 24 W., Sec. 11, NE, NW, SE	poor
45	8038	Rowell, H.G.	IGS well database	105	1/1/1956	T. 83N., R. 24W., Sec. 11, NE, SW, SW, SW	poor
46	5329	Ames, City Of	IGS well database	80	6/1/1951	T. 83N., R. 24W., Sec. 11, NE, NW, SE, SE	poor
47	2152316	<Null>	Private well tracking system	75	4/3/1976	T. 83 N., R. 24W., Sec. 11, NE, NE, SE, NE, NE	good
48	8292	Ames Water Treatment Plant	Water Use Permit Wells	150	unkn	T. 83N., R. 24W., Sec. 11, NE, SE, NE	fair
49	8296	Ames Water Treatment Plant	Water Use Permit Wells	150	unkn	T. 83N., R. 24W., Sec. 12, NW, NW, NW	fair
50	48588	Asgrow Seed Company	IGS well database	75	4/3/1976	T. 83N., R. 24W., Sec. 11, NE, SE, NE, NW	poor

Capture zone: 10-year time of travel (risk factor = 1)

1	2132250	,	Private well tracking system	-99	<Null>	T. 83 N., R. 24W., Sec. 4, NW, SW, SE, NE, NW	good
2	2161711	,	Private well tracking system	-99	<Null>	T. 83 N., R. 24W., Sec. 4, NE, NW, NW, NW, SW	good
3	18777	Iowa State University, Ames Laboratory	Registered abandoned wells	15	n.a.	T. 83 N., R. 24 W., Sec. 4, NE, SW, SW	poor
4	18776	Iowa State University, Ames Laboratory	Registered abandoned wells	15	n.a.	T. 83 N., R. 24 W., Sec. 4, NE, SW, SW	poor
5	32979	Iowa State University	Registered abandoned wells	398	n.a.	T. 83 N., R. 24 W., Sec. 4, SW, NE, SE	poor
6	18087	Unkn	Permitted private wells	64	2/27/1995	T. 83 N., R. 24 W., Sec. 4, SW, SE	poor
7	35386	Iowa State University	Registered abandoned wells	398	n.a.	T. 83 N., R. 24 W., Sec. 4, SW, SE, NE	poor
8	2161716	,	Private well tracking system	-99	<Null>	T. 83 N., R. 24W., Sec. 4, NE, NE, NE, NW, NW	good
9	2161710	,	Private well tracking system	-99	<Null>	T. 83 N., R. 24W., Sec. 3, NW, NW, NW, NW	good
10	2161709	<Null>	Private well tracking system	151	8/20/2013	T. 83 N., R. 24W., Sec. 3, NW, NW, NW, NE, NW	good
11	2161713	,	Private well tracking system	-99	<Null>	T. 83 N., R. 24W., Sec. 3, NW, NW, SE, NW, NE	good
12	2161712	,	Private well tracking system	-99	<Null>	T. 83 N., R. 24W., Sec. 3, NW, NW, NW, SW, NE	good
13	29287	Johnson, Phil	Registered abandoned wells	unkn	n.a.	T. 83 N., R. 24 W., Sec. 9, NE, NW, SW	poor
14	2015728	Bruin, Jack	Private well tracking system	138	1/1/1950	T. 84 N., R. 24W., Sec. 34, SW, NW, SE, NW, NE	good
15	2131615	,	Private well tracking system	-99	<Null>	T. 83 N., R. 24W., Sec. 10, NW, SE, NW, SE, NE	good
16	2107637	<Null>	Private well tracking system	202	4/8/2005	T. 83 N., R. 24W., Sec. 10, NW, NW, SE, SE, NW	good
17	2170414	<Null>	Private well tracking system	45	8/21/2013	T. 84 N., R. 24W., Sec. 35, NW, SW, SE, SW, NE	good
18	2137124	<Null>	Private well tracking system	40	1/1/1990	T. 84 N., R. 24W., Sec. 35, SW, NE, NW, SW, NE	good
19	2137121	,	Private well tracking system	-99	<Null>	T. 84 N., R. 24W., Sec. 35, SW, NE, NE, SE, SE	good
20	2137122	,	Private well tracking system	-99	<Null>	T. 84 N., R. 24W., Sec. 35, SW, NE, NE, SE, NW	good
21	2137120	,	Private well tracking system	-99	<Null>	T. 84 N., R. 24W., Sec. 35, SW, NE, NE, SE, SE	good

22	2076897	Randall, Scott	Private well tracking system	50	1/29/2002	T. 83 N., R. 24W., Sec. 10, SW, SW, NW, SE, NW	good
23	18996	Ames, City Of	Permitted private wells	30	7/24/1996	T. 84 N., R. 24 W., Sec. 36, SW, NW, SW	poor
24	2081143	,	Private well tracking system	74	7/30/2002	T. 83 N., R. 24W., Sec. 10, SW, SW, NW, SE, NW	good
25	42648	Iowa Dot	Registered abandoned wells	20	n.a.	T. 83 N., R. 24 W., Sec. 10, SE, NE, SE	poor
26	6674	Legacy Golf Associates Inc	Water Use Permit Wells	80	unkn	T. 83N., R. 24W., Sec. 11, SW, SW	poor
27	2076905	Randall, Scott	Private well tracking system	65	3/29/2002	T. 83 N., R. 24W., Sec. 11, SE, SE, NW, SW, NW	good
28	6675	Legacy Golf Associates Inc	Water Use Permit Wells	80	unkn	T. 83N., R. 24W., Sec. 11, SW, SW	poor
29	2128039	Burke, William	Private well tracking system	97	1/1/1950	T. 83 N., R. 24W., Sec. 11, SW, NW, NW, SE, SW	good
30	8301	Ames Water Treatment Plant	Water Use Permit Wells	150	unkn	T. 83N., R. 24W., Sec. 1, SW	poor
31	8300	Ames Water Treatment Plant	Water Use Permit Wells	150	unkn	T. 83N., R. 24W., Sec. 1, SW	poor
32	8295	Ames Water Treatment Plant	Water Use Permit Wells	150	unkn	T. 83N., R. 24W., Sec. 12, NW, SW, NW	fair
33	8293	Ames Water Treatment Plant	Water Use Permit Wells	150	unkn	T. 83N., R. 24W., Sec. 11, NE, SE, SE	fair
34	8294	Ames Water Treatment Plant	Water Use Permit Wells	150	unkn	T. 83N., R. 24W., Sec. 12, SW, NW, NW	fair

¹Well id's are hyperlinked to detailed well information where available.

Click once to open the spreadsheet, then click again to follow the link.

²Estimated horizontal accuracy: < 25m. = good; 25m. to 50m. = fair; >50m. = poor

Table 3a. Land cover within your alluvial source water area.

Ames - Alluvial aquifer Highly Susceptible
Summary of land cover types (2012) by percentage of total

Capture zone	Row Crop	Small Grains	Other Crops	Grassland	Wetlands	Water	Developed Areas	Barren Areas	Total Acres
10-year	20.0	6.3	19.6	0.6	0.9	42.8	0.3	9.7	333
10-year	5.5	0.0	2.8	0.0	9.2	73.9	0.9	7.7	73
2-year	55.0	1.8	6.2	0.4	0.0	33.1	0.0	3.5	204
2-year	1.7	7.1	64.1	0.3	1.4	16.9	0.0	8.5	79
5-year	19.4	0.0	7.9	1.3	0.8	61.8	0.3	8.4	216
5-year	11.2	3.4	33.0	0.9	0.9	17.4	0.0	33.2	97

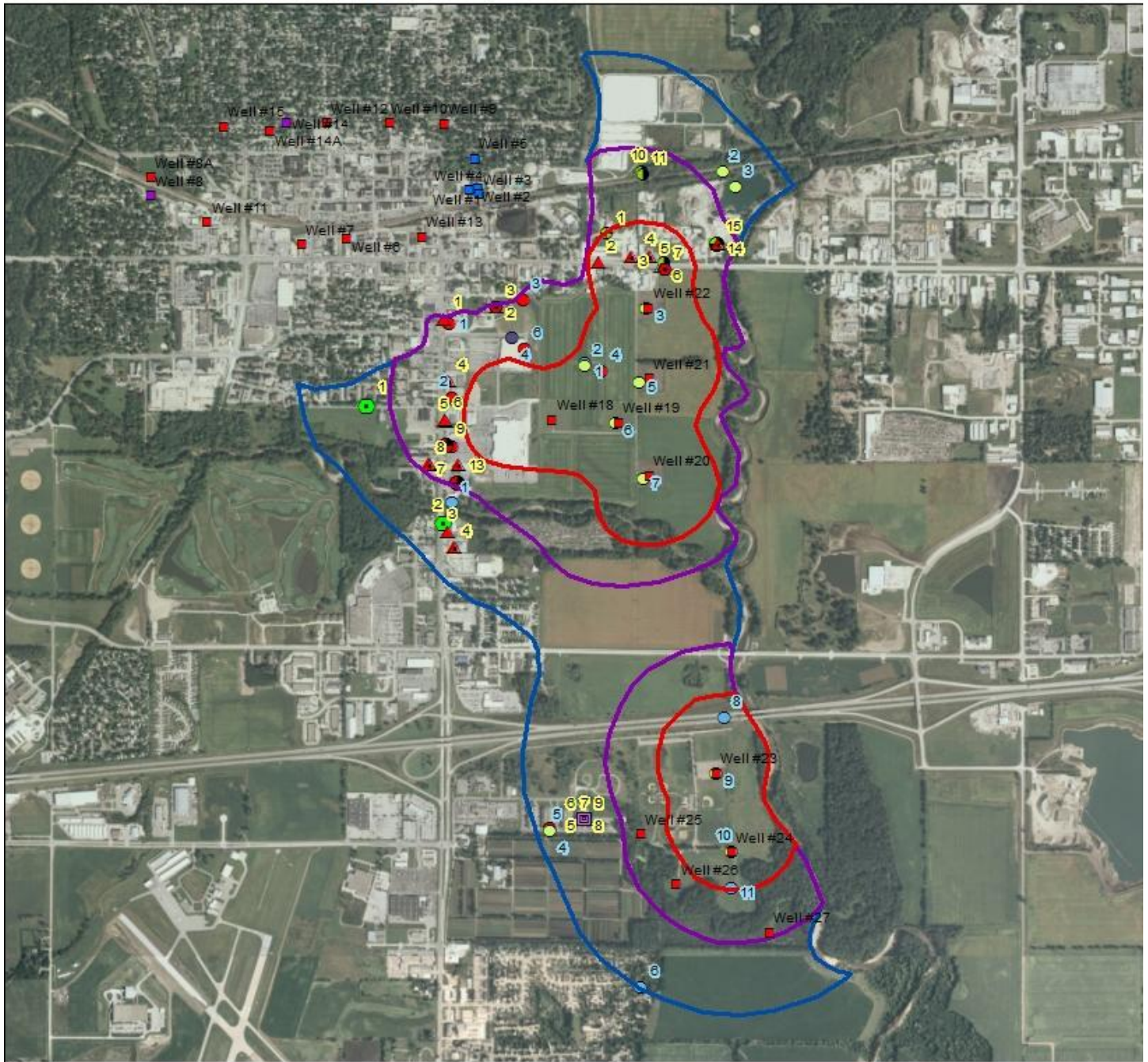
Table 3b. Land cover within the Buried Sand and Gravel aquifer's source water area.

Ames - Buried Sand and Gravel aquifer Susceptible
Summary of land cover types (2012) by percentage of total

Capture zone	Row Crop	Small Grains	Other Crops	Grassland	Wetlands	Water	Developed Areas	Barren Areas	Total Acres
10-year	8.6	0.7	14.8	0.5	1.3	63.9	0.2	9.9	1,665
2-year	0.0	0.0	1.7	0.2	0.0	95.5	0.0	2.6	853
5-year	5.4	0.0	3.0	0.1	0.2	83.3	0.0	7.9	1,014

Ames 8503039

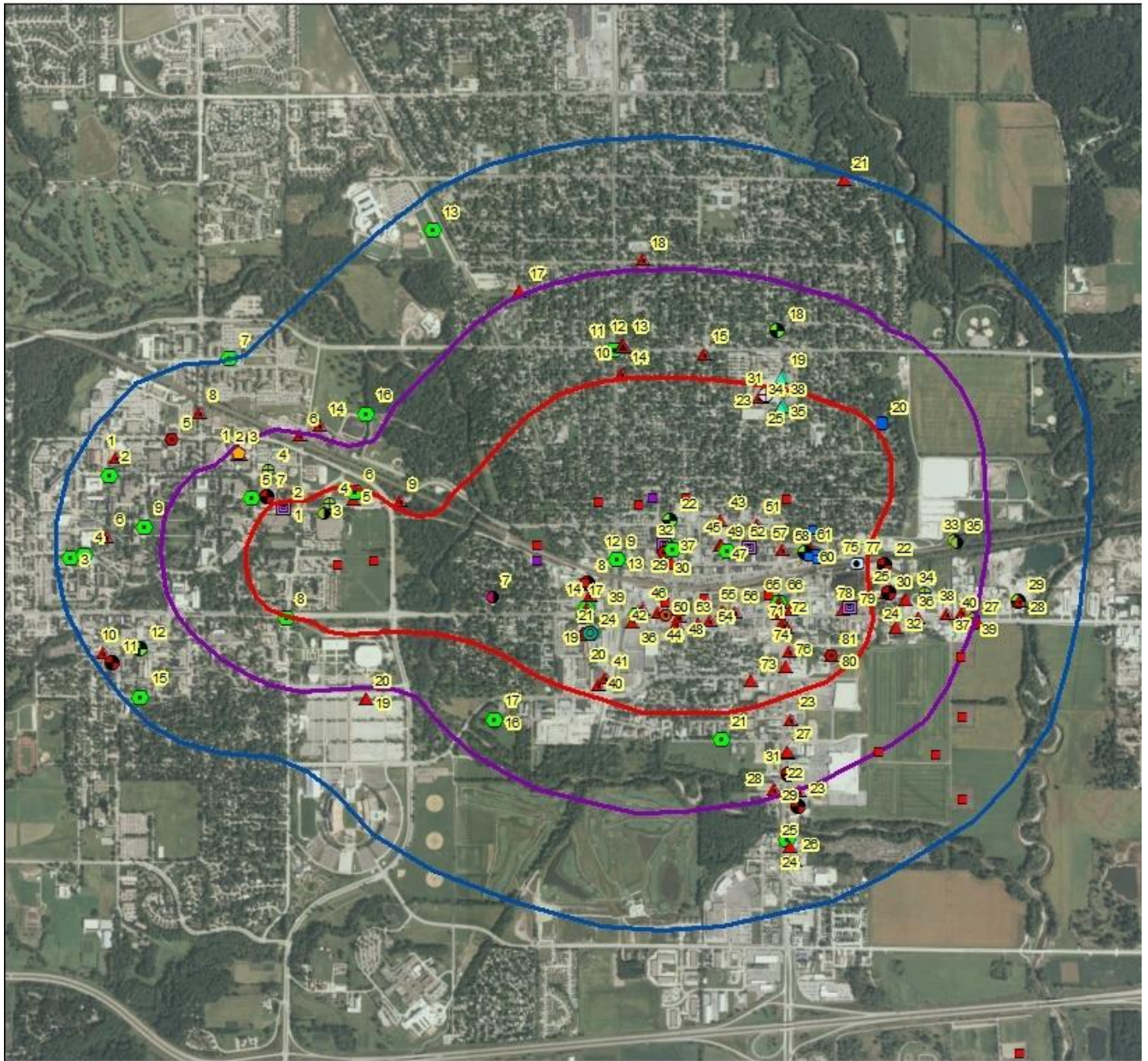
Alluvial Aquifer - Source Water Protection Area



- | Public Wells | Groundwater Capture Zones | Contaminant Sources | Other Wells |
|--|---|---|--|
| <ul style="list-style-type: none"> ■ Active ■ Not Used ■ Plugged | <ul style="list-style-type: none"> 2-Year Capture Zone 5-Year Capture Zone 10-Year Capture Zone | <ul style="list-style-type: none"> ● Air Permit - Mhor ● Contaminated sites ● Tier II Chemical Storage ● Hazardous Materials Spill ▲ Cond. Ex. Sm. quan. haz. waste gen. ▲ Underground storage tank ▲ Leaking USTs ■ Solid waste facility ● Wastewater outfall ● Wastewater treatment facility | <ul style="list-style-type: none"> ● IGS well database ● Private well tracking system ● Registered abandoned wells ● Water Use Permit Wells |

Ames 8503039 (Contaminants)

Buried Sand and Gravel Aquifer - Source Water Protection Area



0 2 Miles



Public Wells

- Active
- Not Used
- Plugged

Groundwater Capture Zones

- 2-Year Capture Zone
- 5-Year Capture Zone
- 10-Year Capture Zone

Contaminant Sources

- Air Permit - Dry Cleaner
- Air Permit - Minor
- Air Permit - Title V
- Contaminated sites
- Tier II Chemical Storage
- Hazardous III materials Spill



- Hospitals
- Cemeteries
- Cond. Ex. Sm. quan. haz. waste gen.
- Small quan. hazardous waste gen.
- Large quan. hazardous waste gen.
- ▲ Above ground fuel storage
- ▲ Underground storage tank



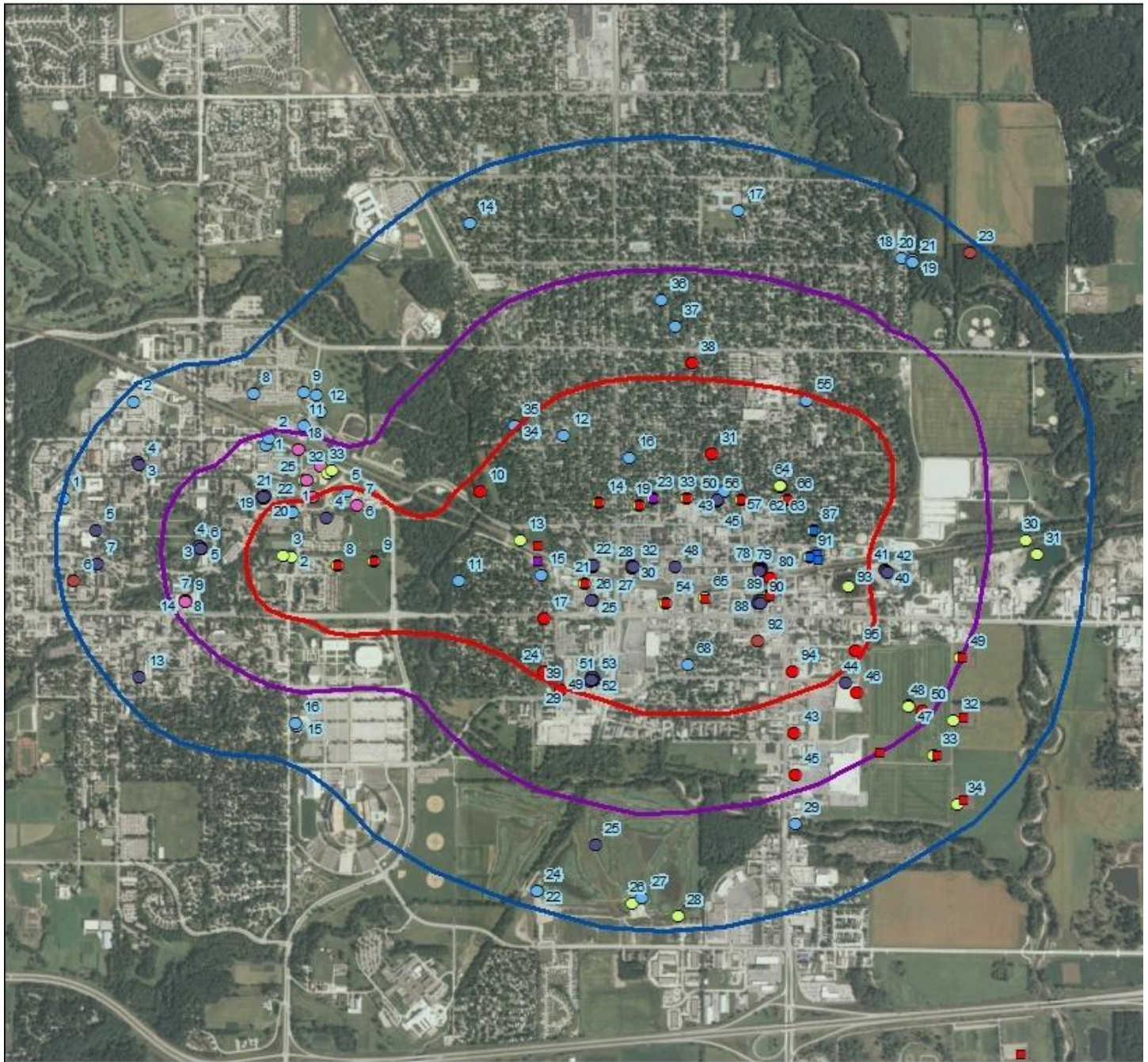
- ▲ Leaking USTs
- Solid waste facility
- Wastewater industrial contributor
- Wastewater outfall
- Wastewater treatment facility
- Toxic release inventory



Report Created: 5/30/2014

Ames 8503039 (Other Wells)

Buried Sand and Gravel Aquifer - Source Water Protection Area



0 2 Miles



Public Wells Groundwater Capture Zones Other Wells

- Active
- Not Used
- Plugged
- 2-Year Capture Zone
- 5-Year Capture Zone
- 10-Year Capture Zone

- IGS well database
- Permitted private wells
- Private well tracking system

- Public wells
- Registered abandoned wells
- SDWIS well
- Water Use Permit Wells