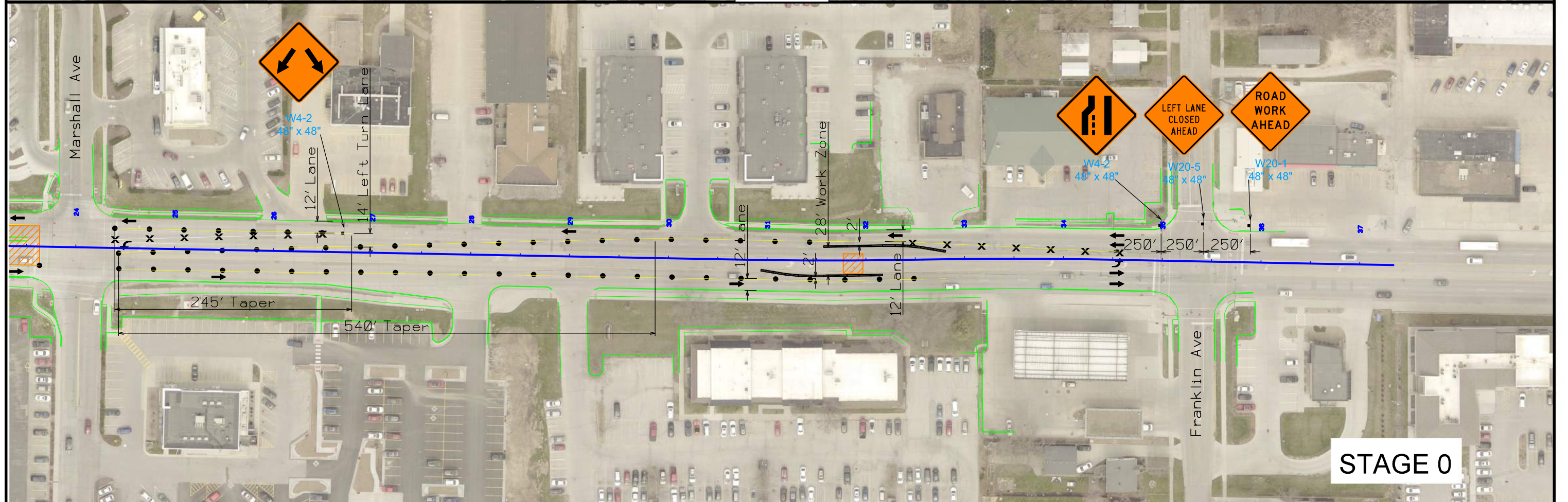
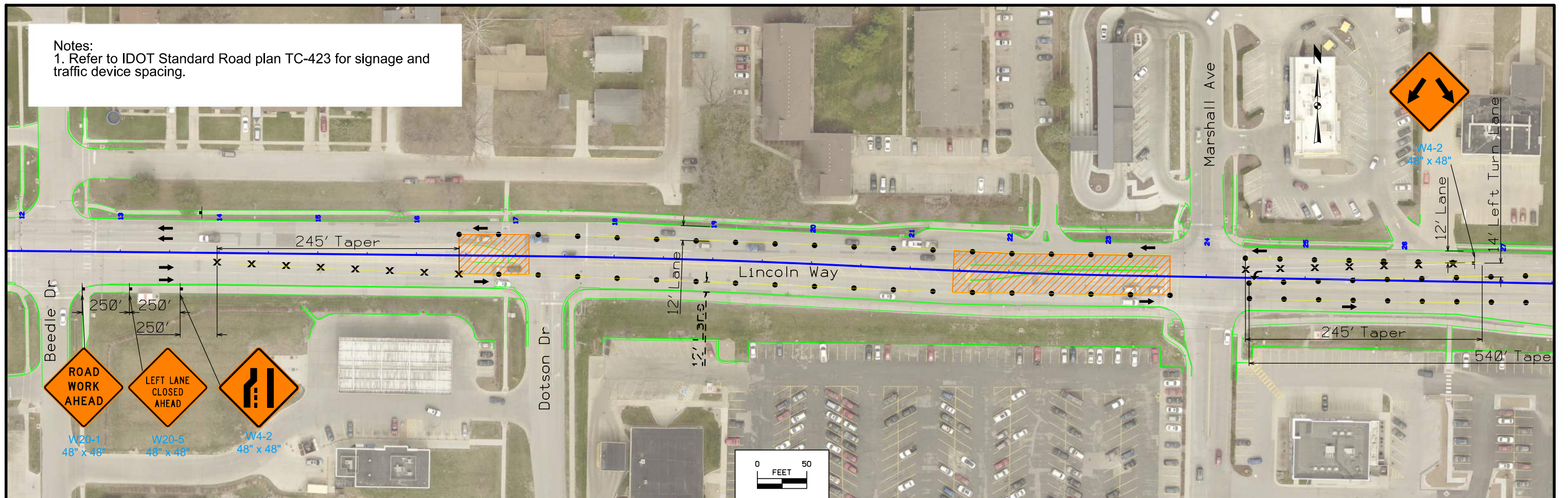
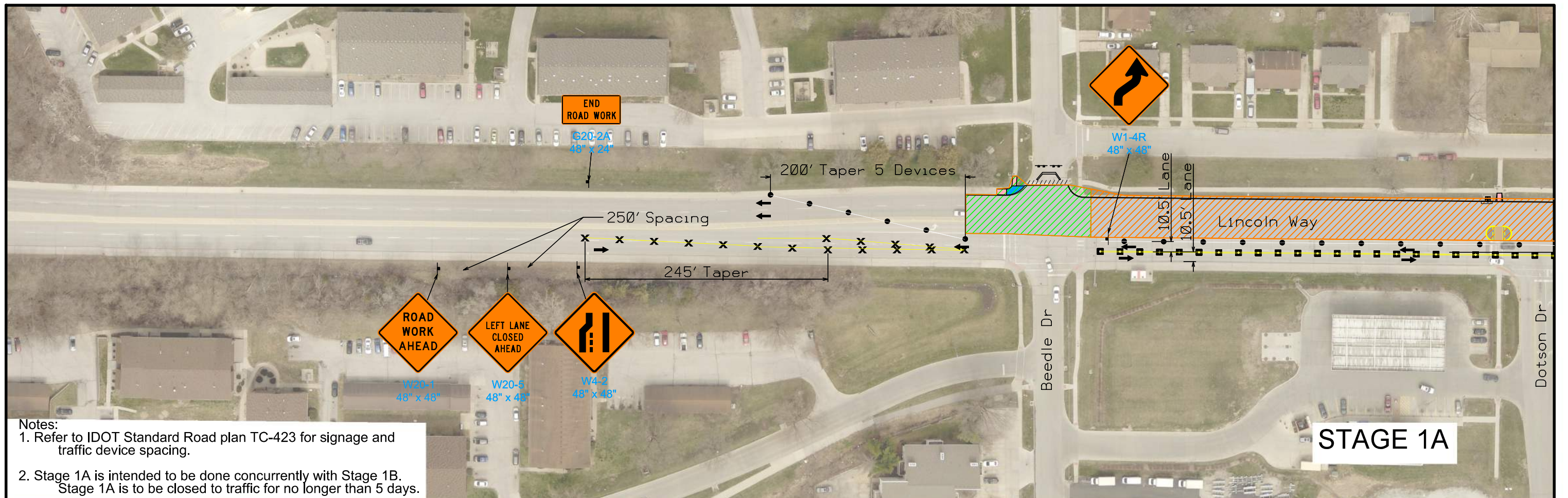


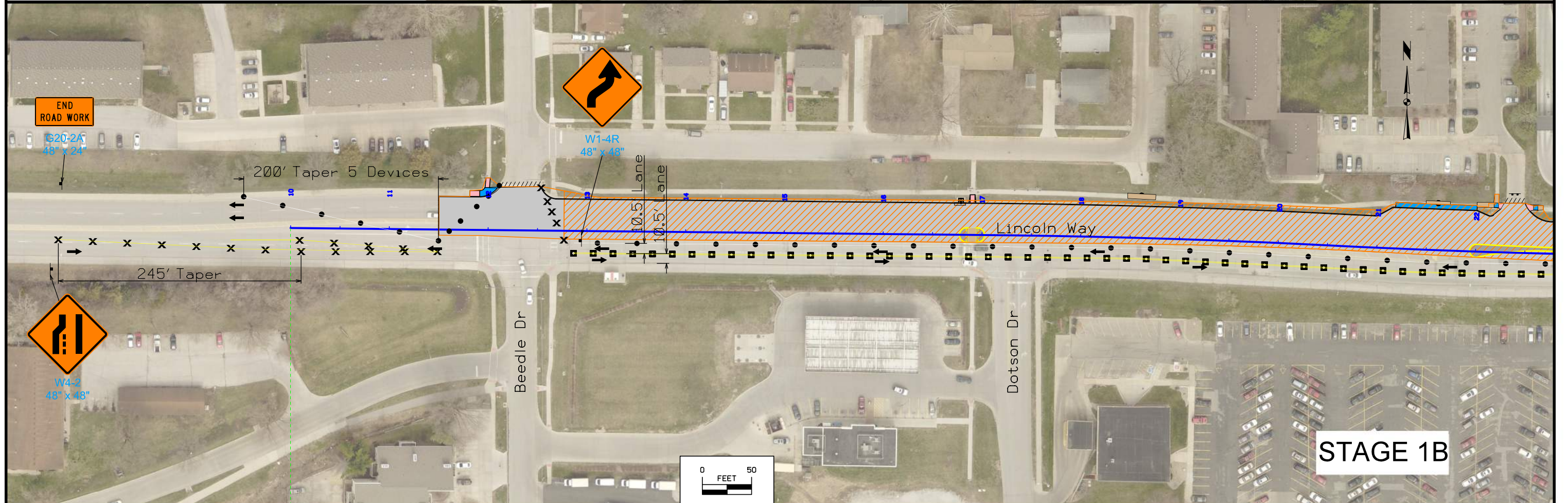
Notes:  
1. Refer to IDOT Standard Road plan TC-423 for signage and traffic device spacing.

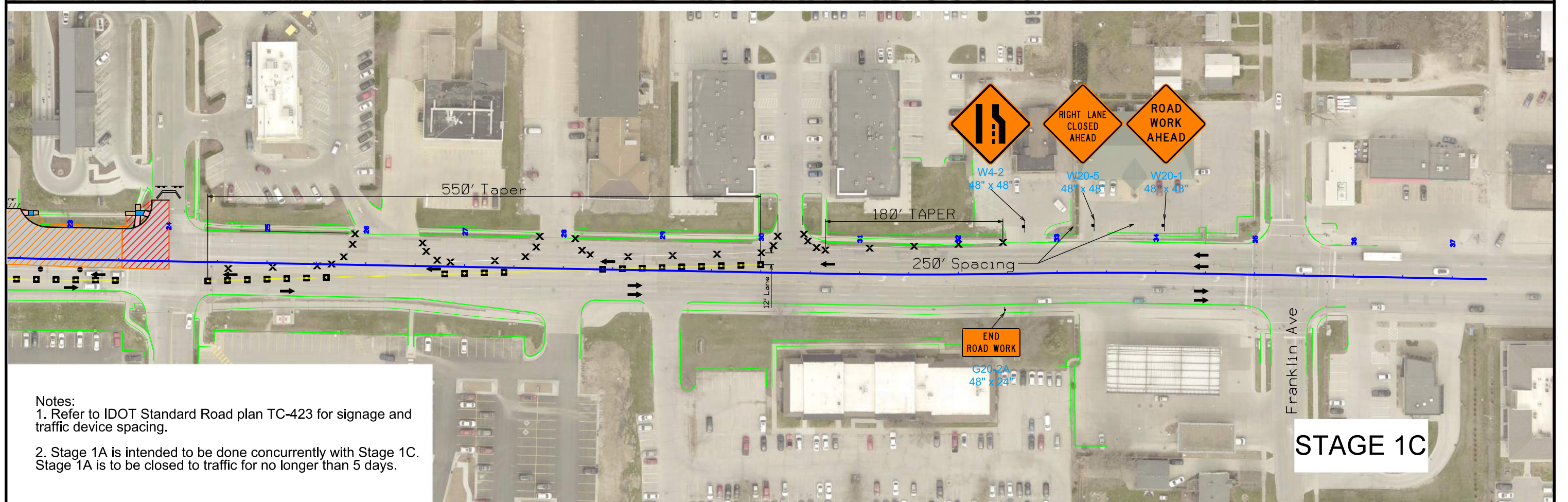
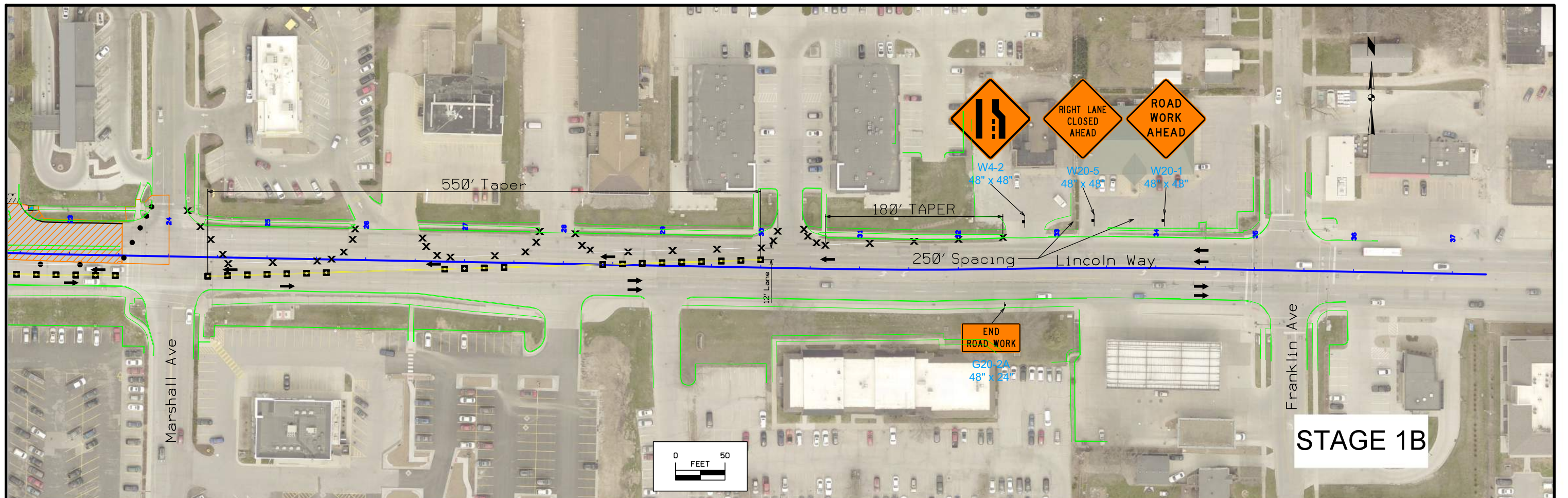


STAGE 0

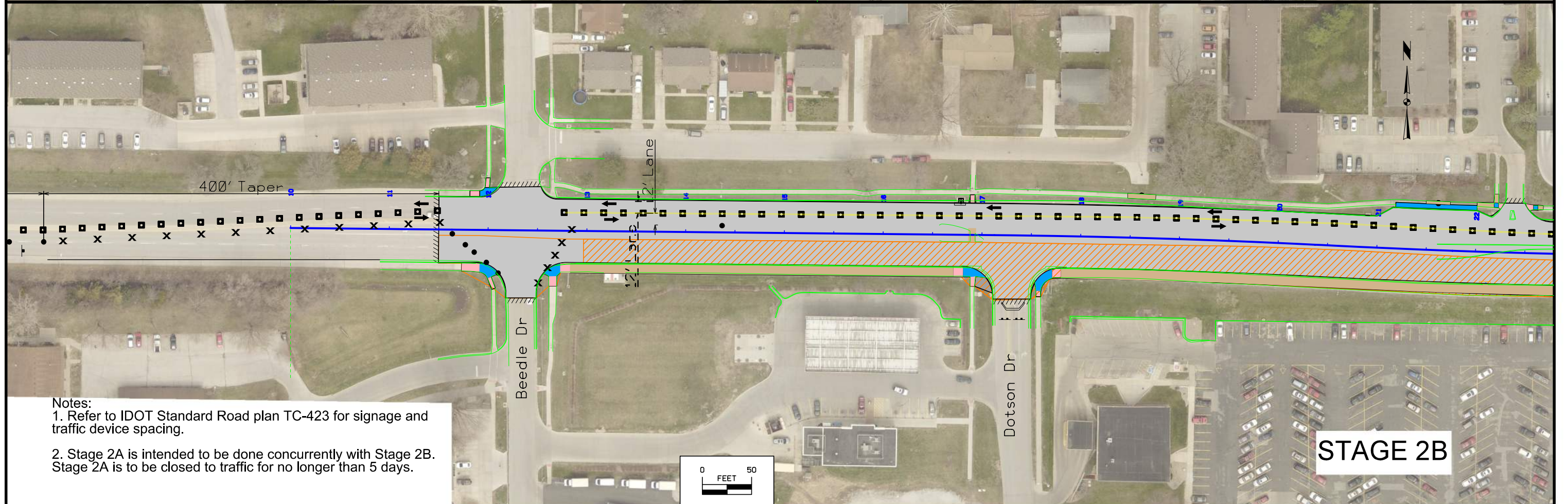
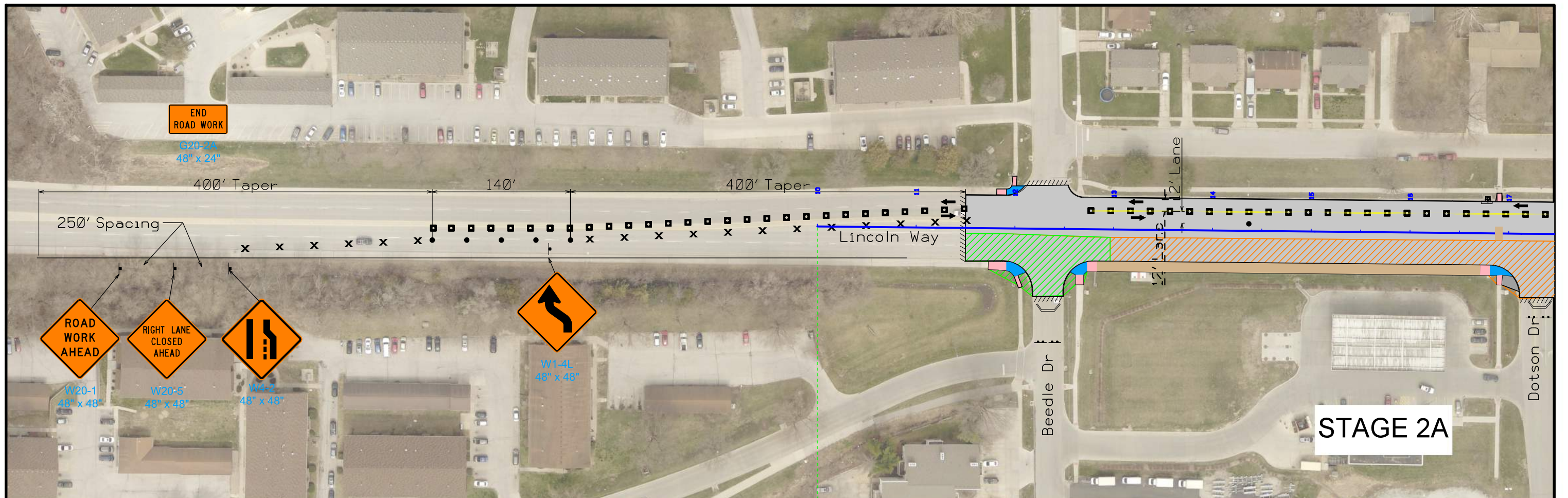


- Notes:
1. Refer to IDOT Standard Road plan TC-423 for signage and traffic device spacing.
  2. Stage 1A is intended to be done concurrently with Stage 1B. Stage 1A is to be closed to traffic for no longer than 5 days.

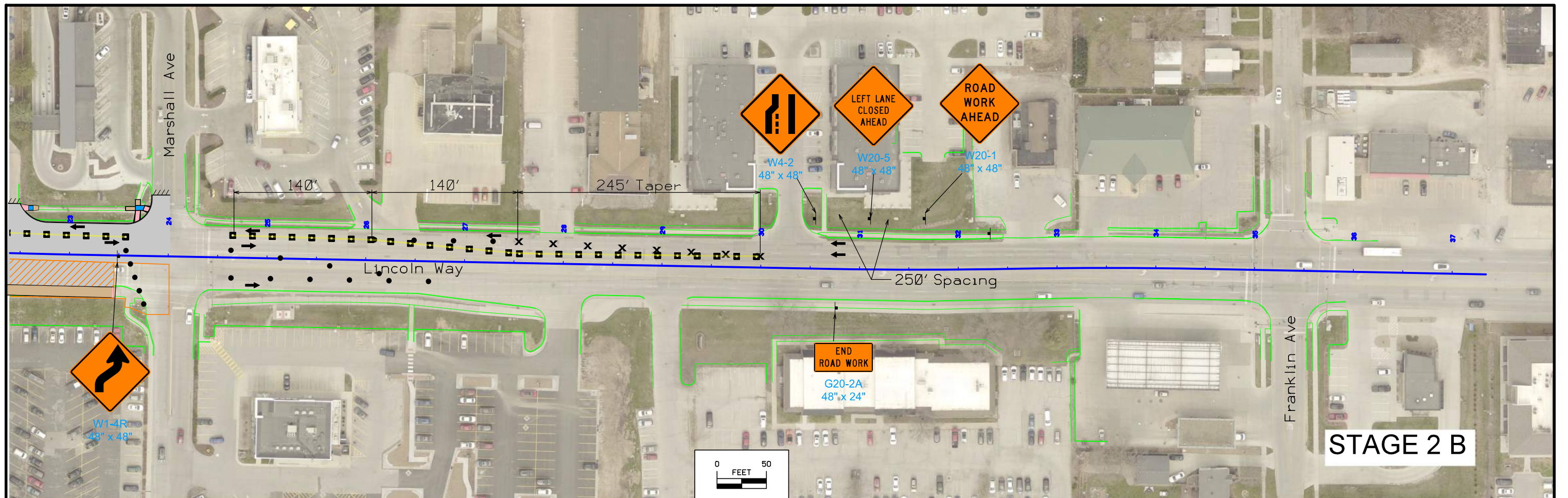




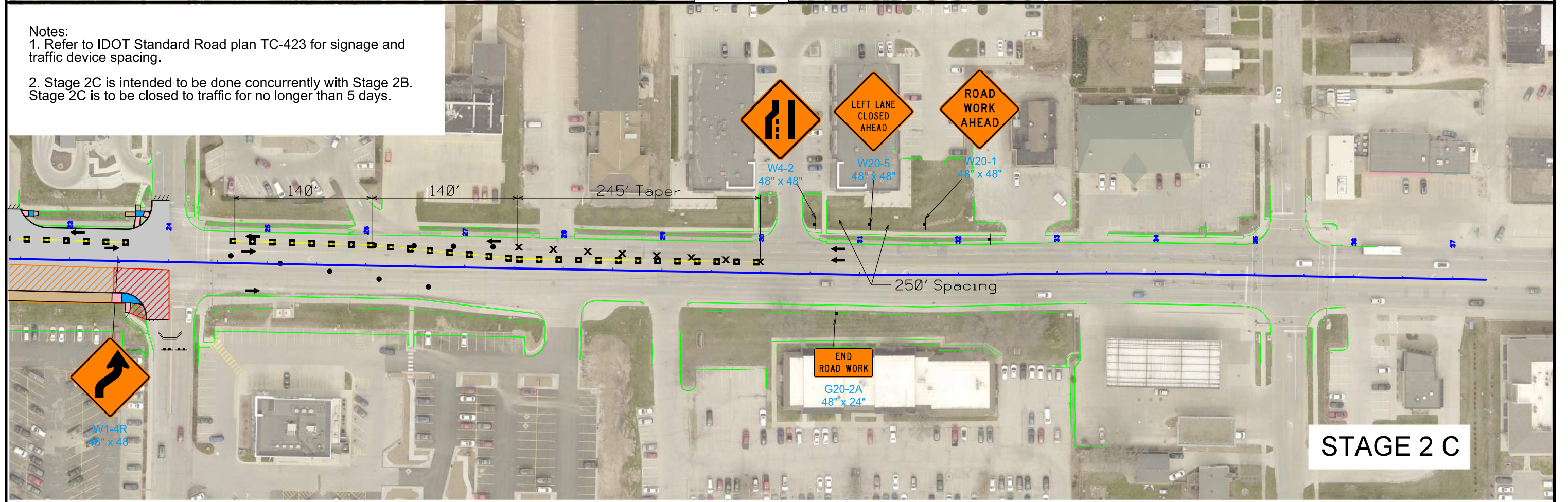
Notes:  
 1. Refer to IDOT Standard Road plan TC-423 for signage and traffic device spacing.  
 2. Stage 1A is intended to be done concurrently with Stage 1C. Stage 1A is to be closed to traffic for no longer than 5 days.

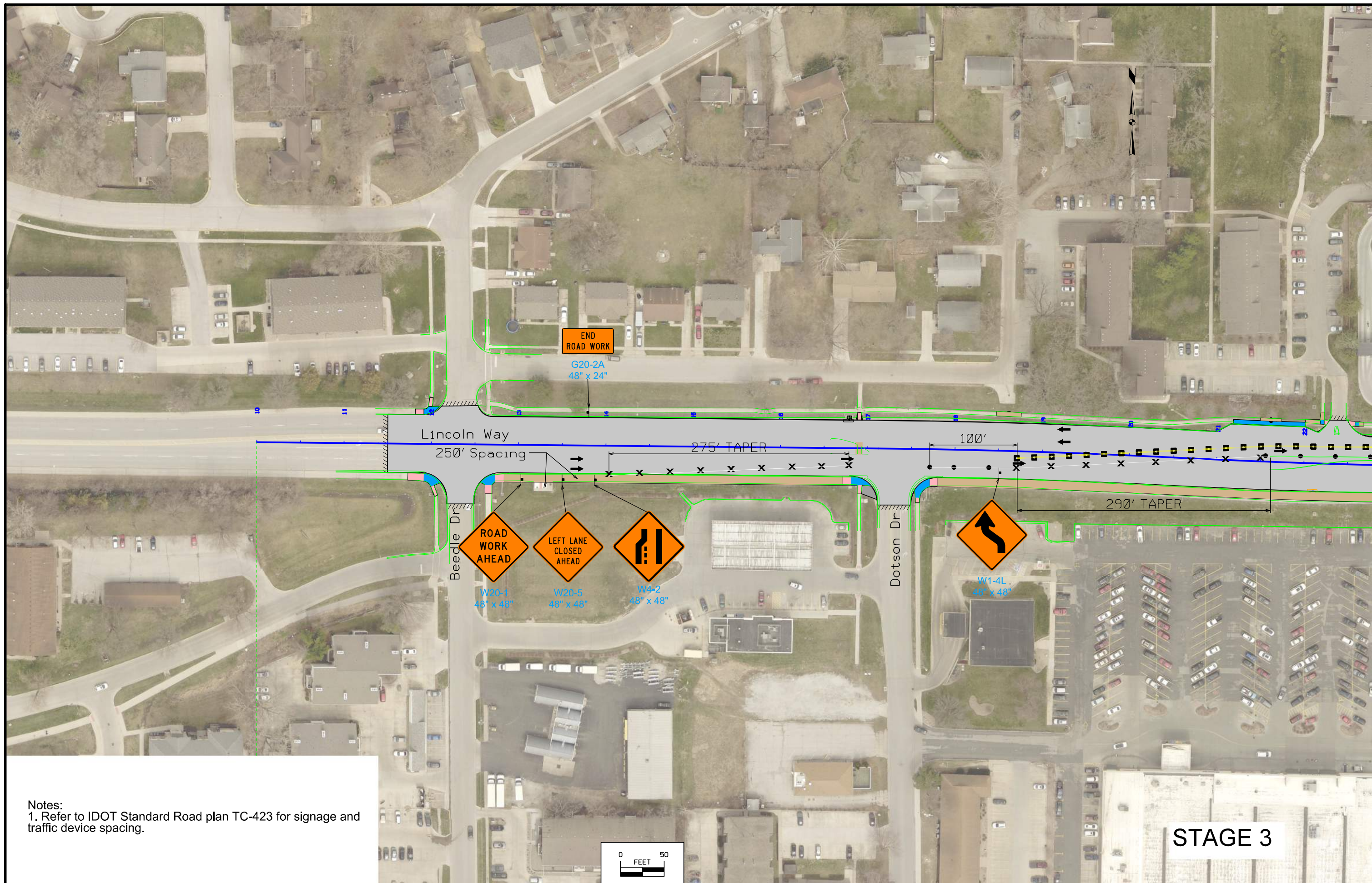


Notes:  
 1. Refer to IDOT Standard Road plan TC-423 for signage and traffic device spacing.  
 2. Stage 2A is intended to be done concurrently with Stage 2B. Stage 2A is to be closed to traffic for no longer than 5 days.

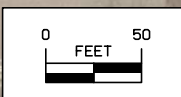


Notes:  
 1. Refer to IDOT Standard Road plan TC-423 for signage and traffic device spacing.  
 2. Stage 2C is intended to be done concurrently with Stage 2B. Stage 2C is to be closed to traffic for no longer than 5 days.

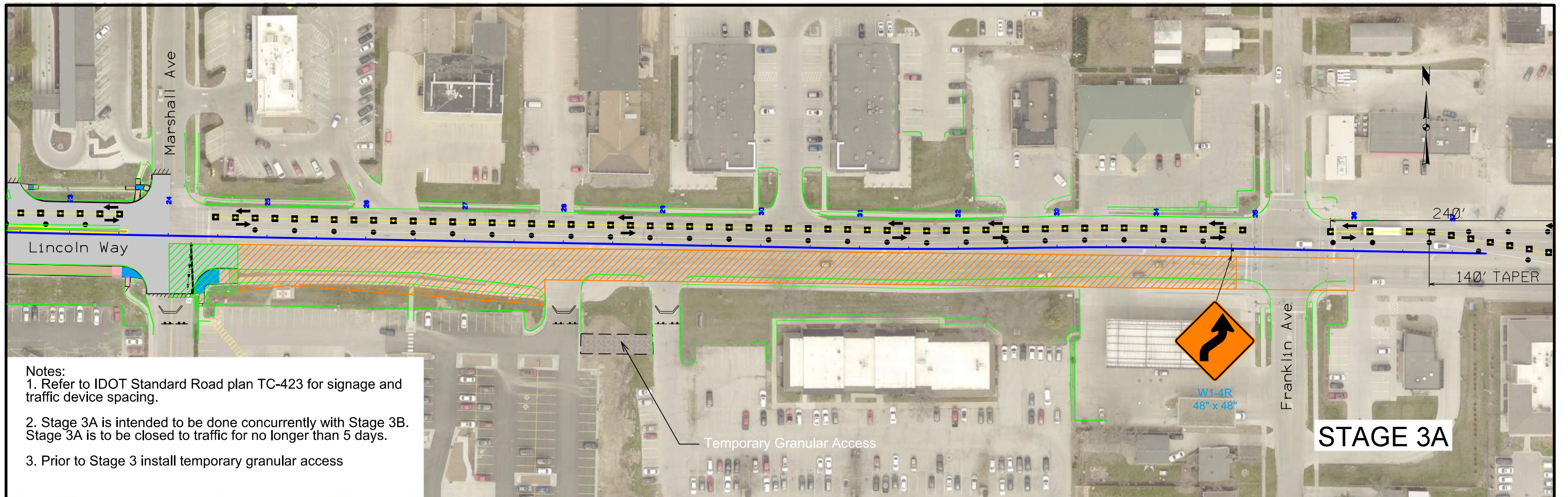




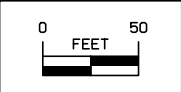
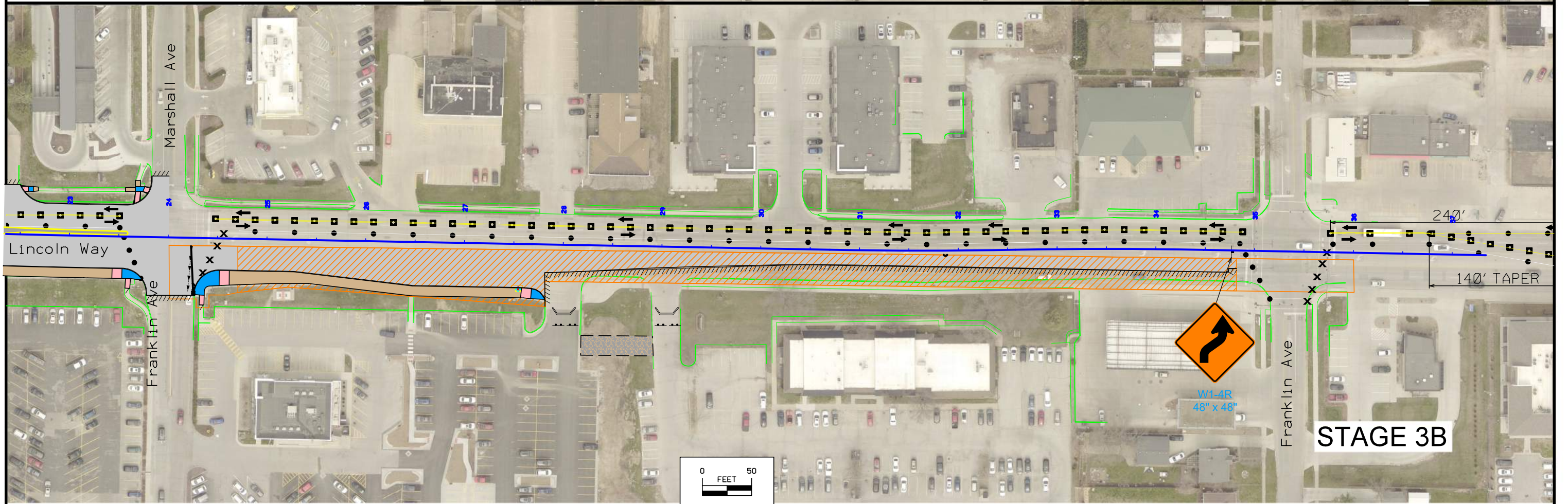
Notes:  
 1. Refer to IDOT Standard Road plan TC-423 for signage and traffic device spacing.

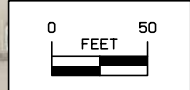
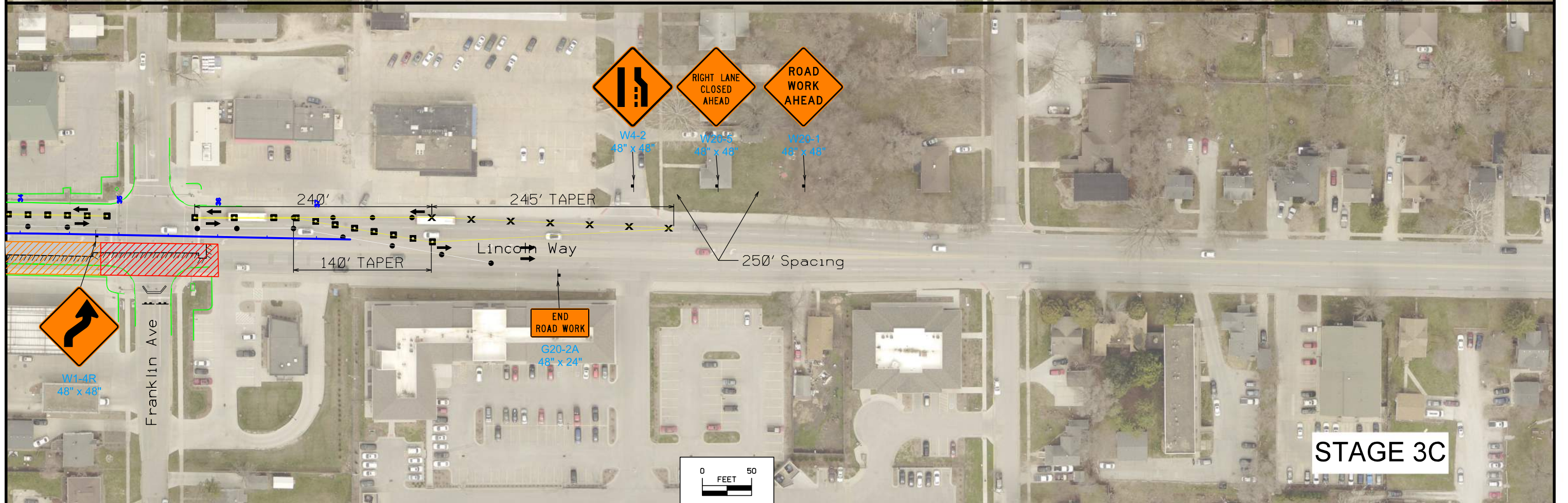
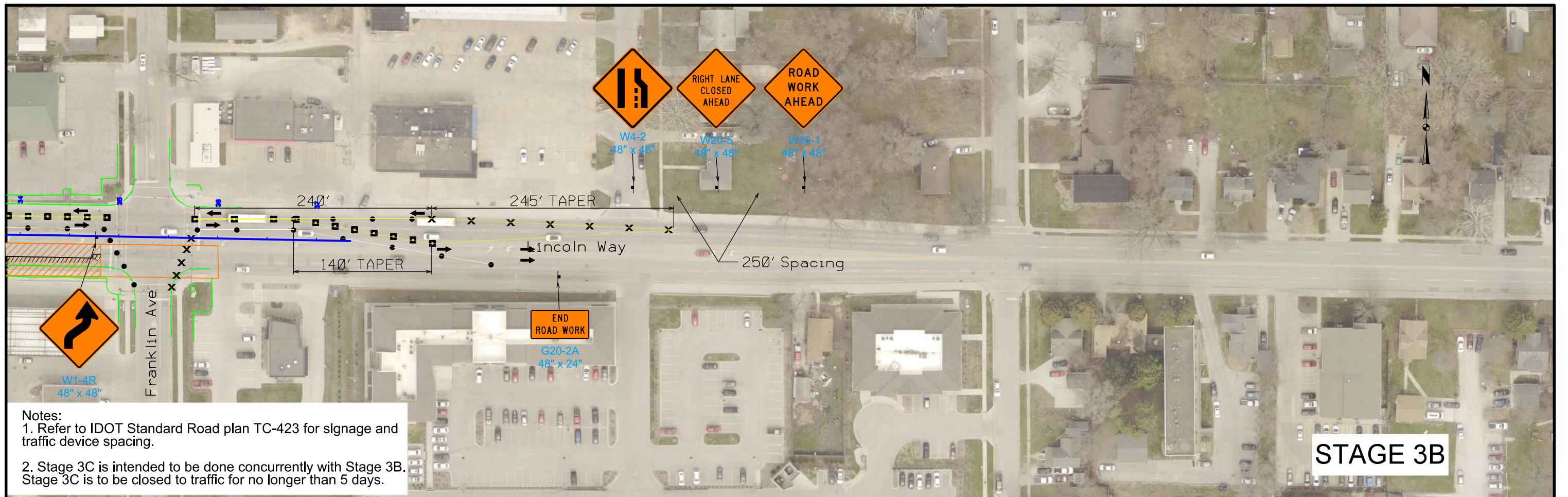


STAGE 3

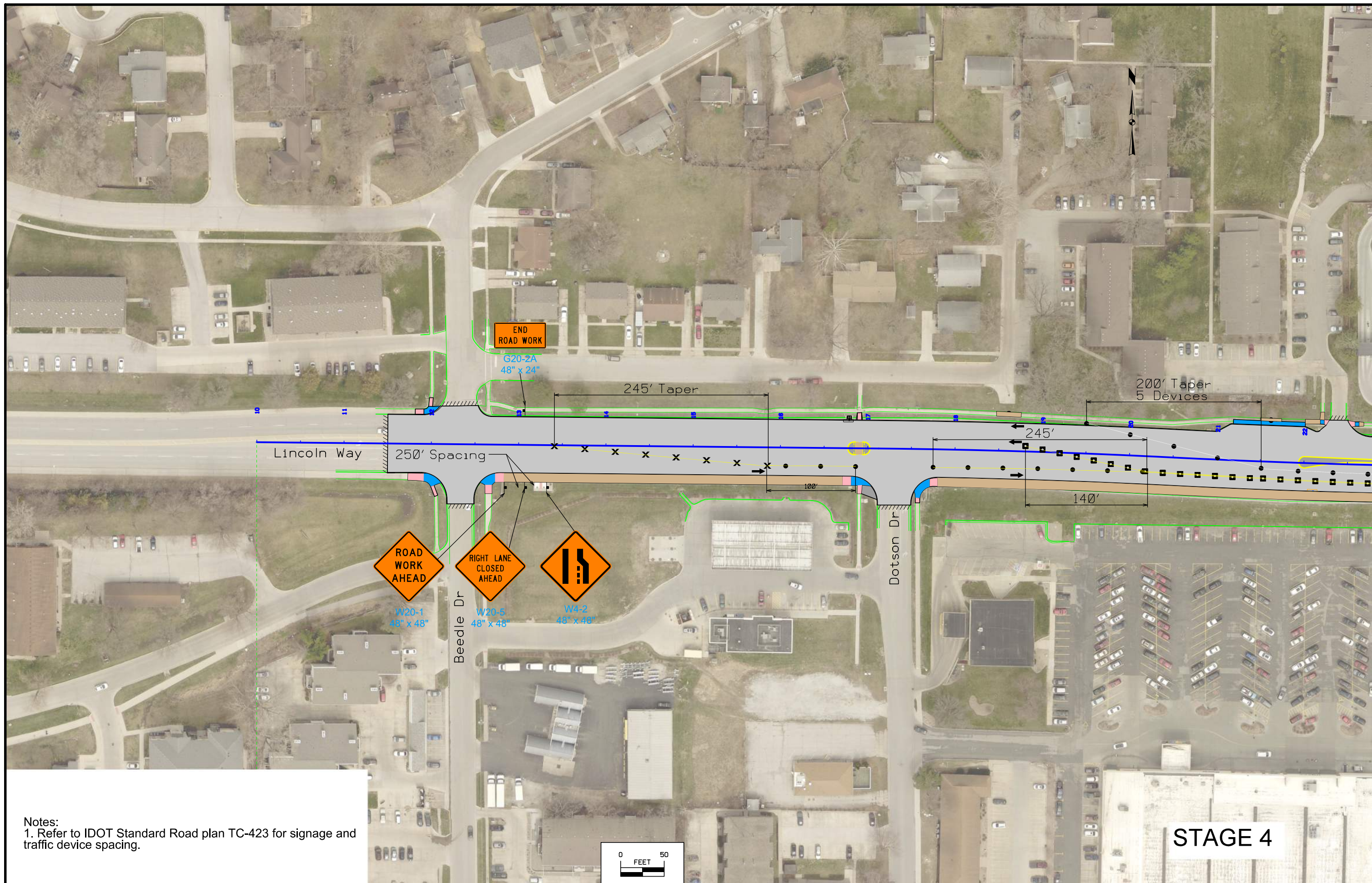


Notes:  
 1. Refer to IDOT Standard Road plan TC-423 for signage and traffic device spacing.  
 2. Stage 3A is intended to be done concurrently with Stage 3B. Stage 3A is to be closed to traffic for no longer than 5 days.  
 3. Prior to Stage 3 install temporary granular access

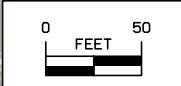




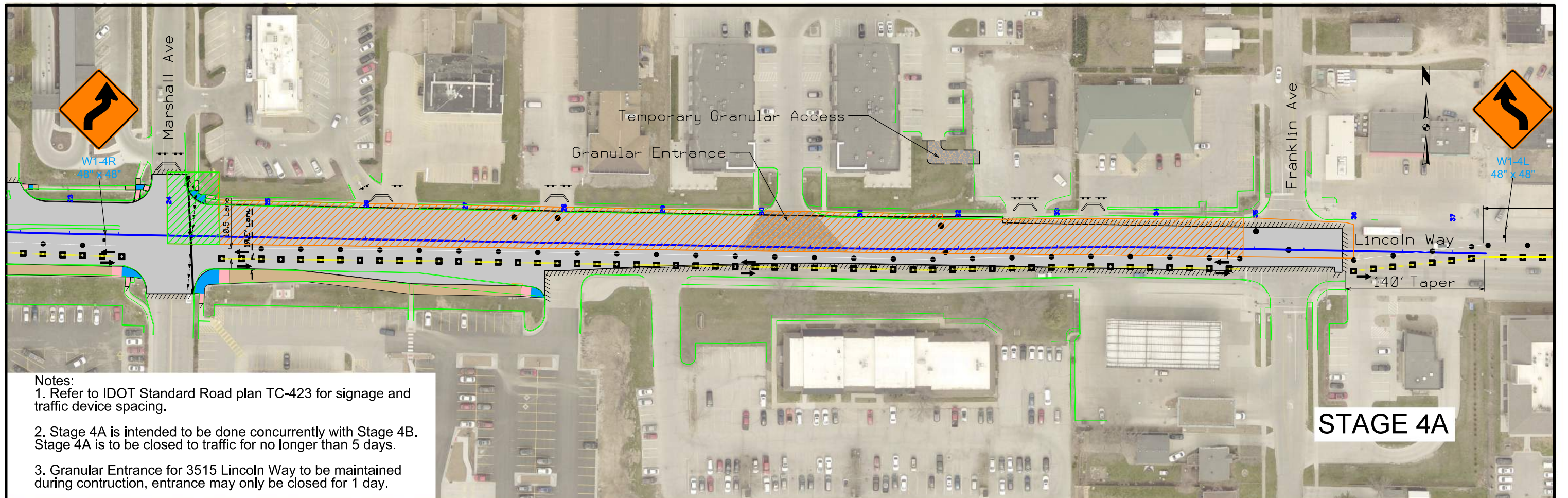




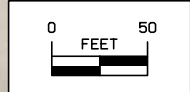
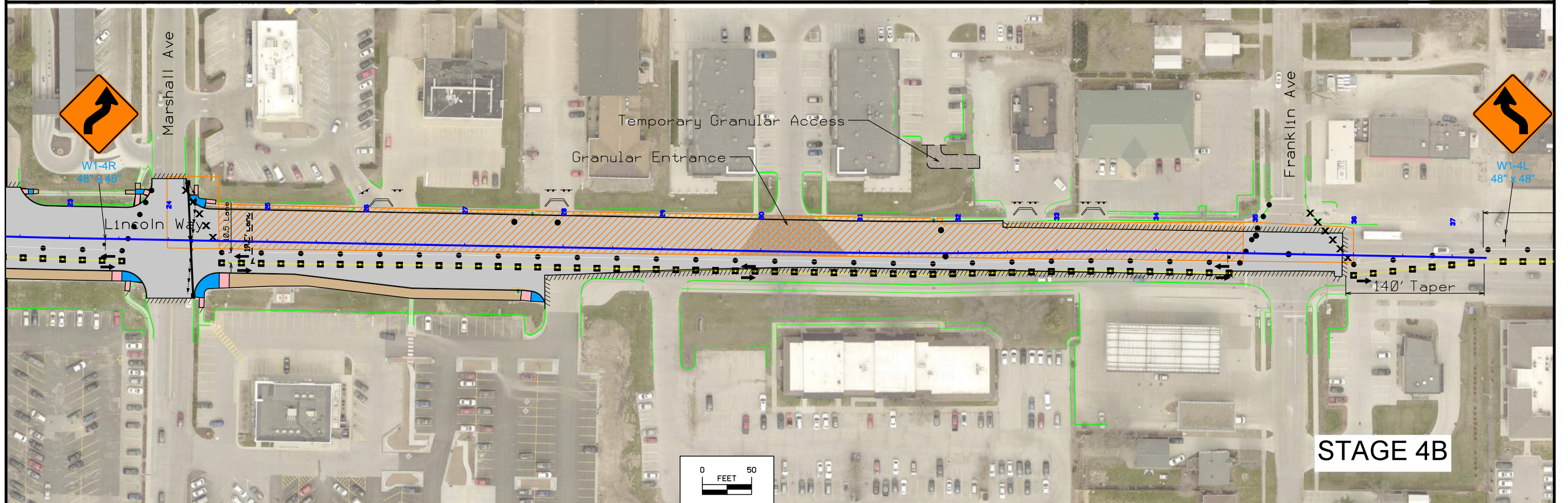
Notes:  
 1. Refer to IDOT Standard Road plan TC-423 for signage and traffic device spacing.

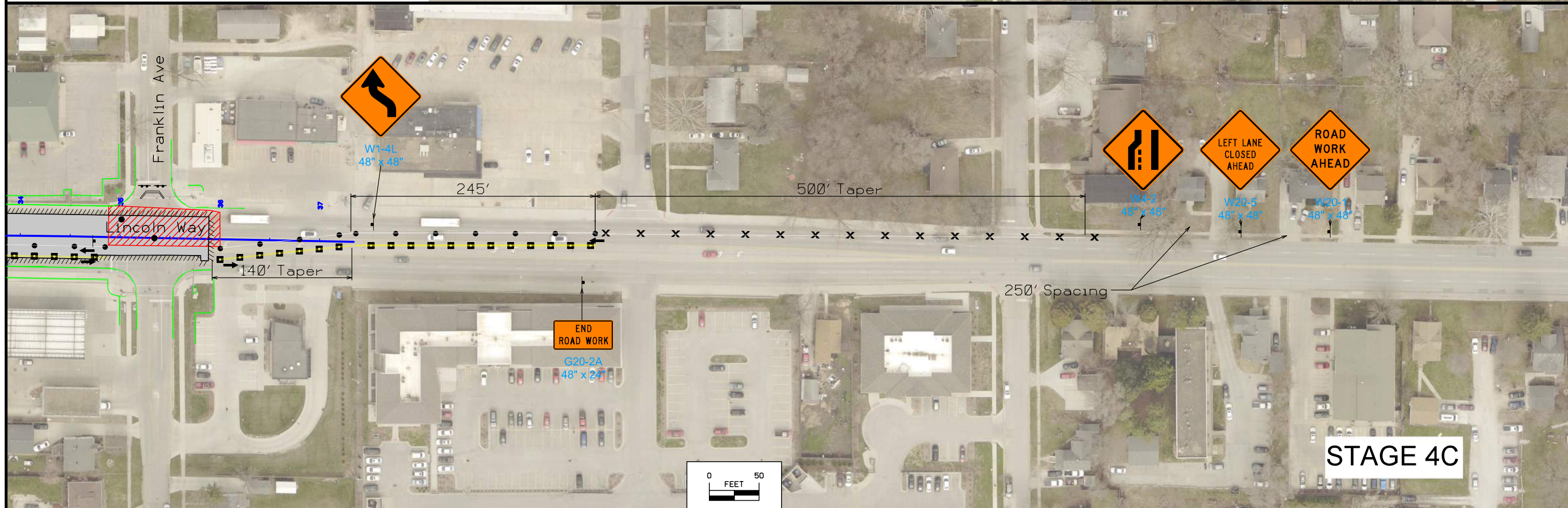
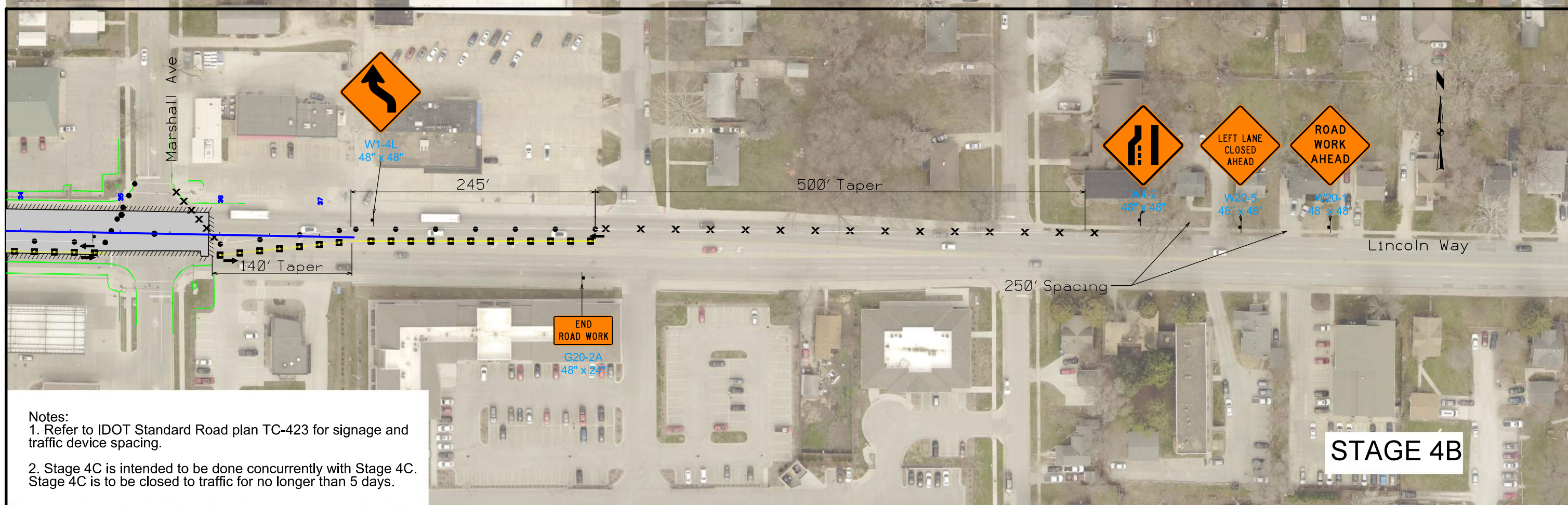


STAGE 4



- Notes:
1. Refer to IDOT Standard Road plan TC-423 for signage and traffic device spacing.
  2. Stage 4A is intended to be done concurrently with Stage 4B. Stage 4A is to be closed to traffic for no longer than 5 days.
  3. Granular Entrance for 3515 Lincoln Way to be maintained during construction, entrance may only be closed for 1 day.





Notes:  
1. Refer to IDOT Standard Road plan TC-423 for signage and traffic device spacing.

