

AMES PARKS AND RECREATION COMMISSION MEETING
City Hall Council Chambers – 515 Clark Avenue
Thursday, February 15, 2024

NOTICE TO THE PUBLIC: The Parks and Recreation Commission welcomes comments from the public during discussion. The Standards of Decorum, posted at the door and available on the City website, define respectful conduct for public participation. If you wish to speak, please complete a green card and hand it to City staff prior to the meeting. When your name is called, please step to the microphone, state your name and address for the record, and limit the time used to present your remarks to three minutes so others have the opportunity to speak. The normal process on an agenda item is staff may first give a report on the item, Commissioners may ask questions for clarification, public input is received, a motion is placed on the floor, the Commission discusses the issue or responds to the audience concerns, and the vote is taken. In consideration of all, if you have a cell phone, please turn it off or put it on silent.

1. Call to Order: 4:00 p.m.
2. Approval of Minutes from January 18, 2024
3. Public Forum (For items not on the agenda)
4. Motion Approving the Agreement with Ames High School Volleyball
5. Staff Report regarding the Mini Pitch Project in Lloyd Kurtz Park
6. Project Updates
 - a. Fitch Family Indoor Aquatic Center
 - b. Steven L. Schainker Plaza
7. Monthly Report
8. Commission Member Comments
9. Next Meeting:
 - a. March 21, 2024, at 4:00 PM (Regular Meeting)
10. Adjournment

AMES PARKS AND RECREATION COMMISSION MEETING MINUTES

DATE: Thursday, January 18, 2024

COMMISSION

PRESENT: Jeremy Bristow, Sarah Cady, Rachel Cramer, Duane Reeves, Nathan Shimanek, Jeff White

ABSENT: Thyra Cox

STAFF PRESENT: Keith Abraham, Courtney Kort, Joshua Thompson,

CALL TO ORDER: 4:02 PM

APPROVAL OF MINUTES FROM NOVEMBER 16, 2023

Bristow moved, with a second by Reeves, to approve the November 16, 2023, and December 7, 2023, meeting minutes. No Discussion. No opposition. Motion Approved.

PUBLIC FORUM

None

REVIEW CAPITAL IMPROVEMENT PLAN (CIP) COMMENTS FROM CITY COUNCIL

Abraham presented the CIP Plan to the City Council on Tuesday evening. He recapped the discussion with the Council for the Commission.

Abraham informed the Commission that the Council discussed the Miracle Park resurfacing project. He told the Council it could be that only some of the surfaces must be replaced at once. Staff is being proactive in budgeting this for the future.

There were also questions regarding Moore Memorial Park improvements and signage. Abraham stated signs will be posted at the appropriate time. The proposed bridge will be rated to accommodate maintenance vehicles and will be in cooperation with Iowa State.

There were also questions regarding erosion on the north side of the Homewood Golf Course clubhouse. Abraham said the consultant hired was not concerned regarding erosion around the clubhouse.

The Council also had questions regarding the mini-pitch soccer facility proposed for Lloyd Kurtz Park. Abraham informed the Council that Staff will be working with Kick it Forward to help with fundraising for this project. The city is putting in \$150,000. Abraham stated the Council wanted to know if the \$150,000 would fund one mini-pitch court, allowing the city to do this project without waiting for additional funding. They

also asked if these courts could be placed in two different parks. Staff is also finalizing an agreement with Stonebrook church regarding parking.

Abraham also informed the Commission that the Council inquired into the status of the proposed agility course.

Cady asked if the Council had concerns regarding the catch-up year and no additional projects. Abraham said they did not, and staff is hoping that all projects will be caught up by June 30, 2025.

FY 2023/24-OPERATIONAL BUDGET

A) Budget Overview

Abraham showed slides on the general fund expenses, revenue, and tax subsidy. Recreation subsidy is 34%, parks is 95%, and the total subsidy is 60%.

Enterprise Funds

Ice Arena did have revenue over expenses, and the fund balance is healthy. Homewood operated in the black as well, with \$119,000 in net revenue. Fund balances are very healthy for that facility.

For other programs, Sixty Forward Center will be a partner; we will be holding some programs in that facility.

Abraham stated that approximately \$100,000 is needed for a consultant regarding the master plan for the new property in West Ames. Once the public input has been gathered, the master plan completed, and the Department has a cost estimate, the Council could decide how to pay for development.

Abraham also informed the Commission that there is about \$30,000 in the scholarship fund. If we tap into that fund, the money will be gone in two years.

At present, scholarships are granted through Mid Iowa Community Action (MICA). The Parks and Recreation Department has been absorbing the MICA Scholarship discounts into the operational fund.

The Department would like the Council to endow the scholarship fund with \$250,000. The Department has approached the Ames Foundation to help expand the endowment to \$1,000,000.

Cady asked about what fundraising the Department is looking into for 2024. Kort is working with Staff on the Duck Derby and a golf tournament to be held this year.

Abraham stated that the general fund support for instructional programs decreased this fiscal year. Athletic program participation is holding steady.

Aquatics programs are looking to increase the number of Water Safety Instructors. Forker Pool is closing at the end of the spring semester, so the aquatics staff is

looking for alternative locations for staff training and swim programs. Brookside Wading Pool will be demolished in 2024.

Wellness is restructuring fees for more consistency across the board. Some of the wellness programs will be moving to the Sixty Forward Center.

Cady asked if the programs held at the Sixty Forward would be City of Ames programs. Kort informed her that they would be City classes.

Abraham stated that staff is considering increasing the Ice Arena Coordinator position from $\frac{3}{4}$ time to full-time before the recruitment process begins. The Ice Arena has partnered with the library for children's story time and skating opportunities. ISU Men's and Women's Hockey are back.

Abraham also informed the Commission that Park Maintenance had hired two maintenance workers for a Wednesday through Sunday schedule, increasing the level of service to the residents and reducing the need for weekend overtime.

Abraham informed the Commission that the budget will be presented to the City Council on February 7 at 5:15 PM.

B) Fees and Charges

Abraham stated that the presented fees have been developed with the proposed budget in mind.

Bristow moved, with a second by Reeves, to recommend the Ames City Council approve the budget as presented for 24/25. No Discussion. No opposition. Motion Approved.

Bristow moved, with a second by Shimanek, to recommend Alternative #1, Approving the revised fee schedule for FY 2024/2025. No Discussion. No opposition. Motion Approved.

MOTION APPROVING THE AGREEMENT WITH MID-IOWA LACROSSE ORGANIZATION, INC.

Kort informed the Commission that this is the second year we have had this agreement with Mid-Iowa Lacrosse. She also stated that outside of changes to the schedule, the agreement has not changed, and Staff recommends Alternative #1.

Bristow moved, with a second by Cramer, to approve Alternative #1, approving the agreement with the Mid-Iowa Lacrosse Organization to offer two sessions of Flex6 Lacrosse. No Discussion. No opposition. Motion approved.

PROJECT UPDATES

Fitch Family Indoor Aquatic Center

Abraham stated that bids were due January 11. Story Construction helped to get people interested in the project. There were 14 bid packages; 79 bids were received. The

project has generated a large amount of interest, and people are looking for work. Once all the information is put together, a Council Action Form will be created. Due to the favorable cost projections, Staff's recommendation will be to move forward on the base bid and all the added alternates. Abraham stated that if all goes smoothly, the demo on the site will begin in mid-March.

Steven L. Schainker Plaza

Thompson informed the Commission that the concrete for the ice rink portion of the plaza has been poured. The contractor for the water features did as much as they could before it started snowing. Completion of the water features will begin in the spring. Temporary heating will be installed in the warming house so work in the mechanical room can be completed.

Sands-McDorman Property

There will be a request to the Council for funding to develop a park master plan for this property.

MONTHLY REPORT

Kort informed the Commission that Staff is preparing to start the bidding process for bringing alcohol service to the Ames City Auditorium.

Thompson informed the Commission that the Parks Maintenance Department is still accepting holiday trees for mulch. He also told the Commission that Staff has begun filling the ice rinks at River Valley.

Winter pruning will happen in some of the parks designated in the five-year plan.

COMMISSION MEMBER COMMENTS

Cady asked Kort about the Cross-County Ski Clinic. Kort informed the Commission that the first part of the clinic was held. The second part was postponed due to bad weather and dangerous wind chills.

The cross country ski trails have been groomed twice and will be groomed again Friday night or Saturday morning.

Abraham reminded everyone watching or listening that there are openings on the Parks and Recreation Commission. No campaigning is associated with the position; you complete an application and a small essay on why you would like to serve. Two terms will be open; Jeremy Bristow and Thyra Cox's terms will be up after the March meeting.

NEXT MEETING: Thursday, February 15 at 4:00 PM (Regular Meeting)

ADJOURNMENT: White moved to adjourn the meeting at 5:15 PM

COMMISSION ACTION FORM

SUBJECT: YOUTH VOLLEYBALL CAMP AGREEMENT WITH AMES HIGH SCHOOL VOLLEYBALL (AHSVB)

BACKGROUND:

Parks and Recreation has had a long-standing relationship with the Ames High School Volleyball program (AHSVB) to offer quality indoor and sand volleyball camps. Camps are six-weeks in length and available for youth in grades 3-6. The indoor volleyball camp is held March and April, and the sand volleyball camp is held June and July, annually. In 2023, indoor and sand volleyball camps had a total of 49 participants.

The presented agreement has no significant changes from prior years and AHSVB has agreed to the terms.

Highlights of the agreement, Attachment A, are shown below.

- AHSVB provides the instruction for the camps.
- City conducts registration and collects all fees.
- City retains 30% of all program fees paid, with 70% paid to AHSVB.
- Camps are held at City facilities, parks, and/or Ames Community School District gymnasiums as available.

ALTERNATIVES:

1. Approve the Youth Volleyball Camps Agreement with Ames High School Volleyball program for calendar year 2024.
2. Do not approve the Youth Volleyball Camps Agreement with Ames High School Volleyball program.
3. Refer back to staff.

STAFF'S RECOMMENDED ACTION:

The partnership between AHSVB and Park and Recreation provides the opportunity to offer quality volleyball camps, empowers high school coaches to impact the development of youth, and introduces the community to the local high school program. Combining resources provides a higher level of service and reaches more customers than one agency could provide on their own.

Therefore, staff recommends Alternative #1, as described above.

ATTACHMENT A
Ames Parks & Recreation Department
Youth Volleyball Camps Agreement
2024

- Purpose:** The City of Ames (“City”) will provide a quality lacrosse program by contracting with Ames High School Volleyball (“AHSVB”) to provide instruction.
- Leadership:** AHSVB will provide a minimum of one professional staff member to lead, supervise, and deliver volleyball instruction. The City’s Recreation Manager will also visit the program site periodically to offer feedback to the AHSVB.
- Registration:** City will accept all program registrations and fees.
- Registration Fees:** City will retain 30% of all program fees paid, with the balance of 70% being paid to AHSVB. Payments will be made to AHSVB after completion of each session.
- Refunds:** If refunds are awarded, partially or in full, City or AHSVB will not retain or receive a balance percentage of the refunded amount. Refunds will be approved by City and follow City refund practices.
- Fee Determination:** The City and AHSVB will discuss program fees annually. Fees must be approved by the Parks & Recreation Commission prior to implementation.
- Lesson Plan:** AHSVB will be responsible for creating and implementing all lesson plans for spring and summer sessions. Sessions will consist of 1 class per week, for six weeks. Each class will last between 55-90 minutes.
- Partnership Roles** City will be responsible for handling all registration, reserving indoor and outdoor facilities, and will provide storage, if necessary. AHSVB will be responsible for providing instructor(s), necessary equipment, and developing class curriculum. Both organizations will coordinate to market each program prior to registration and develop marketing material.

- Equipment:** City will supply all necessary equipment to play volleyball. AHSVB may bring any other equipment to supplement the curriculum.
- Location:** Sand volleyball programs will be held at local parks, coordinated by the Recreation Manager. Indoor programs will be held at Ames Community Center gymnasium or available ACSD gymnasiums, with potential options of other indoor facilities that is agreed upon by City and AHSVB.
- Inclement Weather:** If a class needs to be cancelled due to inclement weather, a decision will be made between the City and AHSVB at least 60 minutes prior to classes beginning. The City's hotline and Facebook page will be updated immediately upon a decision being made. In the event the weather becomes inclement during outdoor class, class will be stopped immediately. If any classes are cancelled due to inclement weather, City and AHSVB will discuss date and time options to reschedule. City and AHSVB will coordinate make up class dates within the session schedule in advance, pending availability.
- Contracted Employees** AHSVB will provide and be responsible for all staff members and volunteers. Lead coach or coaches must have completed background check through Ames Community School District or State of Iowa. Lead coaches must be onsite for the duration of each class.
- Storage:** Storage may be accessible at city parks and facilities, upon request by the Recreation Manager.
- Insurance:** The City and AHSVB will both carry liability insurance. AHSVB covenants and agrees to hold the City of Ames, its officers, and employees harmless and to indemnify them against each and every claim and demand of whatever nature made by or on behalf of any person or persons resulting from or arising out of any activities or omission arising out of the use of the ACSD, City facilities, other agreed upon facilities, and parks on the part of the AHSVB, its agents, servants, invitees, and employees, and for such purpose AHSVB agrees to carry liability insurance naming the City of Ames, its officers and employees as Additional Named Insured, such insurance to have limits of not less than \$500,000 combined single limit per occurrence.

AHSVB further agrees to file a Certificate of Insurance with the City Manager's Office, City of Ames, evidencing that such insurance has been furnished, and that the same will not be cancelled without ten (10) days' notice to the City of Ames. This Certificate of Insurance must be filed prior to the execution of this agreement.

AHSVB staff is responsible for personal medical expenses.

Program Evaluations: City and AHSVB will conduct a joint program evaluation following each program.

Agreement Terms: This Agreement shall become effective on the date this Agreement is signed by both parties and can be terminated by either party upon (60) day prior written notice. Terms of the agreement will expire December 31, 2024.

Contacts:	City of Ames Ben Flaherty Recreation Manager 515 Gateway Hills Park Dr. Ames, IA 50014 ben.flaherty@cityofames.org 515-239-5367	Ames High School Volleyball Name: _____ Title: _____ Address: _____ _____ Email: _____ Phone: _____
------------------	--	---

DATED AND EXECUTED AT AMES, IOWA, THIS _____ day of _____,
_____.

The City of Ames, Iowa
Parks and Recreation Commission

By: _____
Chairperson of the Parks and Recreation Commission

Grantee: Ames High School Volleyball

By: _____
Ames High School Volleyball

Its: _____

STAFF REPORT

MINI PITCH AT LLOYD KURTZ PARK

February 15, 2024

BACKGROUND:

Mini pitch is a smaller court in which futsal, a version of soccer, can be played. Futsal is a fast-paced game, uses a smaller, heavier soccer ball, relies on shorter, faster passing, and is played with 3-5 players per team.

This project includes installing one or two mini pitch courts in Lloyd Kurtz Park, which is located at Bloomington Road and Hyde Avenue. Lloyd Kurtz Park consists of four acres and includes a non-reservable shelter, playground equipment, swings, basketball court with two adjustable hoops, sand volleyball court, and drinking fountain. These amenities are on the north end of the park with approximately three acres of green space to the south. There is a path across the north end of the park from Hyde to Windfield and there is a shared use path adjacent Bloomington Road at the south end of the park.

Lloyd Kurtz Park was chosen for mini pitch for the following reasons:

- **Accessibility** – The park is on an arterial street, has CyRide bus stops at the intersections immediately to the east and west, is connected to a shared use path, and has multiple sidewalk connections from within the neighborhood.
- **Green space** – There is approximately three acres of green space available for the mini pitches. For reference, one court requires approximately 1/8 of an acre while two courts require approximately 1/4 of an acre.
- **Amenities Throughout Community** – Staff is committed to spreading park amenities to various sections of the city.
- **Visibility** – Since the park is on an arterial street, the mini pitches would be very visible which helps reduce vandalism, graffiti, and crime. It also helps Police monitor park activities as they can be conducted via drive-bys.
- **Off-street parking arrangement** – Since 1998, the City has had an agreement with Stonebrook Church which allows park users to park in the Church parking lot. With the addition of the mini pitch court(s) to the park, staff has met with Church leaders to develop a new agreement to allow park goers to use the parking lot as well as including other items (i.e. Church use of mini pitches, sidewalk connection from parking lot to the mini pitch, maintenance responsibilities, etc.).
- **Out of the Flood Plain** – Any time an amenity like this is being added to the park system, staffs' intention is to keep it out of the flood plain as flood events can damage the facility and require additional maintenance.

PUBLIC INPUT:

A public input meeting was held on Monday, February 5, 2024, at Stonebrook Church with approximately 40 individuals attending. Prior to the meeting, staff mailed postcards

to 384 homes near Lloyd Kurtz Park, distributed a press release, did radio spots, provided information to the Ames Soccer Club for distribution, promoted on social media, and included information in the Parks and Recreation weekly e-newsletter that is distributed to over 12,000 individuals.

Comments and questions from this meeting, along with several emails staff received, are included in Attachment B. The comments and questions can be split into three categories, 1) Traffic, parking, and safety; 2) Mini pitch related items; and 3) Other park related items.

To summarize Category 1, the neighborhood has genuine concerns about the current level of traffic and safety on Hyde, and to a lesser degree, on Eisenhower. Safety of park users, especially children, focused on how difficult it can be trying to cross Hyde to get to the park. Additionally, parking on Hyde is on the west side so individuals driving to the park have to cross Hyde when they get out of their vehicles. Suggestions included adding a traffic signal at Hyde and Bloomington, do not allow parking on Hyde from Wellbeck to Bloomington, educate users to park in the Church parking lot, add a traffic signal at Eisenhower and Bloomington, reduce speed limit on Hyde, and more.

Category 2 comments were mostly in favor of adding mini pitch to the park and would like to see two courts instead of one. If funding is a concern, one court is acceptable. If two courts are installed, there was support for dedicating one to soccer and having the second court being multi-use (soccer, basketball, pickleball). Basketball wasn't favored as much since a basketball court already exists in the park. Conducting leagues and/or tournaments isn't much of a concern if there are days and times left open for neighborhood drop-in play. Lights generated some discussion, specifically that drop-in users should be able to turn on the lights if needed and maybe have different hours for light usage during the school year versus the summer. Increased noise is a concern for some, especially if pickleball is allowed.

Park related items discussed in Category 3 included playground equipment concerns, a path connecting the Church parking lot to the shelter, a sidewalk in the park along Hyde, and portable restroom concerns. Staff mentioned new playground equipment has been ordered and is planned to be installed this spring. Other items could be addressed through operations while others would need to be prioritized with other CIP projects.

COST AND FUNDING:

The cost estimates for one or two courts are as follows:

<u>Item</u>	<u>One Court</u>	<u>Two Courts</u>
Concrete	\$ 58,000	\$116,000
Design and Survey	\$ 10,000	\$ 10,000
Path	\$ 10,000	\$ 10,000
Electrical Connection	\$ 10,000	\$ 10,000
Mini Pitch Components	<u>\$104,000</u>	<u>\$190,000</u>

Total

\$192,000

\$336,000

The City has currently allocated \$150,000 toward this project. Staff has been in conversation with a non-profit organization called Kick It Forward (KIF) who fundraises for mini pitch courts across Iowa. It is unknown at this time how much KIF is willing to fundraise, but it is a potential avenue to fill the funding gap for one, if not two, courts.

NEXT STEPS:

Staff will be doing the following:

1. Finalize an agreement with Stonebrook Church for parking lot use and mini pitch use.
2. Finalize conversations with Kick It Forward to be able present a draft agreement to Council if it chooses to have KIF fundraise for this project.
3. All this information, along with Commission comments will be presented to City Council on February 27. The Council will then provide direction to staff as to how is to proceed with this project.

COMMISSION DIRECTION:

Staff is asking the Commission to provide direction to the City Council on the following items:

1. Should the City move forward with this project?
2. Should the City pursue one or two courts?
3. Should the City enter into an agreement with Stonebrook Church?
4. Should the City enter into an agreement with Kick It Forward for fundraising for this project?
5. Is there anything else the Commission would like to provide direction on?

ATTACHMENT A

MINI PITCH PROJECT AT LLOYD KURTZ PARK

PUBLIC INPUT

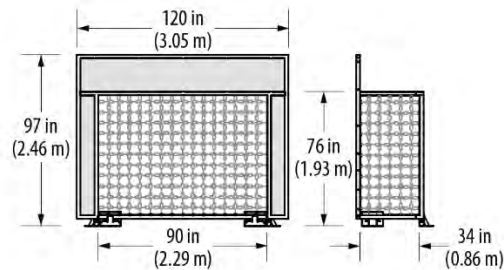
A public input session was held Monday, February 5, 2024 at Stonebrook Church with approximately 40 people in attendance.

Staff started the meeting by sharing a new playground and swings with a concrete walkway surrounding the equipment will be installed this spring. Connections from the existing paths to the new walkway will be installed to make the playground area accessible. Vegetation throughout the park will also be cleaned up. Staff then gave an overview of the proposed project and then asked for feedback. Comments and questions (with responses) from the meeting, as well as, emails received are shown below. Questions posed are listed below with responses from staff.

Public Input Comments and Questions (Staff Responses in Red):

- If there is a portable restroom, bolt it down so it cannot be tipped over. *(Staff indicated this can be done or an enclosure like is in Roosevelt Park could be installed)*
- There needs to be a path from the Church parking lot to the shelter so people with strollers, etc. can get there without having to go across the grass. *(Staff indicated there is no funding for this right now, however, this could be discussed as a future project. Staff asked that if this were to be added, would the neighborhood like a sidewalk along Hyde as well which would create a loop around the park which is similar to what was done at Inis Grove Park. Attendees were very much in favor of this idea.)*
- Need to educate people to park in the Church parking lot rather than on the street.
- Need signage to direct people to park in the Church parking lot.
- Parking on Hyde (Wellbeck to Bloomington) is dangerous because Hyde is a busy street and parking is on the west side of the street.
- Do not allow parking on Hyde from Wellbeck to Bloomington.
- There needs to be a traffic light at the Hyde and Bloomington intersection. *(Staff indicated the City's Traffic Engineer said a traffic study had been conducted at one time and the results warranted a signal at this intersection. No time frame has been determined as to when this will be installed.)*
- Parking in the cul-de-sacs create issues for residents to get out of their driveways.
- There is a camp who picks up and drops off campers at Lloyd Kurtz Park. This causes congestion as parents park on Hyde and in the cul-de-sacs because it is close to the shelter. *(Staff will contact the camp to have them pick up and drop off campers in the Church parking lot)*
- Install a pedestrian crossing at Grant Circle.

- Is anything going to be done to the Church playground? *(Stonebrook Community Church indicated there are no current plans for the Church playground and if there were any public comments or feedback, direct them to the Church to address)*
- Will there be a shelter added near the mini pitch courts? *(There is no shelter included in the project)*
- What is the size of the goals and what material are the nets made of? *(Goals measure approximately 7.5 feet wide x 6 feet tall x 3 feet deep. Nets material is galvanized chain link. The specifications for the goals are shown below.)*



- Will there be a sign with instructions on how to play and the rules listed? *(Staff indicated this is something that could be included)*
- It is important to not over program the courts so neighborhood kids can use the courts.
- How often will the mulch around the playground equipment be changed and/or replenished? *(The existing mulch will be removed prior to the new equipment being installed with new mulch being added after installation. Under swings is a trouble spot and swing mats will be installed under the swings at Lloyd Kurtz Park. Mulch is added as needed after the initial installation.)*
- How can the community help make this a reality? *(Individuals, businesses, Friend Groups, and Neighborhood Associations have made donations to various projects throughout the years to bring them to fruition.)*
- Has there been a noise study done to determine how much noise the new activities will create? *(Staff mentioned a noise study is not planned for this project)*
- Need to have Police drive by to check on the park. *(Staff will discuss this with the Police Department staff)*
- Need to add no smoking signs in the park. *(Staff said all parks are tobacco and vape free and that signs can be added)*
- Add more trees. *(Staff will discuss this topic with the City Forester)*
- Will there be benches added to the playground area when the equipment is replaced? *(Staff said yes)*
- The Eisenhower and Bloomington intersection can also be busy, can a traffic light be installed at this intersection as well?
- Signage should be added to the Wellbeck to Bloomington section of Hyde and should include speed limit signs and “children at play” signs.
- Two courts would be great, but because of cost, maybe one should be put in first.
- Put pitches in other areas of the community and not just in Lloyd Kurtz Park.
- Not excited about having pickleball in the park.
- When will the lights be on? *(Staff said the lights would be programmed to be on when activities (i.e. leagues, rentals, etc.) would be held but would be on no later than 10:30 pm.)*

- Is there a way for lighting to be turned on for drop-in use? *(Staff indicated a push button is used on tennis courts so drop-in users can use the courts after sunset. This same system could be used on these courts.)*
- Go big (two courts). One could be for soccer and the other could be for mixed use.
- Some attendees like the mixed use idea.
- If basketball hoops are included on the mini pitch courts, can they be adjustable? *(Staff indicated that because of the design of the mini pitch goals, the hoop height would not be able to be adjusted)*
- Can the goals on the current basketball pad be replaced with adjustable hoops? *(The current hoops are adjustable with the baskets set at 10 feet. If the neighborhood would like the height of the baskets to be different, we can do that. The crank handles are not left in the parks as this has created multiple problems (i.e. crank handles stolen, gears stripped, etc.) in the past.)*
- The courts should just be for soccer as soccer facilities are underrepresented in the park system. Most parks have basketball, several have pickleball, and few have soccer.
- What are the maintenance items and costs associated with the mini pitch courts? *(Operational costs such as trash pickup will be minimal as staff already picks up trash at Lloyd Kurtz Park. There is very little maintenance to be done to these courts. Every 8-10 years, the courts will need to be resurfaced which is estimated at approximately \$15,000 in 2024 dollars.)*
- You mentioned lights would be able to be on during park hours which end at 10:30 pm. Is it possible to have lights turn off earlier during the school year than in the summertime? *(This is possible; however, staff would need to have more discussion on this topic and maybe gather additional feedback.)*
- Consider placing the courts end to end rather than side by side. This would provide more sideline area for people to watch from.
- Please include the image of the playground when notes are sent out. (The playground for Lloyd Kurtz Park is shown below.)



- How long will it take to install the playground? *(It is staff's goal to install the playground in 2-3 weeks.)*

Email Correspondence:

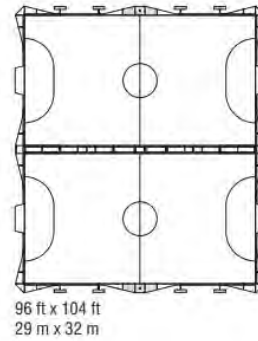
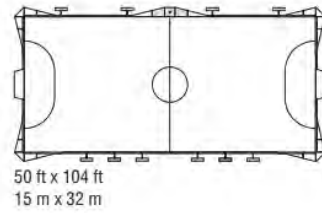
Good morning –

Thanks for your recent flyer regarding the proposed mini-pitch project at Lloyd Kurtz Park. We are not able to attend the currently scheduled public meeting on 2/5/2024, but would like to share some input and ask a few questions.

As neighborhood residents of Bloomington Heights, we are interested in the proposed project. Any project that encourages kids and adults to get outside and move is a good thing. However, as close residents to the park, we do have a few questions and concerns.

1. The most prevalent of our concerns is parking. With the paving of Grant Avenue as it extends north from Hyde Avenue into Gilbert, the traffic on Hyde has increased significantly. Parking on Hyde is on the west side of the street only, and this requires parents and kids to have to run across Hyde to get to the park. We have seen more than a few close calls. When the park gets busy, we also see cars parked illegally on the east side of Hyde (closest to the park) while picking kids up, especially when there are scheduled events in the park. This serves to further increase the congestion of Hyde traffic and results in more than a few unsafe conditions. With the addition of the proposed mini-pitch project, how will an increased need for parking be addressed? I think the most acceptable solution (as confirmed with the current signage on Windfield Drive) would be for the park participants driving to Lloyd Kurtz, to park in the Stonebrook Community Church lot. Will additional signage be implemented to promote more parking at the church when visiting the park? *(The City is updating an agreement with Stonebrook Church to continue to allow park users to park in the Church parking lot. Signage and additional educational methods will be developed to educate users of where to park. Staff will discuss with the City's Traffic Engineer about parking on Hyde between Wellbeck and Bloomington.)*
2. There is currently a large amount of green space at Lloyd Kurtz park. We are assuming that the new mini-pitch project will take up some of that space. Can you explain exactly where the mini-patch will exist within the park and how large it will be? Hopefully close to the church lot, to help encourage parking there? *(The size of the courts and where they will be located are shown in the two diagrams below. On the green space diagram, the courts are shown as the white rectangles.)*

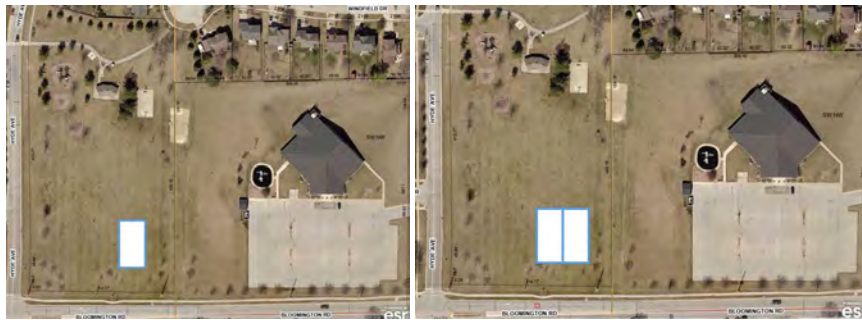
Potential Court Sizes



Green Space

One Court: 5,724 sq ft

Two Courts: 10,692 sq ft



3. Will the new mini-pitch be enclosed in some sort of fencing, and if so, will it be locked during certain hours, or open 24/7? *(The courts will be fenced and will be but unlocked. The courts will be subject to park hours, 6:00 a.m.-10:30 p.m. The picture below shows what they would look like.)*



4. Will the new mini-pitch require any additional lighting? If so, how will the lighting be scheduled? Or would a timer be utilized? Currently, the shelter at Lloyd Kurtz has lighting and electrical outlets based on a switch. We're wondering if a timer would be a better solution, as many times, the lights are left on throughout the night. If there are to be lights at the new mini-pitch, we would be in favor of some sort of timer here as well. This would save money on electricity and avoid some light pollution. *(The lights would have photocell so they could be turned on when it is dark. They will also have a timer so they cannot be turned on outside of park hours, 6 am – 10:30 pm. The City does have a night sky ordinance so the lights will need to be compliant with the ordinance. The picture below shows that the light is directed to the courts.)*



5. Finally, we have a question about noise. Depending on where the new mini-pitch is to be located within the park, noise can be a concern. This is especially true if it is multi-use and pickleball is involved. We've been around several pickleball courts and they can be very loud and the sound constant throughout the day. This can be a detriment to those working from home. If pickleball is authorized and

encouraged, how will you promote any sound reduction/dampening policies, and how will you enforce them? *(There was a mixed response from attendees regarding pickleball with some wanting it and others not. Staff would need to do research as to what is available to control noise from pickleball. As a sidenote, there are pickleball courts at Inis Grove, Brookside, and Emma McCarthy Lee Parks and there are no noise reduction strategies in place.)*

Thanks for taking the time to request input and questions. We are disappointed that we can't make the public input meeting, but we hope to hear back from you soon.

Hello Courtney and Keith,

I live at 3908 Welbeck Drive in Ames, so just a couple of blocks from Lloyd Kurtz Park. I was able to attend the public input meeting last night but had to leave prior to the conclusion and did not have a chance to provide some input, so I wanted to send an email. I think the meeting went well and I was very glad to hear that the playground equipment at the park will be replaced this spring. The playground has become a hazard over the past few years.

Prior to receiving the notices about the mini-pitch I knew nothing about this type of court so I appreciate learning more about it. The following are some comments that I didn't get a chance to make last night (some from prior to the meeting and some that I developed during the meeting).

1. One of my biggest concerns is traffic in the area.

a. People often park along Hyde to go to the playground. If they park on the correct side of the road, kids are often darting out of cars or from between cars to get to the playground. If people park on the no-parking side of the road, the roadway is narrowed even more than it already is and with the amount of traffic on Hyde it makes navigating this area challenging. *(Please see some of the responses in the comments and questions section at the beginning of this document.)*

b. The crosswalk that has been added across Hyde at the end of Welbeck is appreciated but the number of vehicles, the speed that they travel along Hyde, and the slight bend in Hyde to the north of the crosswalk makes this a dangerous place for kids to cross. I have seen kids stand at the crosswalk for minutes trying to cross and have ended up going over to help them. Cars often do not slow down for adults and kids and it seems like they are often traveling over the posted speed limit. It might also be nice to have a 4-way stop or some way of slowing vehicles down at Hyde and Harrison. Many vehicles are just passing through the neighborhood to get from Gilbert to Ames. This is now locally called the Hyde Highway. *(Staff will discuss this with the City's Traffic Engineer.)*

c. There have been multiple accidents at the intersection of Hyde and Bloomington. The crest of the railroad makes it difficult to see vehicles (especially small vehicles) coming from the west. My understanding from the meeting last night is that a

traffic study has been done and a traffic light is warranted. Funding for the traffic light will come from the developers to the north when they plat the development, date to be determined. If a light is already needed, then there should be funding, it shouldn't be up in the air for some later date. Adding a new attraction (the mini-pitch courts) will only increase traffic (vehicles, pedestrians, and bikes). Has there been any talk about putting in a traffic circle rather than a light at this intersection? While vehicles may be encouraged to park in the church parking lot, pedestrians and bikes will come from all directions and will have to access the park from multiple directions, crossing Bloomington at this time is already challenging and dangerous. *(Staff will discuss this with the City's Traffic Engineer.)*

- d. There is a camp that utilizes the park during the summer for pick up and drop off. During these times cars park on the right side and wrong side of the road, cars pull u-turns along Hyde along the park and at the Hyde/Welbeck intersection, children and parents are all over the place. This area is just a mess. *(Staff will contact the camp to have them pick up and drop off campers in the Church parking lot)*

2. I did not realize until this discussion that people could even park in the church parking lot. There needs to be more awareness of this with signs, communication with users, etc. It would be nice really if there was no parking on Hyde between Bloomington and Welbeck or even further north to encourage users with vehicles to park in the church parking lot. *(Staff will discuss this with the City's Traffic Engineer.)*

3. During the meeting it was brought up that a path all the way around the park might be nice. This idea, I agree with. It would also allow for people who do park in the church parking lot to have paved access to the playground. Currently if they park in the church parking lot they either have to walk across the field or they have to walk along Bloomington, cross Hyde, walk north on Hyde, and then cross Hyde again. More direct, paved routes would be nice.

4. I mentioned to a co-worker the mini-pitches and he said that they are loud. This is something that was brought up last night as a concern. I live several blocks away and I think that there is enough ambient noise most of the time that I won't hear the pitches, but I do imagine this could be a concern for those that live around the park, both north and south of Bloomington and west of Hyde.

5. I was wondering if a roller hockey rink was considered instead of a mini-pitch. I imagine this might be less expensive (more in line with the current funds available). This could be used in the spring, summer, and fall, and then flooded in the winter for an outdoor ice hockey rink. My family doesn't play soccer but would be very interested in a hockey rink and find it much more useful. *(This has not been discussed. ISU had a roller hockey rink years ago and Parks and Recreation did offer some programming which was not very successful. ISU eventually demolished it.)*

6. Adding a shelter to the court/rink area would be nice to provide an area for people attending functions on that end of the park somewhere to sit.

7. The tipping of the port-a-potties is an issue. I find them gross anyway and my daughter refuses to use one so we always have to go home if she needs facilities at the park. And I know there were different alternatives discussed last night, some more permanent than others. On construction sites they sometimes tie them down with a cable or two over the top that is then secured to the ground. This is so they don't tip over from wind or bored kids. *(Staff addresses this concern in the first bullet under the Public Input Comments and Questions section)*

Thank you for allowing the community a chance to provide input on the changes to this park. I think many of us are looking for how to better the community and have been frustrated with the deterioration of the playground and the increased traffic on Hyde and the impacts of this on the neighborhood and quality of life.

Thanks for the presentation last night and the addressing of neighborhood questions and suggestions. The mini-pitch is a great addition to the park.

We are very concerned about the traffic at the intersection of Bloomington Road and Eisenhower. It is currently challenging to make left turns onto Bloomington Road from Eisenhower due to traffic. It is even more challenging to try and cross Bloomington Road with a stroller and young children. When the mini-pitch has been installed, older kids will be trying to cross on their own. With added traffic due to parking at the church these challenges will increase. This is a huge safety issue for both cars and people at this intersection.

Could a 4-way stop, traffic lights, or at least a crosswalk option be put at this intersection? With the increased emphasis on parking at Stonebridge Church on Eisenhower Avenue for the park, it seems that this will be at least as important as the proposed traffic light at Bloomington and Hyde, which is only a 3-way intersection. *(Staff will discuss this with the City's Traffic Engineer.)*

Thanks for listening to all suggestions to make this a fun and safe environment.

Dear Courtney and Keith,

I received a postcard informing me of a meeting scheduled on Feb. 5 to gather public input regarding a proposed mini-pitch court at the Lloyd Kurtz Park. I would like to provide my input via this email because I can't join the meeting in person.

I have been living next to the Park since 1999 and I like it a lot. It is a versatile open public space within walking distance to my house that provides a flat and grassy area useful for various activities. Throughout the years I have seen people playing soccer games, frisbees, kites, small drones, cross country training, dodgeballs and many other sports, not to mention daily routines like jogging and walking dogs, in the park. In addition, during summer people do stargazing, picnicking and other summer activities and during winter people do skiing/skating practices and other winter sports, in the park. In my opinion, a flat open space without any barrier, like the Lloyd Kurtz Park is now, provides

the greatest flexibility for many different uses. Such flexibility also benefits most people, from toddlers who play hide and seek in the park to old folks like me who just enjoy a walk in the breeze and watch other people play in the park.

The postcard you sent did not specify the proposed size and location of the mini-pitch court, but I believe it is going to take away most, if not all, of the open green space at Lloyd Kurtz Park. It will also establish permanent barriers and restrict activities only to a limited set of supported sports. Therefore, for people who don't play soccer or pickleball games, this mini-pitch court will not be useful at all. Personally, I am too old to play soccer without risking breaking my bones. :) Note that there is already a basketball court at the Park so we don't need another one. *(The park is four acres and one mini pitch court will use 3.3% of the space and two courts will only use 6% of the space. There will be plenty of green space left for other activities. Please see the Green Space picture earlier in this document.)*

In my opinion, if the City has the money, it should be spent first in fixing existing problems in the Park before building new facilities. For example, the small shelter had a concave, water impenetrable floor that was constantly water logged, forcing all picnic tables to be moved around. The trail was routinely driven on by service vehicles, and because of its narrow width and curvature, some grass were permanently killed and muddy spots were created along the trail. The recent construction of some concrete plates for BBQ stands and portable restrooms was a good idea, but that work killed even more grass and created an even larger muddy area near the shelter. Fixing these existing problems in the Park will be far more helpful and appreciated than building anything new. And if you do have money left to build new facilities, a tennis court or badminton court that will not take away as much green space and can be used by more people of varying age groups will probably be more useful than the mini-pitch court. *(Staff will be addressing these items as possible.)*

I can imagine it must have taken a great deal of your effort to plan for the mini-pitch court and budget for it. You must also be very enthusiastic and proud to present your mini-pitch court plan to the neighborhood around the Park. I hope my negative opinions will not disappoint you too much, or discourage you from planning other great things for the City of Ames in the future.

Hello Courtney and Keith-

I am not able to attend the Monday, February 5 meeting on this project. However, I wanted to offer some thoughts.

I have lived in the Bloomington Heights neighborhood for nearly 16 years. We love this neighborhood! It is lively, full of children, wonderful, thoughtful neighbors, and, excellent citizens.

I have noticed over the years that the crossing of Bloomington & Hyde has become exceedingly busy. The additional housing, the extra churches that have been added, and

the businesses that include Casey's, Fareway, etc., have increased traffic in this area. There are times you must wait at least five minutes to turn from Hyde onto Bloomington due to high traffic and long lineups. This is often dangerous because of the rate of speed of people coming over the railroad tracks traveling east on Bloomington- Not only are they traveling fast but you often can't see them until they are close to Hyde Road.

Can we please consider the urgency of a stoplight at this corner of Bloomington and Hyde? If this mini pitch project is added to the area, the traffic will become even more concerning. The project sounds fantastic as long as additional parking and a stoplight are added. *(Please see comments earlier in this document related to the Hyde and Bloomington intersection and parking.)*

Please consider this very important safety addition as there is a growing number of children, drivers, and law abiding citizens.

Courtney,

Where in Kurtz park would this be located? Are restrooms also planned as part of this project? *(Please see the Green Space picture earlier in this document for the location of the courts. No permanent restrooms are planned for this park.)*

Thank you for hosting the meeting last night!

I had to get to a coaching session last night so had to leave early and was unable to give feedback publicly. I really like the idea of two courts as I believe it gives greater flexibility in being able to run events whether that be leagues, tournaments, etc. I also like the idea of one of the meeting participants who suggested having one court be soccer specific and the other being multi-use. It also seemed that based on pricing you get more bang for your buck in installing two vs. one court. I am not too sure on the Kick It Forward fundraising piece of the puzzle but if it's a possibility to raise the money for two that would be great.

Overall, it seemed like there were more issues raised that were not specifically related to the installment of the courts but instead related to other existing problems and challenges. I hope that the installation of the courts moves forward and it will not only help promote the game of soccer but will add to the diversity of Ames Parks.

Thanks again and good luck with the project.



Caring People ♦ Quality Programs ♦ Exceptional Service

TO: Keith Abraham, Director of Parks and Recreation
FROM: Staff
RE: Monthly Report February 2024

PARKS AND FACILITIES:

1. Staff completed tree pruning in Daley, Country Gables, Brookside, and Stuart Smith Parks this season. Left to prune for this season are Moore Memorial and Parkview Parks. The tree pruning plan for the parks is to prune every tree once every five years. This is the fifth year of the tree pruning plan.
2. Staff groomed the trails in East River Valley in late January for the Cross-Country Ski Clinic. Staff received very positive comments about the condition of the groomed trails this winter season.
3. Staff received feedback from patrons that the radiant heaters above the spectator seating at the Ames/ISU Ice Arena were not working in late January. An HVAC contractor inspected the equipment and determined they are beyond repair and need to be replaced. Staff is in the process of working on solutions to the issue and hope to have them replaced before this fall.
4. The Iowa Department of Natural Resources stocked the north lake at Ada Hayden Heritage Park in late January with 1,900 rainbow trout. The stocking was not publicized as the ice was unstable for ice fishing.

RECREATION PROGRAMS:

1. In January, there were 22 public skating sessions held at the Ames/ISU Ice Arena with a total attendance of 1,535 skaters. A total of 89 skaters attended 19 figure freestyle sessions.
2. The Ames/ISU Ice Arena held a New Years Eve public skate from 9:00 PM-12:00 AM to skate in the new year. A total of 106 people participated.
3. A new session of virtual and in-person fitness classes began in January with 470 in-person and 32 virtual registrations.
4. A new session of Tae Kwon Do began with 123 registrations.

5. A new session of morning and evening aqua classes began at Forker Pool on the ISU Campus with a total of 82 registrations.
6. A new session of West Coast Swing began on January 22 with 11 registrations.
7. Winter swim lessons began at ISU Forker Pool with a total of 123 registrations.
8. A Water Safety Instructor (WSI) course was held in January at ISU State Pool and six staff members were certified to teach Red Cross Swimming Lessons.
9. Aquatic staff held a hiring event for Furman Aquatic Center candidates on Sunday, January 21 at ISU Forker Pool. The hiring event allows interested candidates to apply, interview, take the lifeguard pre-skill test, and get registered for certifications all in one stop. Future hiring events will be held March 10 and April 6.
10. In January, session two of Euchre and Cribbage began. Euchre has 24 participants, Morning Cribbage has 9 participants, and Evening Cribbage has 14 participants.
11. Homewood Clubhouse had three rentals in January. The three rentals were all birthday celebrations.
12. In January, the Ames City Auditorium hosted the following events:
 - a) Martin Luther King Day event on January 15.
 - b) Fifth and Clark Concert Series on January 19 and 26, featuring Royce John and Fred Love & The Bakersfield Brawl, respectively.
 - c) Dancenter Dancer on January 20.
 - d) Performance Dance on January 28.
 - e) Lutheran Church of Hope also hosted 4 services in the month of January on Sundays.

PROJECT UPDATE:

1. Site Services, Algona, Iowa, completed asbestos abatement this week on the north building at the Fitch Family Indoor Aquatic Center Site. The membrane adhesive used to affix the rubber roof, as well as some of the tar used on the roof, contained asbestos.
2. Amusement Restoration Companies, Burnet, Texas, is planning on starting the Furman Aquatic Center Pool Basin Repainting Project in late February. Work includes brush blasting the existing surface, crack repair, repainting all the basins, and repainting all the lines and targets in the lap pool. Work is to be completed by the end of April.
3. Staff is in the final stages of completing the renovation of the wooden steps on the northeast side of Inis Grove Park. Staff has replaced all the subframe, stair treads, and is in the process of replacing the hand railing. Project will be done by the end of February.

4. Johnson Controls, Urbandale, Iowa, was scheduled to start the overhaul of the compressor and controller by early December but is now planning to start by the end of February. The delay was caused by part shortages and also the new controllers had to be manufactured. The overhaul and the controller replacement will assist with ensuring the ice making system is operational for another 20 years.