

LEGEND:

- AIRPORT PROPERTY LINE
- 8' TALL CHAIN LINK FENCE WITHOUT OUTRIGGERS OR SKIRT
- 8' TALL WOVEN WIRE FENCE WITH OUTRIGGERS AND SKIRT
- 8' TALL CHAIN LINK FENCE WITH OUTRIGGERS AND SKIRT
- 8' TALL CHAIN LINK FENCE WITH OUTRIGGERS BUT WITHOUT SKIRT
- 6' TALL CHAIN LINK FENCE BASE MOUNTED WITHOUT OUTRIGGERS OR SKIRT
- 4' TALL FIELD FENCE
- EXISTING FENCE TO REMAIN
- PROPOSED PCC
- GRANULAR SURFACE

NOTES:

1. CONTRACTOR SHALL DETERMINE MEANS NECESSARY TO VALIDATE UTILITY LOCATIONS (PUBLIC AND PRIVATE), INCLUDING BUT NOT LIMITED TO, POTHOLING, WIRE TRACING, ETC.
2. CONTRACTOR SHALL FIT THE FENCE ALIGNMENT AND POST LOCATIONS TO AVOID UTILITIES WHERE POSSIBLE. ALIGNMENT ADJUSTMENTS SHALL BE LIMITED, ALIGNMENT SHALL FOLLOW THE GENERAL ROUTE SHOWN IN THE PLANS.

FENCE BASE PLATE MOUNTED TO LINTEL BEAM

REMOVE EXISTING 4' TALL CHAIN LINK FENCE AND REPLACE WITH 6' TALL BASE PLATE MOUNTED CHAIN LINK FENCE. SEE U SHEETS FOR MORE INFORMATION.

25' DOUBLE SIDED ELECTRICALLY POWERED CANTILEVER GATE ADD SIGN: GATE 1

15' ELECTRICALLY POWERED CANTILEVER GATE ADD SIGN: GATE 5

6' SINGLE SWING GATE FOR PEDESTRIAN ACCESS ADD SIGN: GATE I

6' SINGLE SWING GATE FOR PEDESTRIAN ACCESS ADD SIGN: GATE H

6' SINGLE SWING GATE FOR PEDESTRIAN ACCESS ADD SIGN: GATE G

6' SINGLE SWING GATE FOR PEDESTRIAN ACCESS ADD SIGN: GATE F

15' CANTILEVER GATE SLIDES TO THE SOUTH ADD SIGN: GATE 4 (BASE BID MANUAL ALT BID POWERED)

6' SINGLE SWING GATE FOR PEDESTRIAN ACCESS ADD SIGN: GATE E

DEEPER SECTION IN RECENTLY INSTALLED CONCRETE FOR FENCE INSTALLATION COMPLETED BY OTHERS

6' SINGLE SWING GATE. PROPOSED PAVEMENT THICKNESS SHALL BE DETERMINED BY THE CONTRACTOR TO BASE PLATE MOUNT GATE. EXACT LOCATION TO BE DETERMINED IN THE FIELD (FENCE SHALL BE LOCATED ON THE AIRFIELD SIDE OF UTILITY METERS) ADD SIGN: GATE D

TO EXISTING GATE ADD SIGN: GATE 2

6' SINGLE SWING GATE FOR PEDESTRIAN ACCESS ADD SIGN: GATE B

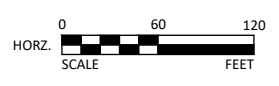
TO EXISTING PEDESTRIAN GATE ADD SIGN: GATE C

ALT BID PVC COATED CHAIN LINK

BASE BID CHAIN LINK

6' SINGLE SWING GATE FOR PEDESTRIAN ACCESS ADD SIGN: GATE A

© Bolton & Menk, Inc. 2024. All Rights Reserved. Ames, IA 50010. Terminal Area.dwg 6/24/2024 4:30:21 PM



1519 BALTIMORE DRIVE
AMES, IOWA 50010
Phone: (515) 233-6100
Email: Ames@bolton-menk.com
www.bolton-menk.com



DESIGNED	REV	DESCRIPTION	DATE
CDW			
DRAWN			
CDW			
CHECKED			
JPR			
CLIENT PROJ. NO.	075.132070		

AMES MUNICIPAL AIRPORT
WILDLIFE FENCING IMPROVEMENTS
PROPOSED FENCE

SHEET