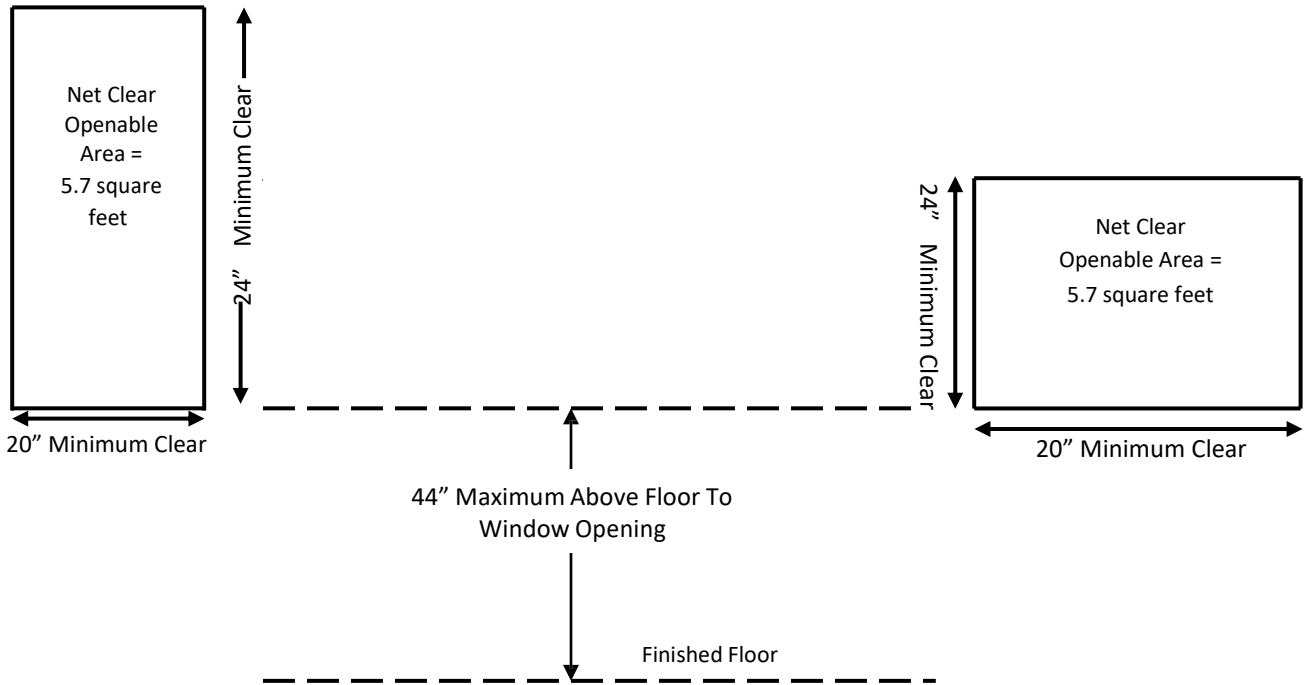


EMERGENCY ESCAPE AND RESCUE OPENINGS/EGRESS WINDOWS

Basements and every sleeping room shall have at least one operable emergency escape and rescue window or exterior door leading directly to a public street, public alley, yard or court.



Minimum Net Clear Opening Width/Height combinations that will provide the required 5.7 square feet clear opening for Emergency Escape & Rescue Openings (inches).

Width	20	20.5	21	21.5	22	22.5	23	23.5	24	24.5	25	25.5	26	26.5	27
Height	41	40	39.1	38.2	37.3	36.5	35.7	34.9	34.2	33.5	32.8	32.2	31.6	31	30.4

Width	27.5	28	28.5	29	29.5	30	30.5	31	31.5	32	32.5	33	33.5	34	34.2
Height	29.8	29.3	28.8	28.3	27.8	27.4	26.9	26.5	26.1	25.7	25.3	24.9	24.5	24.1	24

Emergency escape and rescue windows shall have a minimum net clear openable area of 5.7 square feet.

The minimum net clear opening width shall be 20 inches and the minimum net clear opening height shall be 24 inches. ** (Note: using both the minimum width and height dimensions will not provide the minimum required area)**.

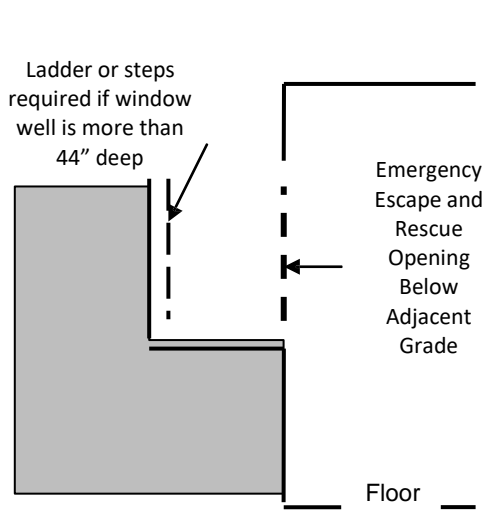
The net clear opening dimensions shall be obtained by the normal operation of the emergency escape and rescue opening from the inside. In order to obtain the prescribed opening dimensions, removal of sashes or other non-typical functions are not allowed.

The finished sill height (bottom of the window opening when in the open position) shall not be more than 44 inches above the finished floor.

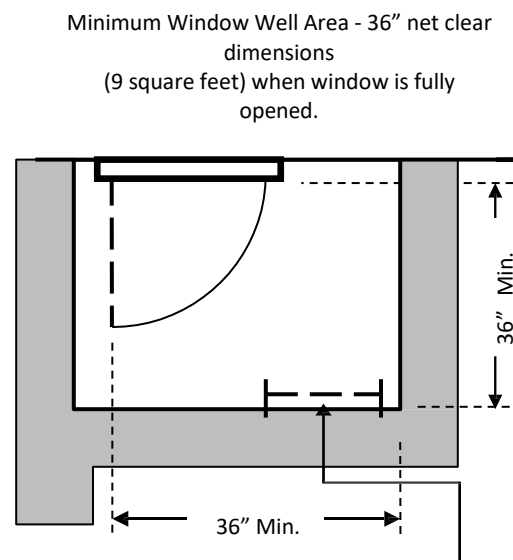
Window Wells

The minimum horizontal area of the window well shall be 9 square feet, with a minimum horizontal projection and width of 36 inches. The area of the window well shall allow the egress window to be fully opened.

Window wells with a vertical depth greater than 44 inches shall be equipped with a permanently affixed ladder or steps usable with the window in the fully open position. Ladders, rungs, or steps shall have an inside minimum width of 12 inches, shall project at least 3 inches from the wall, and shall be spaced not more than 18 inches on center vertically for the full height of the window well.



Section View of Window Well



Plan View of Window Well

Inspections Required

Rough-in inspection at the time that the window is set, but before it is covered on the inside.