

SYMBOL LEGEND

- EXISTING PROPERTY LINES
- - - - - EXISTING SANITARY SEWER
- - - - - EXISTING STORM SEWER
- █ █ █ █ █ SITE ACCESS ROUTES

NOTE:

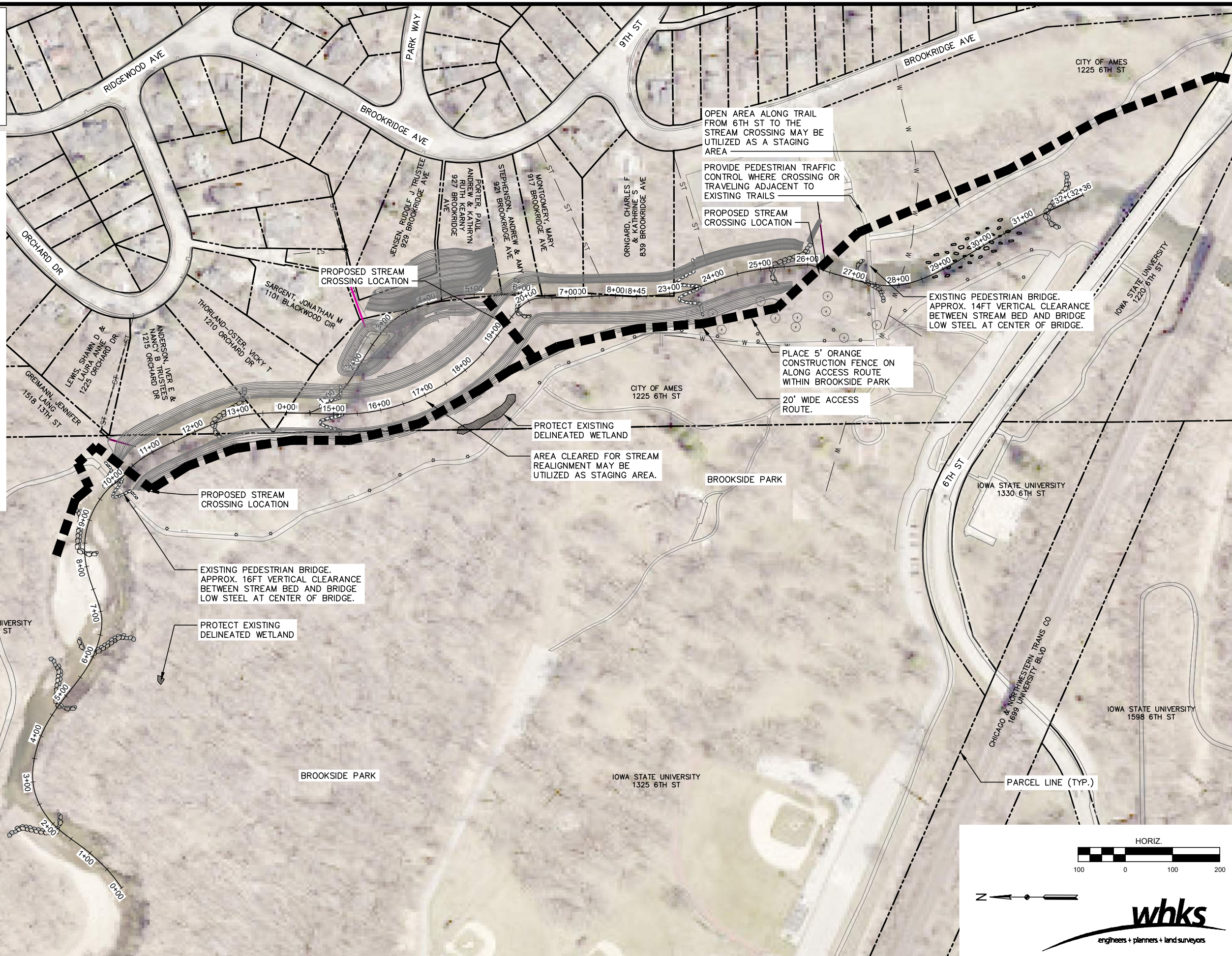
- PROTECT ALL UTILITIES, TREES, PAVEMENT, APPROACHES, DRIVES, TRAILS, BENCHES, POLES, LINES AND APPURTENANCES, ETC. NOT SHOWN FOR RELOCATION OR REMOVAL. REFER TO SHEETS D.05 - D.08 FOR AREAS AND ITEMS DESIGNATED FOR REMOVAL

CONTRACTOR IS TO CAUSE AS LITTLE DAMAGE AS POSSIBLE TO EXISTING WOODS AND PRIVATE PROPERTY. ONLY TREES WITHIN GRADING LIMITS AND OTHER DESIGNATED AREAS SHOWN ON THE PLANS SHALL BE CUT DOWN. CONTRACTOR TO PROTECT EXISTING TREES AND ROOTS OUTSIDE OF DESIGNATED AREAS. REFER TO SPECIFICATIONS, IF DAMAGE OCCURS TO TREES OUTSIDE THESE LIMITS.

WOODY MATERIAL MAY BE CHIPPED AND USED FOR CONSTRUCTION ACCESS STABILIZATION. CONTRACTOR SHALL RESTORE ALL ACCESS ROUTES TO EXISTING OR BETTER CONDITION. THIS INCLUDES BUT IS NOT LIMITED TO CONCRETE DRIVE APPROACHES, GRAVEL DRIVES, PAVED DRIVES, PEDESTRIAN TRAILS, ETC.

STAGING:

- CONSTRUCT PROJECT FROM NORTH AND SOUTH ENDS TOWARDS THE CENTER OF THE PROJECT. FINISH WITH CREEK REALIGNMENT AND OXBOW LAKE CONSTRUCTION.
- CONTRACTOR MAY PROPOSE STAGING PLAN. CONTRACTOR PROPOSED STAGING PLAN MUST HAVE PRIOR APPROVAL FROM THE ENGINEER AND THE CITY OF AMES.



FURMAN AQUATIC CENTER

IOWA STATE UNIVERSITY
1635 13TH ST

IOWA STATE UNIVERSITY
1325 6TH ST

BROOKSIDE PARK

IOWA STATE UNIVERSITY
1325 6TH ST

CHICAGO & NORTHWESTERN TRANS CO
1699 UNIVERSITY BLVD

IOWA STATE UNIVERSITY
1598 6TH ST

